

ESD-Safety shoes Static Control Sandal black ESD



Art. 1275



- ▶ Size 36-47
- ▶ CE, EN ISO 20345:2011, S1, SRA
- ▶ Leather with Air-Mesh textile inlays, black
- ▶ Breathable lining with Silver ions
- ▶ Instep area with lacing
- ▶ Double velcro fastening
- ▶ PU midsole
- ▶ Slip resistance special rubber outsole sole
- ▶ Composite toe cap
- ▶ Replaceable acc Wave insole (article no. 3553)
- ▶ ESD dissipative according to DIN EN 61340
- ▶ Reflective material
- ▶ Leather with scratch-resistant carbon coating
- ▶ Weight Size 42: 1570g



CLIMATE CLASS 1



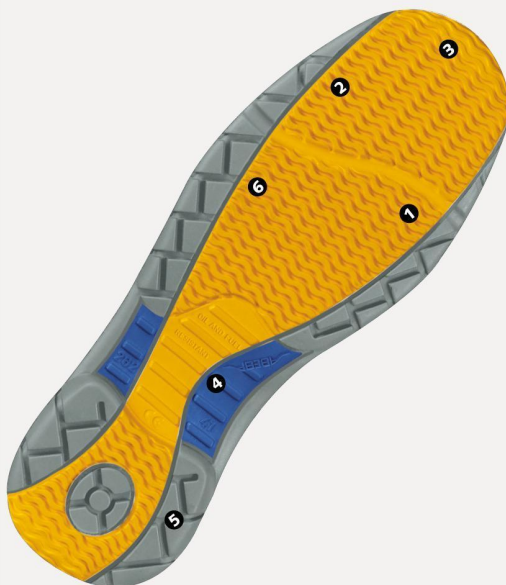
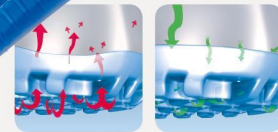
TECHNOLOGY

OUTSOLE

- 1_ESD dissipative according to DIN EN 61340
- 2_SRA slip resistance according to EN ISO 20345:2011
- 3_Rubber outsole, maximum grip
- 4_Torsions waist hard rubber compound
- 5_Ankle protection (high lateral stability)
- 6_Resistant to acid, base and fuel

acc Wave Einlegesohle
(air clima comfort)

3553
Size 36-47



Product qualification DIN EN 61340-5-1:	
test method	IEC 61340-5-1
limit values	$R \leq 10^8 \Omega$
average value	$R = 10^7 \Omega$