



## PRODUCT SPECIFICATION & TECHNICAL DATA

### FC88 - Thermal Aluminium Insole

**Collection:** Footwear Accessories

**Range:** Footwear

**Material Outsole:** Fleece, Latex

#### Product information

Designed to insulate your foot with a special aluminium layer to retain heat and repel cold and a wool/polyester layer for added warmth and comfort.

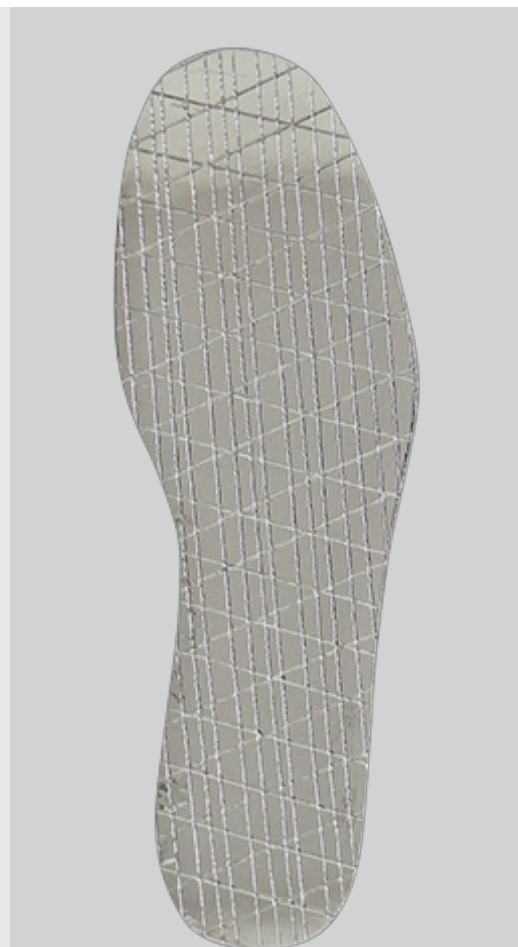
### Footwear Accessories

#### Footwear

Innovation, design, styling and quality components define the Portwest foot protection collection.

#### Features

- 5mm thickness
- Special aluminium layer retains heat and repels cold
- Wool/polyester layer for added warmth and comfort
- Trim to size for the perfect fit
- Retail bag which aids presentation for retail sales





## PRODUCT SPECIFICATION & TECHNICAL DATA

### FC88 - Thermal Aluminium Insole

**Commodity Code: 6406905090**

#### Test House

ITS Testing Services (UK) Ltd. (Intertek) (Notified Body No.: 0362)

Centre Court

LE19 1WD, UK

Cert No: LECFI00373767

#### Carton Dimensions/Weight

Item	Colour	Len	Wid	Hgt	Weight(Kg)	Cubic(m <sup>3</sup> )	EAN13	DUN14
FC88GRR	Grey	60.0	38.0	46.0	0.0460	0.1049	5036108198313	15036108684325