

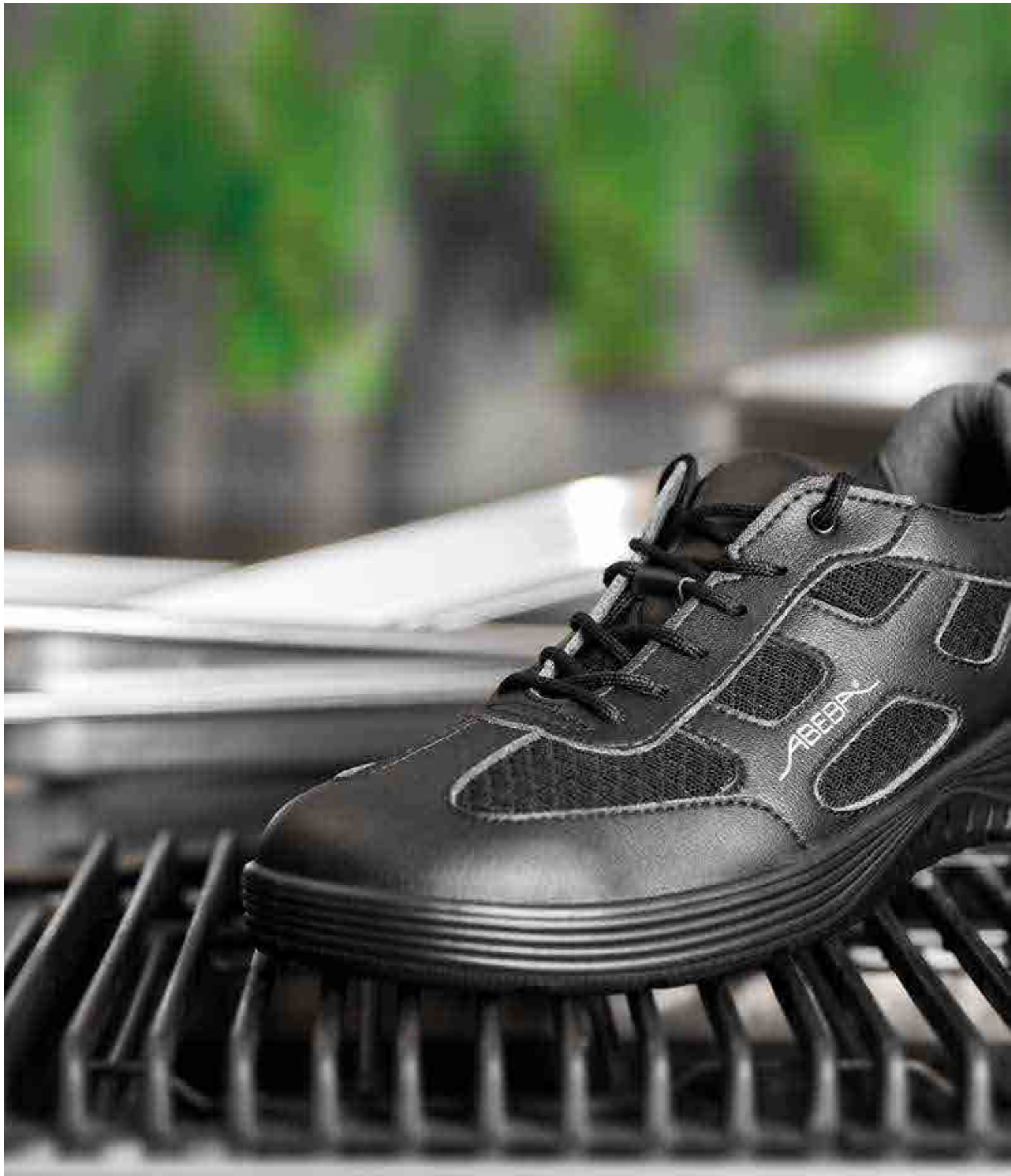
ABEBA®

OCCUPATIONAL SHOES

MADE FOR YOU



www.abeba.com





DEAR PARTNER,

the basis of a high quality shoe is the technology expertise and the know-how, but above all a passion for shoes!

Understanding and respect for people and their individual needs in their professional life are the driving engines behind Abeba's development of occupational and safety footwear.

This is the philosophy we follow and makes the difference in offering you the highest level of safety, a healthy environment for your feet and optimal comfort above and beyond the standard.

As we do not allow ourselves to compromise on quality, we have also set ourselves strict requirements for the choice of materials and their environmentally friendly treatment.

Today, Abeba is one of the largest and most modern shoe manufacturers in Europe, with customers in more than 30 countries worldwide.

Thanks to our logistics warehouse in Sankt Ingbert, our subsidiary Abeba France and our production sites in various European countries, we are able to fulfil your expectations under the best possible conditions.

Since the 1st of June 2007 we have been part of the Polish company Protektor S.A., which is listed on the Warsaw Stock Exchange.

ABEBA occupational and safety footwear is sold worldwide exclusively through a network of more than 2,000 PPE specialists or specialized distributors.

Together with our european sales team, we will be happy to answer your questions about ABEBA or its products and to develop suitable solutions together with you.

Thank you for your trust in our company.

Your  team



Imprint

Editor:
ABEBA Spezialschuh-Ausstatter GmbH
Schlackenbergstrasse 5
D-66386 St. Ingbert
Tel: +49 6894 3103-100
Fax: +49 6894 3074
E-Mail: abeba@abeba.de
www.abeba.com

Editorial Team:
ABEBA Marketing and Sales

Layout:
ABEBA Marketing and Sales

Photography:
Fandel Foto & Design

Our sales documents are also available in German and French.

We reserve the right to modify models, colours and technical details as well as the right to make a compensation or subsequent delivery. Printed on environmentally friendly paper.

CONTENT

GENERAL INFORMATION

- 006 ABEBA'S PROFESSIONAL WORLD
- 008 HACCP
- 010 ESD
- 012 CLIMATE CLASS 1
- 013 BETTER DAY-TO-DAY MOBILITY
- 114 STANDARDS/TECNOLOGY

PRODUCT RANGE

- 014 THE ORIGINAL
- 026 HIGH ORIGINAL
- 028 THE ORIGINAL PLUS
- 030 DYNAMIC FLOW
- 034 DYNAMIC
- 044 EASY
- 048 RUBBER
- 054 ARROW
- 060 NATURE
- 064 AIR CUSHION
- 068 X-LIGHT
- 076 UNI6
- 088 REFLEXOR
- 094 REFLEXOR COMFORT
- 098 SERVICE
- 100 MANAGER
- 102 BUSINESS LADY
- 104 BUSINESS MEN
- 106 CLEAN ROOM
- 108 AUTOCLABABLE

ACCESSORIES

- 112 INSOLES
- 113 SET OF SHOELACES

EXTRA

- 118 INDEX

ABEBA'S PROFESSIONAL WORLDS



MEDICIN

- High wearing comfort
- Suitable for orthopedic insoles
- SRC slip resistance
- Cushioning
- Breathable
- Good foot ventilation
- Protection against splash water



CATERING

- Optimal stability + grip
- Suitable for orthopedic insoles
- SRC slip resistance
- Cushioning
- Breathable
- Good foot ventilation
- HACCP



FOOD INDUSTRY

- Good foot ventilation
- Optimal stability + grip
- Suitable for orthopedic insoles
- SRC slip resistance
- High wearing comfort
- Replaceable insole
- HACCP



ESD PROTECTED AREA/ELECTRONICS

- Cushioning
- SRC slip resistance
- Suitable for orthopedic insoles
- High wearing comfort
- Climate class 1
- ESD dissipative according to DIN EN 61340



HYGIENE/CLEANING

- Suitable for orthopedic insoles
- High wearing comfort
- SRC slip resistance
- Water resistance
- Breathable
- Protection against splash water
- Cushioning
- Easy care



BAKERY

- High wearing comfort
- Good foot ventilation
- SRC slip resistance
- Cushioning
- Replaceable insole



SHELTERED WORKSHOP

- SRC slip resistance
- Suitable for orthopedic insoles
- Cushioning
- High wearing comfort
- Replaceable insole
- Optimal stability + grip
- Easy put on and off



Do you have any questions?

Then contact your regional manager. He will help you to select the shoes suitable to your activity.

We can also create an individual digital brochure for you.

HACCP





HACCP

HACCP (Hazard Analysis Critical Control Point) is a control system based on hazard analysis. It is a method for controlling the safety of food. This system is used to identify, assess and avoid significant hygiene risks due to food.

In the production, processing and packaging of foodstuffs, all possible sources which might cause health problem after ingestion must be eliminated.

All materials used in the production of ABEBA shoes are checked by us beforehand. Thanks to this high level of quality, we guarantee that our products are free of bacterial colonies. Ask our team or your specialist retailers for the right shoes for your needs.

Ask our staff or a specialized distributor to select the proper footwear according to your needs.

We are here to advise you.

You have come to the right place with ABEBA!

We're all set!

Most of our models have already been microbiologically tested by the Prüf- und Forschungsinstitut Pirmasens.

(Certification and Research Institute) and controlled by Baumgart (HACCP-compliant).

Please refer to all shoes marked with the „A-micro“ and „HACCP-compliant“ icon.



HACCP - HAZARD ANALYSIS CRITICAL CONTROL POINTS

1. Conduct a Hazard Analysis
2. Identify the Critical Control Points (CCPs)
3. Establish Critical Limits
4. Monitor CCPs
5. Establish Corrective Plan
6. Verification of the system
7. Record keeping



ESD

ELECTROSTATIC

DISCHARGE

Potential differences occur by friction or by contact and separation of two objects. A human body can be charged up to a voltage of 30,000 volts. An electrostatic discharge of less than 3000 volts will not be perceptible by the person involved. The majority of electronic components are sensitive to electrostatic discharges of only 5 to 30 volts and damage without any noticeable discharge.

An electrostatic discharge of a few tens of volts is enough to generate the explosion of certain solvents or chemicals. ESD protective measures are therefore essential to control the risks due to electrostatic charges.

This consists in particular of avoiding electrical charges and thus preventing sudden and dangerous discharges from the person to the sensitive component or the sensitive atmosphere (Atex Zones).

The most effective method of protection is the grounding of people by using ESD footwear in combination with a dissipative floor.



According to EN 61340-5-1 footwear is classified as ESD dissipative footwear if the electrical resistance in the system human body - footwear - ground is less than 35 MOhm (workplace testing).

The ESD qualification according to the 61340-4-3 standard is carried out in the laboratory according to climatic classes 1 (12% relative humidity), climatic class 2 (25% relative humidity) and climatic class 3 (50% relative humidity).

After the shoes are pre-conditioned according to climate class, they are filled with metal balls and placed on a metal plate.

The electrical resistance in the shoe-to-metal-plate system must not exceed 100 MOhm.

The electrical resistance of ESD footwear is strongly influenced by the climatic conditions (relative humidity and temperature) and by factors such as dirt, floor covering, or the transversal resistance of the person.

It is therefore recommended that the user performs regular electrical resistance tests under real conditions.

In critical areas, the resistance of the ground must be such that the protective function of the shoe is not neutralised. The „walking test“ allows an exact evaluation of the footwear-floor system.

WARNING: : ESD shoes are not suitable for electricians or while working on sources with any electric voltage.





DEFINITION

ESD - Electrostatic Discharge

Electrostatic discharge is caused by an imbalance of potential on charged objects or people by contact or close proximity.

ESDS

Electrostatic Discharge Sensitive Device

EPA

Electrostatic Protected Area

Area where sensitive devices can be handled directly with minimum risk of electrostatic damage.

Electrostatic charge

Is produced by frictional contact and separation of two materials.

Resistance to ground (R_g) EN 61340

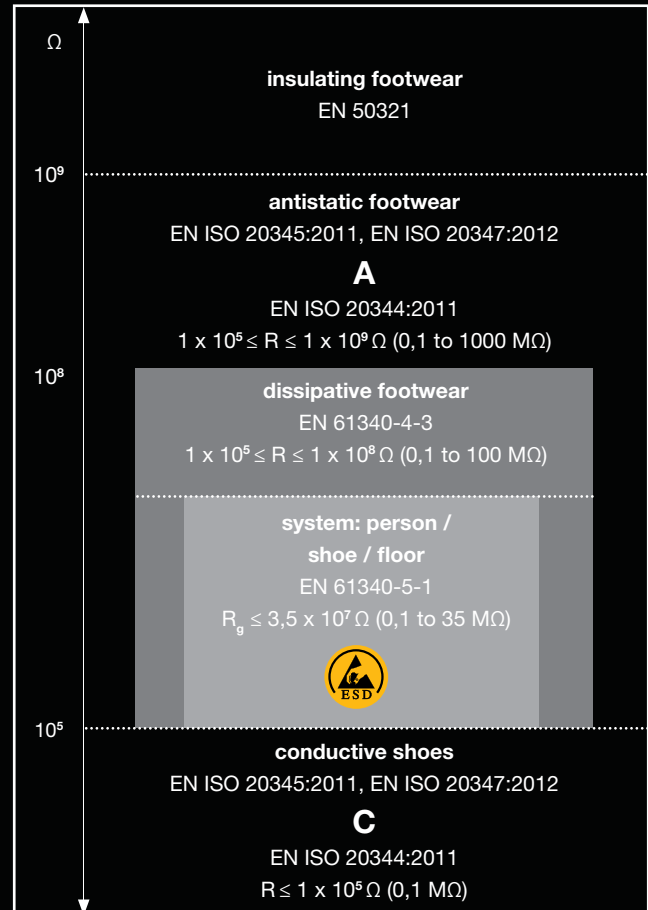
Is the resistance from a surface or an item within an EPA, measured with a suitable ohmmeter and test probe.

Latent damage

Is the damage caused by ESD to sensitive devices, which has the effect of reducing components reliability without causing immediate failure.

INFORMATION

Electrical resistance and protection against electrostatic phenomena. ESD-footwear as primary grounding in the system of person/ shoe/ floor



A and C: additional requirements of occupational- and safety shoes regarding electric property. R: electrical resistance. R_g: ground resistance.

For the daily function testing of the shoes the use of test stations has been established. There the resistance of person and shoe is measured. Attention should be paid to the separate measuring of the feet.

Electrical resistance

10 ³ Ohm =	0,001 MOhm =	1 kOhm
10 ⁴ Ohm =	0,01 MOhm =	10 kOhm
10 ⁵ Ohm =	0,1 MOhm =	100 kOhm
10 ⁶ Ohm =	1 MOhm =	1.000 kOhm
10 ⁷ Ohm =	10 MOhm	
10 ⁸ Ohm =	100 MOhm	
10 ⁹ Ohm =	1.000 MOhm =	1 GOhm
10 ¹⁰ Ohm =	10.000 MOhm =	10 GOhm
10 ¹¹ Ohm =	100.000 MOhm =	100 GOhm
10 ¹² Ohm =	1.000.000 MOhm =	1.000 GOhm



ESD SUSCEPTIBLE

The symbol has been used since 1984 and denotes components and subassemblies that are ESD susceptible.



ESD PROTECTIVE

The symbol was introduced in addition to symbol No. 1 in 1993 and denotes ESD protective products such as antistatic mats, trucks, clothing, protective covering, cartons, shoes, etc.

CLIMATE CLASS 1

CLIMATE CLASS I

All ABEBA ESD shoes are certified according to the European standard EN 61340-4-3 according to climatic class 1.

In general, the climate classes guarantee the electrostatic properties of the shoes. For their classification, the electrical measurements must be carried out under specific conditions, as shown in the following table.

Climate class	Pre-treatment	Conditioning	Measurement
1	96 (+10) h (40 +/- 3) °C RH < 15 %	96 (+10) h (23 +/- 2) °C (12 +/- 3) % RH	(23 +/- 2) °C (12 +/- 3) % RH
2		96 (+10) h (23 +/- 2) °C (25 +/- 3) % RH	(23 +/- 2) °C (25 +/- 3) % RH
3		48 (+ 5) h (23 +/- 2) °C (50 +/- 5) % RH	(23 +/- 2) °C (50 +/- 5) % RH

h = duration in hours, °C = temperature, % RH = relative humidity

The distinction between the various climate classes 1, 2 and 3 is mainly based on the relative humidity of the air in the environment during the control process. The relative humidity influences the electrostatic discharge capacity of the footwear during the test.

The certification test for climatic class 3 of the shoes is carried out in an environment with an air humidity of 50% and for climate class 2 a humidity of 25 %. For climatic class 1, the test must be passed with an air humidity of 12 %. All tests are performed at a temperature of 23°C.

Therefore, a shoe certified according to climate class 1 is the most suitable shoe to guarantee the electrostatic voltage dissipation capacity. The dissipation of electrostatic charges is guaranteed even in conditions of low air humidity and dry materials, thus avoiding sudden discharges.

However, all other environmental influences that may have an effect on electrostatic discharge, such as a more insulating floor or insulating deposits on outsoles, must also be taken into account.

Wearing footwear that is certified Climate Class 1 is highly recommended, not only in the chemical and electrical industries, when handling flammable liquids and gases, paints and varnishes, but also in classic sectors generating intense dust production, such as printing companies, mills and grain warehouses or forestry companies, where a static electricity discharge can generate an ignition or explosion.

Technical Rules for Operational Safety (TRBS 2153 & ISO 20023:2018)

Section 7.1 of TRBS 2153 requires the wearing of dissipative footwear with a contact resistance of less than 100 megohms in hazardous areas. Our shoes meet this requirement according to EN 61340-4-3 (test with metal balls in the shoe on a metal plate) and EN 61340-5-1 (test with a person in the shoe on a metal plate).

WALKING TEST

Practical experience has shown that merely testing the shoes' contact resistances will not ensure adequate employee protection from accumulating excessive charges. We would also recommend additionally the ESD qualification Walking test (as per EN 61340-4-5, limit < 100 V) for the shoe/Floor-system in the areas concerned.

The following aspects need to be considered with dissipative shoes:

- Effective person grounding is only possible in combination with conductive floors.
- Dirt in the outer sole or dust deposits can generate an insulating layer.
- External climatic conditions (e.g. low air humidity) can have a negative effect on contact resistance.
- Orthopaedic insoles and orthopaedic designs must not impair the footwear's discharge capacity.

BETTER DAY-TO-DAY MOBILITY

Abeba means better mobility in your daily life!

In the technological development of our shoes, we also integrate all our knowledge of safety and ergonomics. We know that a large part of our health rests on our feet.

That's why we're giving them our full attention. Not only do they have to carry us for a lifetime, but they provide us with important information that is transmitted in milliseconds to our control centre, the brain. 70,000 sensors detect how we stand and coordinate our walking.

In the development of our shoes, we integrate all this knowledge to make walking easier:

Information between the ground and the foot is gathered and transmitted through the shoe.

We have managed to optimize the different information elements of this chain:

- better foot support
- an ergonomic scroll
- an energy input at every step is the result of our new development

The inside of the shoe has also evolved thanks to the new insole technology.

We can achieve faster muscle reaction (Proprioception) through a 3-point system in the shoe, which has the effect of straightening the wearer's posture. This results in a better posture and easier walking.

Proprioception (from the Latin proprius „proper“ and recipere „that receives, made to receive“) describes the perception of the movement and position of the body in space or the position of different parts of the body in relation to each other.

As people sweat up to 240 millilitres of water through their feet in a day when walking, we have developed interchangeable (antibacterial) insoles.

It is also possible to wear individual orthopaedic insoles (also wedges), as the shoes are certified according to DGUV 112/191.

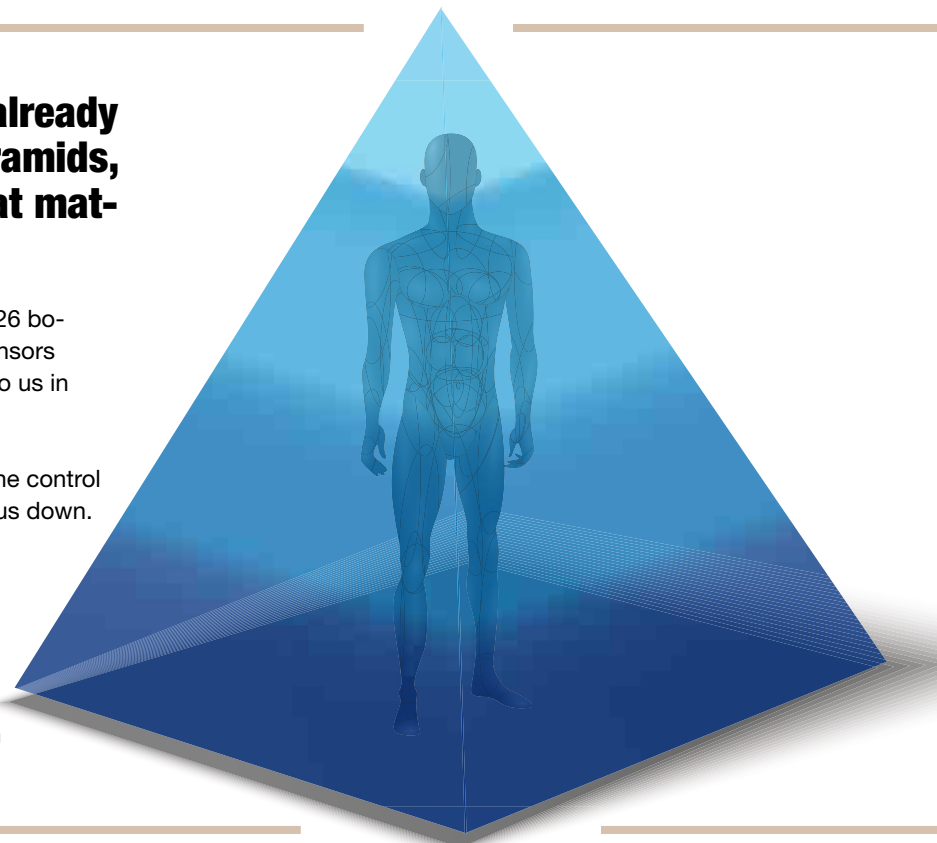
In ancient Egypt, it was already known, when building the pyramids, that it was the foundation that mattered!

Our foundation is our feet. They are made up of 26 bones, tendons, ligaments and muscles. 70,000 sensors are located at our feet and transmit information to us in milliseconds.

The conditions on the ground, the regulation in the control system - it works like a gyropod and doesn't let us down.

The strength of our company lies in the special attention it pays to the protection and health of the feet.

For the first time, the technology of lamella soles in the shoe allows a more direct interaction between the ground and the foot.



the ORIGINAL



THE ORIGINAL

A CONVINCING CLOG

SHOE STYLE

- _clog
- _ESD (partially)
- _FITTING - narrow-normal



OUTSOLE

- _SRC slip resistance according to EN ISO 20347:2012
- _Resistant to fuel
- _Cross & circle

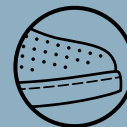
HIGHLIGHTS

- _Available from size 35 to 48 (according to models)
- _Microfibre heel / insole (partially)
- _Bestseller
- _multiple variants
- _light shoe



TECHNOLOGY

- _Antistatic/ESD dissipative according to EN 61340
- _CLIMATE CLASS 1 according to EN 61340-4-3
- _HEEL STRAP adjustable, foldable
- _HEEL STRAP fixed with adjustable fastening
- _PERFORATION for good ventilation





OB

A° micro

77023

OB



A° micro

377023

CE, EN ISO 20347:2012 OB, E, FO, SRC
Size 35-47 | microfibre white/blue | heel patch microfibre | heel strap foldable, adjustable | slip-resistant TPU outsole



OB

A° micro

77024

OB



A° micro

377024

CE, EN ISO 20347:2012 OB, E, FO, SRC
Size 35-43 | microfibre white/berry | heel patch microfibre | heel strap foldable, adjustable | slip-resistant TPU outsole



OB

A° micro

77022

OB



A° micro

377022

CE, EN ISO 20347:2012 OB, E, FO, SRC
Size 35-43 | microfibre white with pattern | heel patch microfibre | heel strap foldable, adjustable | slip-resistant TPU outsole



OB

A° micro

77032

OB



A° micro

377032

CE, EN ISO 20347:2012 OB, E, FO, SRC
Size 35-43 | microfibre white with pattern | heel patch microfibre | heel strap foldable, adjustable | slip-resistant TPU outsole





Also available in





OB

 micro

77021

CE, EN ISO 20347:2012 OB, E, FO, SRC
Size 35-47 | microfibre white | insole microfibre | heel strap foldable, adjustable | slip-resistant TPU outsole



OB

 micro

77031

CE, EN ISO 20347:2012 OB, E, FO, SRC
Size 35-47 | microfibre black | insole microfibre | heel strap foldable, adjustable | slip-resistant TPU outsole



**OB**
77030

CE, EN ISO 20347:2012 OB, E, FO, SRC

Size 35-47 | microfibre black, perforated | insole microfibre | heel strap foldable, adjustable | slip-resistant TPU outsole

**OB**
77020

CE, EN ISO 20347:2012 OB, E, FO, SRC

Size 35-47 | microfibre white, perforated | insole microfibre | heel strap foldable, adjustable | slip-resistant TPU outsole





OB

7021

CE, EN ISO 20347:2012 OB, FO, SRC
Size 35-48 | smooth leather white | insole leather | heel strap foldable, adjustable | slip-resistant outsole



OB

7031

CE, EN ISO 20347:2012 OB, FO, SRC
Size 35-48 | smooth leather black | insole leather | heel strap foldable, adjustable | slip-resistant outsole



OB

7030

CE, EN ISO 20347:2012 OB, FO, SRC
Size 35-48 | smooth leather black, perforated | insole leather | heel strap foldable, adjustable | slip-resistant outsole



OB

7020

CE, EN ISO 20347:2012 OB, FO, SRC
Size 35-48 | smooth leather white, perforated | insole leather | heel strap foldable, adjustable | slip-resistant outsole





OB

antistatic

5013

CE, EN ISO 20347:2012 OB, A, FO, SRC
Size 35-48 | smooth leather white | heel patch leather | heel strap foldable, adjustable | slip-resistant outsole



OB

antistatic

5081

CE, EN ISO 20347:2012 OB, A, FO, SRC
Size 35-43 | smooth leather white/mint | heel patch leather | heel strap foldable, adjustable | slip-resistant outsole



OB

7091

CE, EN ISO 20347:2012 OB, FO, SRC
Size 35-43 | smooth leather mint/white | insole leather | heel strap foldable, adjustable | slip-resistant outsole



OB

7081

CE, EN ISO 20347:2012 OB, FO, SRC
Size 35-43 | smooth leather blue/white | insole leather | heel strap foldable, adjustable | slip-resistant outsole

**OB****antistatic****5007**

CE, EN ISO 20347:2012 OB, A, FO, SRC
 Size 35-48 | smooth leather white, perforated | heel patch leather |
 heel strap foldable, adjustable | slip-resistant outsole

**OB****antistatic****5080**

CE, EN ISO 20347:2012 OB, A, FO, SRC
 Size 35-43 | smooth leather white/mint, perforated | heel patch
 leather | heel strap foldable, adjustable | slip-resistant outsole

**OB****7090**

CE, EN ISO 20347:2012 OB, FO, SRC
 Size 35-43 | smooth leather mint/white, perforated | insole leather |
 heel strap foldable, adjustable | slip-resistant outsole

**OB****7080**

CE, EN ISO 20347:2012 OB, FO, SRC
 Size 35-43 | smooth leather blue/white, perforated | insole leather |
 heel strap foldable, adjustable | slip-resistant outsole



OB antistatic **7201**

CE, EN ISO 20347:2012 OB, A, FO, SRC
Size 35-48 | smooth leather white/black with pattern | insole leather | heel strap foldable, adjustable | heel cushion | slip-resistant outsole



OB **7050**

CE, EN ISO 20347:2012 OB, FO, SRC
Size 35-48 | smooth leather white | insole leather | instep strap adjustable | slip-resistant outsole



OB antistatic **7209**

CE, EN ISO 20347:2012 OB, A, FO, SRC
Size 35-48 | smooth leather black | insole leather | heel strap non-foldable, removable | instep strap adjustable | lining extremely soft microfibre with silver ions | heel cushion | slip-resistant outsole



OB antistatic **7208**

CE, EN ISO 20347:2012 OB, A, FO, SRC
Size 35-48 | smooth leather white | insole leather | heel strap non-foldable, removable | instep strap adjustable | lining extremely soft microfibre with silver ions | heel cushion | slip-resistant outsole



high ORIGINAL



SHOE STYLE

- _clog
- _ESD
- _FITTING - narrow



HIGHLIGHTS

- _Upper in smooth leather
- _Leather heel patch

**OB****7009****OB****5009**

CE, EN ISO 20347:2012 OB, A, E, FO, SRC
 Size 36-42 | smooth leather black, perforated | heel patch leather |
 heel strap foldable, adjustable | wedge heel 45 mm | narrow fit |
 slip-resistant PU outsole

**OB****7008****OB****5008**

CE, EN ISO 20347:2012 OB, A, E, FO, SRC
 Size 36-42 | smooth leather white, perforated | heel patch leather |
 heel strap foldable, adjustable | wedge heel 45 mm | narrow fit |
 slip-resistant PU outsole

**OB****7002****OB****5004**

CE, EN ISO 20347:2012 OB, A, E, FO, SRC
 Size 36-42 | smooth leather white | heel patch leather | heel strap
 foldable, adjustable | wedge heel 45 mm | narrow fit | slip-resistant
 PU outsole

**OB****7001****OB****5001**

CE, EN ISO 20347:2012 OB, A, E, FO, SRC
 Size 36-42 | smooth leather white, perforated | heel patch leather |
 heel strap foldable, adjustable | wedge heel 45 mm | narrow fit |
 slip-resistant PU outsole

the ORIGINAL 



OUTSOLE

- SRC slip resistance according to EN ISO 20347:2012
- TPU sole abrasion resistant
- Resistant to fuel





SHOE STYLE

- clog
- ESD
- FITTING - narrow-normal



TECHNOLOGY

- Antistatic/ESD dissipative according to EN 61340
- CLIMATE CLASS 1 according to EN 61340-4-3
- PERFORATION for good ventilation 
- HEEL STRAP adjustable, foldable 

HIGHLIGHTS

- Available from size 36 to 42
- Upper material - A-micro
- Microfibre heel patch
- Washable at 30°C
- Light, low weight



OB

A°micro

7521

OB



A°micro

37521

CE, EN ISO 20347:2012 OB, A, E, FO, SRC
 Size 36-42 | microfibre white | heel patch microfibre | heel strap foldable, adjustable | slip-resistant TPU outsole



OB

A°micro

7531

OB



A°micro

37531

CE, EN ISO 20347:2012 OB, A, E, FO, SRC
 Size 36-42 | microfibre black | heel patch microfibre | heel strap foldable, adjustable | slip-resistant TPU outsole



OB

A°micro

7530

OB



A°micro

37530

CE, EN ISO 20347:2012 OB, A, E, FO, SRC
 Size 36-42 | microfibre black, perforated | heel patch microfibre | heel strap foldable, adjustable | slip-resistant TPU outsole



OB

A°micro

7520

OB



A°micro

37520

CE, EN ISO 20347:2012 OB, A, E, FO, SRC
 Size 36-42 | microfibre white, perforated | heel patch microfibre | heel strap foldable, adjustable | slip-resistant TPU outsole



DYNAMIC
flow



DYNAMIC FLOW

WEARING COMFORT ON A NEW LEVEL

SHOE STYLE

- **_Low shoe**
- **_ESD**
- **_FITTING - normal**



OUTSOLE

- **_SRC slip resistance**
according to EN ISO 20347:2012
- **_TPU sole abrasion resistant**
- **_Resistant to fuel**
- **_Flexing zones walking comfort**

TECHNOLOGY

- **_Antistatic/ESD dissipative**
according to EN 61340
- **_CLIMATE CLASS 1** according to
EN 61340-4-3



INSOLE

- **_replaceable Active
MediFit insole art. 352630**

More information on page 112

HIGHLIGHTS

- **_Available from size 35 to 48**
(according to the model)
- **_Suitable for orthopedic insoles**
- **_Easy put on and off (partially)**
- **_new series**
- **_new insole included**
- **_comfortable, light and breathable**

Our new first of cleanliness „MediFit“ is the result of a constant evolution in the development of our first of cleanliness. Our declared goal is to increase the health, well-being and comfort of the wearer with this insole!

When using this insole, the wearer is placed in the natural three-point position, which relieves the strain on the knees and back and allows the wearer to stand up straighter and more comfortably.



01



7370

01



37370

CE, EN ISO 20347:2012 O1, FO, SRC
Size 35-43 | microfibre white, perforated | lining with silver ions |
replaceable Active MediFit insole (art. 352630) | slip-resistant TPU
outsole



01

7374

01



37374

CE, EN ISO 20347:2012 O1, FO, SRC
Size 35-48 | knitted textile burgundy | stretch white fabric |
protection against splash water | double elastic band fastening
system | replaceable Active MediFit insole (art. 352630) |
slip-resistant TPU outsole





★★★
AVAILABLE
in the 4th quarter
2020
★



01

7376

01



37376

CE, EN ISO 20347:2012 O1, FO, SRC

Size 35-48 | knitted textile black | stretch white fabric | protection against splash water | double elastic band fastening system | replaceable Active MediFit insole (art. 352630) | slip-resistant TPU outsole



★★★
AVAILABLE
in the 4th quarter
2020
★



01

7375

01



37375

CE, EN ISO 20347:2012 O1, FO, SRC

Size 35-48 | knitted textile anthracite | stretch white fabric | protection against splash water | double elastic band fastening system | replaceable Active MediFit insole (art. 352630) | slip-resistant TPU outsole



DYNAMIC



DYNAMIC

ATHLETIC AND ACTIVE LIFESTYLE

SHOE STYLE

- **_clog**
- **_ESD**
- **_FITTING - narrow-normal**



OUTSOLE

- **_SRC slip resistance**
according to EN ISO 20347:2012
- **_TPU sole abrasion resistant**
- **_Resistant to fuel**
- **_Flexing zones walking comfort**

HIGHLIGHTS

- **_Available from size 35 to 48**
(according to the model)
- **_Suitable for orthopedic insoles**
- **_Replaceable insole with active cushioning over the whole area**
- **_available in many variants and colours**



INSOLE

- **_replaceable Active Comfort insole**
art. 352610

More information on page 112



TECHNOLOGY

- **_Antistatic/ESD dissipative** according to EN 61340
- **_CLIMATE CLASS 1** according to EN 61340-4-3

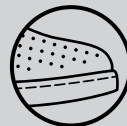
- **_HEEL STRAP**
adjustable, foldable



- **_HEEL STRAP**
fixed with adjustable fastening



- **_PERFORATION**
for good ventilation





OB

7310

OB



37310

CE, EN ISO 20347:2012 OB, A, E, FO, SRC
Size 35-48 | smooth leather white with pattern | heel strap foldable, adjustable | replaceable Active Comfort insole (art. 352610) | slip-resistant TPU outsole



OB

7313

OB



37313

CE, EN ISO 20347:2012 OB, A, E, FO, SRC
Size 35-48 | smooth leather white/red with pattern | heel strap foldable, adjustable | replaceable Active Comfort insole (art. 352610) | slip-resistant TPU outsole



OB

7312

OB



37312

CE, EN ISO 20347:2012 OB, A, E, FO, SRC
Size 35-48 | smooth leather white/blue with pattern | heel strap foldable, adjustable | replaceable Active Comfort insole (art. 352610) | slip-resistant TPU outsole



OB

7315

OB



37315

CE, EN ISO 20347:2012 OB, A, E, FO, SRC
Size 35-48 | smooth leather black/brown with pattern | heel strap foldable, adjustable | replaceable Active Comfort insole (art. 352610) | slip-resistant TPU outsole



**OB****7351****OB****37351**

CE, EN ISO 20347:2012 OB, A, E, FO, SRC

Size 35-48 | smooth leather white, perforated | heel strap foldable, adjustable | integrated footbed | slip-resistant TPU outsole

**DGUV**
112-191**OB**
 micro
7320**OB**
 micro
37320

CE, EN ISO 20347:2012 OB, A, E, FO, SRC

Size 35-43 | microfibre white with pattern | heel strap non-foldable, adjustable | replaceable Active Comfort insole (art. 352610) | slip-resistant TPU outsole

**DGUV**
112-191



OB

7329



37329

CE, EN ISO 20347:2012 OB, A, E, FO, SRC
Size 35-48 | knitted textile white | protection against splash water | heel strap non-foldable, adjustable | replaceable Active Comfort insole (art. 352610) | slip-resistant TPU outsole



OB

7328



37328

CE, EN ISO 20347:2012 OB, A, E, FO, SRC
Size 35-48 | knitted textile anthracite | protection against splash water | heel strap non-foldable, adjustable | replaceable Active Comfort insole (art. 352610) | slip-resistant TPU outsole



OB

7327



37327

CE, EN ISO 20347:2012 OB, A, E, FO, SRC
Size 35-48 | knitted textile burgundy | protection against splash water | heel strap non-foldable, adjustable | replaceable Active Comfort insole (art. 352610) | slip-resistant TPU outsole



OB

7326



37326

CE, EN ISO 20347:2012 OB, A, E, FO, SRC
Size 35-48 | knitted textile light blue | protection against splash water | heel strap non-foldable, adjustable | replaceable Active Comfort insole (art. 352610) | slip-resistant TPU outsole





OB

micro

7360

OB



micro

37360

CE, EN ISO 20347:2012 OB, A, E, FO, SRC
 Size 35-48 | microfibre white | heel strap non-foldable, adjustable |
 replaceable Active Comfort insole (art. 352610) | slip-resistant TPU
 outsole



OB

micro

7361

OB




micro



37361

CE, EN ISO 20347:2012 OB, A, E, FO, SRC
 Size 35-48 | microfibre black | heel strap non-foldable, adjustable |
 replaceable Active Comfort insole (art. 352610) | slip-resistant TPU
 outsole







OB  **7369**

OB   **37369**

CE, EN ISO 20347:2012 OB, A, E, FO, SRC
Size 35-48 | microfibre white/black | heel strap non-foldable, adjustable | replaceable Active Comfort insole (art. 352610) | slip-resistant TPU outsole






OB  **7367**

OB   **37367**

CE, EN ISO 20347:2012 OB, A, E, FO, SRC
Size 35-48 | microfibre white/blue | heel strap non-foldable, adjustable | replaceable Active Comfort insole (art. 352610) | slip-resistant TPU outsole



OB  **7368**

OB   **37368**

CE, EN ISO 20347:2012 OB, A, E, FO, SRC
Size 35-48 | microfibre white/red | heel strap non-foldable, adjustable | replaceable Active Comfort insole (art. 352610) | slip-resistant TPU outsole





OB



7365

OB



37365

CE, EN ISO 20347:2012 OB, A, E, FO, SRC - **DISCONTINUED**
 Size 35-48 | microfibre grey/black | heel strap non-foldable, adjustable | replaceable Active Comfort insole (art. 352610) | slip-resistant TPU outsole



OB



7362

OB



37362

CE, EN ISO 20347:2012 OB, A, E, FO, SRC - **DISCONTINUED**
 Size 35-48 | microfibre grey/blue | heel strap non-foldable, adjustable | replaceable Active Comfort insole (art. 352610) | slip-resistant TPU outsole



OB



7363

OB



37363

CE, EN ISO 20347:2012 OB, A, E, FO, SRC - **DISCONTINUED**
 Size 35-48 | microfibre grey/red | heel strap non-foldable, adjustable | replaceable Active Comfort insole (art. 352610) | slip-resistant TPU outsole



OB



7366

OB





37366

CE, EN ISO 20347:2012 OB, A, E, FO, SRC - **DISCONTINUED**
 Size 35-48 | microfibre grey/white | heel strap non-foldable, adjustable | replaceable Active Comfort insole (art. 352610) | slip-resistant TPU outsole








OB  micro **7335**

OB   micro **37335**

CE, EN ISO 20347:2012 OB, A, E, FO, SRC
Size 35-48 | microfibre white/black | seamless upper | heel strap non-foldable, adjustable | replaceable Active Comfort insole (art. 352610) | slip-resistant TPU outsole






OB  micro **7331**

OB   micro **37331**

CE, EN ISO 20347:2012 OB, A, E, FO, SRC
Size 35-48 | microfibre black/blue | seamless upper | heel strap non-foldable, adjustable | replaceable Active Comfort insole (art. 352610) | slip-resistant TPU outsole





OB  micro **7332**

OB   micro **37332**

CE, EN ISO 20347:2012 OB, A, E, FO, SRC
Size 35-48 | microfibre black/red | seamless upper | heel strap non-foldable, adjustable | replaceable Active Comfort insole (art. 352610) | slip-resistant TPU outsole



OB   micro **37333**

CE, EN ISO 20347:2012 OB, A, E, FO, SRC
Size 35-48 | microfibre black/gelb | seamless upper | heel strap non-foldable, adjustable | replaceable Active Comfort insole (art. 352610) | slip-resistant TPU outsole





OB

A[®]micro

7345

OB

A[®]micro

37345

CE, EN ISO 20347:2012 OB, A, E, FO, SRC
 Size 35-48 | microfibre white/black with **white breathable textile inlays** | heel strap non-foldable, adjustable | replaceable Active Comfort insole (art. 352610) | slip-resistant TPU outsole



OB

A[®]micro

7341

OB

A[®]micro

37341

CE, EN ISO 20347:2012 OB, A, E, FO, SRC
 Size 35-48 | microfibre black/blue with **black breathable textile inlays** | heel strap non-foldable, adjustable | replaceable Active Comfort insole (art. 352610) | slip-resistant TPU outsole



OB

A[®]micro

7342

OB

A[®]micro

37342

CE, EN ISO 20347:2012 OB, A, E, FO, SRC
 Size 35-48 | microfibre black/red with **black breathable textile inlays** | heel strap non-foldable, adjustable | replaceable Active Comfort insole (art. 352610) | slip-resistant TPU outsole



OB

A[®]micro

37343

OB

A[®]micro

CE, EN ISO 20347:2012 OB, A, E, FO, SRC
 Size 35-48 | microfibre black/yellow with **black breathable textile inlays** | heel strap non-foldable, adjustable | replaceable Active Comfort insole (art. 352610) | slip-resistant TPU outsole



easy



EASY

„FASHION FADES, ONLY STYLE REMAINS THE SAME.“
(COCO CHANEL)

SHOE STYLE

- _clog
- _ESD
- _FITTING - normal



OUTSOLE

- _SRC slip resistance according to EN ISO 20347:2012
- _TPU sole abrasion resistant
- _Resistant to fuel
- _Flexing zones walking comfort



HIGHLIGHTS

- _Available from size 35 to 48 (according to the model)
- _Suitable for orthopedic insoles
- _Replaceable insole with active cushioning over the whole area

INSOLE

- _replaceable Active Comfort insole art. 352710

More information on page 112



TECHNOLOGY

- _Antistatic/ESD dissipative according to EN 61340
- _CLIMATE CLASS 1 according to EN 61340-4-3

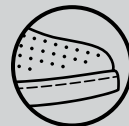
- _HEEL STRAP adjustable, foldable



- _HEEL STRAP fixed with adjustable fastening





- _PERFORATION for good ventilation







OB  **7620**

OB   **37620**

CE, EN ISO 20347:2012 OB, A, E, FO, SRC
 Size 35-43 | microfibre patent white | heel strap non-foldable, adjustable | replaceable Active Comfort insole (art. 352710) | slip-resistant TPU outsole



OB  **7621**

OB   **37621**

CE, EN ISO 20347:2012 OB, A, E, FO, SRC
 Size 35-43 | microfibre patent black | heel strap non-foldable, adjustable | replaceable Active Comfort insole (art. 352710) | slip-resistant TPU outsole



**OB****7631****OB****37631**

CE, EN ISO 20347:2012 OB, A, E, FO, SRC
 Size 35-48 | smooth leather black, perforated | heel strap foldable, adjustable | replaceable Active Comfort insole (art. 352710) | slip-resistant TPU outsole


DGUV
 112-191
**OB****7630****OB****37630**

CE, EN ISO 20347:2012 OB, A, E, FO, SRC
 Size 35-48 | smooth leather white, perforated | heel strap foldable, adjustable | replaceable Active Comfort insole (art. 352710) | slip-resistant TPU outsole


DGUV
 112-191
**OB****7622****OB****37622**

CE, EN ISO 20347:2012 OB, A, E, FO, SRC
 Size 35-48 | smooth leather white/blue | heel strap non-foldable, adjustable | replaceable Active Comfort insole (art. 352710) | slip-resistant TPU outsole


DGUV
 112-191
**OB****7623****OB****37623**

CE, EN ISO 20347:2012 OB, A, E, FO, SRC
 Size 35-43 | smooth leather white/red | heel strap non-foldable, adjustable | replaceable Active Comfort insole (art. 352710) | slip-resistant TPU outsole


DGUV
 112-191

rubber



RUBBER

THE CLOG WITH RUBBER SOLE

SHOE STYLE

- _clog
- _ESD
- _FITTING - normal



HIGHLIGHTS

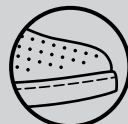
- _Available from size 36 to 47

OUTSOLE

- _SRC slip resistance according to EN ISO 20347:2012
- _Rubber sole abrasion resistant
- _Resistant to fuel
- _Cross/circle or Hexa4Grip profile

TECHNOLOGY

- _Antistatic/ESD dissipative according to EN 61340
- _CLIMATE CLASS 1 according to EN 61340-4-3
- _HEEL STRAP adjustable, foldable
- _HEEL STRAP fixed with adjustable fastening
- _PERFORATION for good ventilation





OB

9200

OB



5200

CE, EN ISO 20347:2012 OB, A, FO, SRC
Size 36-47 | smooth leather white | insole or heel patch leather | heel strap foldable, adjustable | slip-resistant special rubber outsole



OB

9252

CE, EN ISO 20347:2012 OB, A, FO, SRC
Size 36-47 | smooth leather black | insole leather | heel strap foldable, adjustable | slip-resistant special rubber outsole

OB

9250

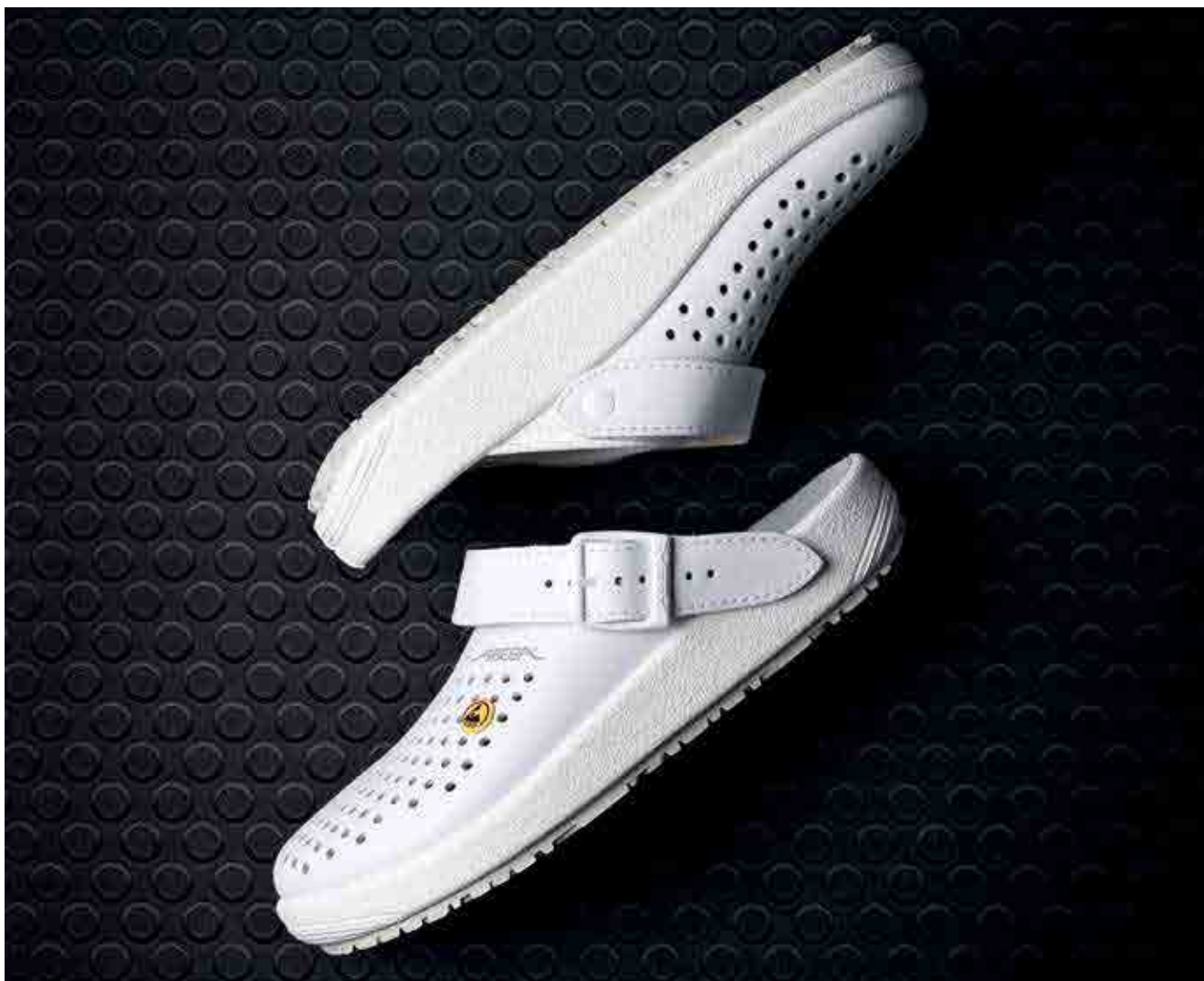
OB



5250

CE, EN ISO 20347:2012 OB, A, FO, SRC
Size 36-47 | smooth leather navy blue | insole or heel patch leather | heel strap foldable, adjustable | slip-resistant special rubber outsole





OB

9300

OB

9310

OB



5300

OB



5310

CE, EN ISO 20347:2012 OB, A, FO, SRC
 Size 36-47 | smooth leather white, perforated | insole or heel patch leather | heel strap foldable, adjustable | slip-resistant special rubber outsole

CE, EN ISO 20347:2012 OB, A, FO, SRC
 Size 36-47 | smooth leather black, perforated | insole or heel patch leather | heel strap foldable, adjustable | slip-resistant special rubber outsole



OB

9100

OB



5100

CE, EN ISO 20347:2012 OB, A, FO, SRC
Size 36-47 | smooth leather white | insole or heel patch leather | heel strap non-foldable, adjustable | instep strap adjustable | slip-resistant special rubber outsole



OB

9150

OB



5150

CE, EN ISO 20347:2012 OB, A, FO, SRC
Size 36-47 | smooth leather navy blue | insole or heel patch leather | heel strap non-foldable, adjustable | instep strap adjustable | slip-resistant special rubber outsole



OB

9110

CE, EN ISO 20347:2012 OB, A, FO, SRC
Size 36-47 | smooth leather black | insole leather | heel strap non-foldable, adjustable | instep strap adjustable | slip-resistant special rubber outsole





OB



970111

OB



3970111

CE, EN ISO 20347:2012 OB, A, FO, SRC
 Size 36-47 | microfibre white | insole microfibre | midsole TPU |
 heel strap non-foldable, adjustable | instep strap adjustable |
hexa4GRIP OUTSOLE



OB



970119

OB



3970119

CE, EN ISO 20347:2012 OB, A, FO, SRC
 Size 36-47 | microfibre black | insole microfibre | midsole TPU | heel
 strap non-foldable, adjustable | instep strap adjustable | **hexa4GRIP
 OUTSOLE**



Arrow



ARROW

A VINTAGE DESIGN ON A LIGHTWEIGHT SOLE

SHOE STYLE

- **_clog**
- **_ESD**
- **_FITTING - wide**



OUTSOLE

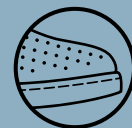
- **_SRA slip resistance**
according to EN ISO 20347:2012
- **_Double-layer PU-sole**
shock absorption, abrasion resistant
- or
- **_Lightweight Mono-PU-sole**
shock absorption, lightweight
- **_Resistant to fuel**

HIGHLIGHTS

- **_Available from size 36 to 51**
- **_Microfibre insole**
- **_Wellness**

TECHNOLOGY

- **_Antistatic/ESD dissipative** according to EN 61340
- **_CLIMATE CLASS 1** according to EN 61340-4-3
- **_HEEL STRAP**
adjustable, foldable
- **_HEEL STRAP**
fixed with adjustable fastening
- **_PERFORATION**
for good ventilation






OB	Size 36-47	8320
-----------	------------	-------------

OB	Size 48-51	8322
-----------	------------	-------------

OB	 Size 36-47	38320
-----------	--	--------------

OB	 Size 48-51	38322
-----------	--	--------------

CE, EN ISO 20347:2012 OB, A, FO, SRA
 microfibre white, perforated | insole microfibre | heel strap foldable,
 adjustable | lightweight Mono-PU-outsole



OB	Size 36-47	8330
-----------	------------	-------------

OB	Size 48-51	8332
-----------	------------	-------------

OB	 Size 36-47	38330
-----------	--	--------------

OB	 Size 48-51	38332
-----------	--	--------------

CE, EN ISO 20347:2012 OB, A, FO, SRA
 microfibre black, perforated | insole microfibre | heel strap foldable,
 adjustable | lightweight Mono-PU-outsole



**OB**

Size 36-47

8300**OB**

Size 48-51

8302**OB**

Size 36-47

38300**OB**

Size 48-51

38302

CE, EN ISO 20347:2012 OB, A, FO, SRA
microfibre white | insole microfibre | heel strap foldable, adjustable |
lightweight Mono-PU-outsole

**HACCP**
 micro
**OB**

Size 36-47

8310**OB**

Size 48-51

8312**OB**

Size 36-47

38310**OB**

Size 48-51

38312

CE, EN ISO 20347:2012 OB, A, FO, SRA
microfibre black | insole microfibre | heel strap foldable, adjustable |
lightweight Mono-PU-outsole

**HACCP**
 micro





OB Size 36-47 **8200**

OB Size 36-47 **8210**

OB Size 48-51 **8202**

OB Size 48-51 **8212**

OB  Size 36-47 **38200**

OB  Size 36-47 **38210**

OB  Size 48-51 **38202**

OB  Size 48-51 **38212**

CE, EN ISO 20347:2012 OB, A, FO, SRA
smooth leather white | insole microfibre | lining microfibre, breathable, moisture absorbing | heel strap foldable, adjustable | slip-resistant PU outsole

CE, EN ISO 20347:2012 OB, A, FO, SRA
smooth leather black | insole microfibre | lining microfibre, breathable, moisture absorbing | heel strap foldable, adjustable | slip-resistant PU outsole

OB  Size 36-47 **35600**

OB  Size 48-51 **35602**

CE, EN ISO 20347:2012 OB, A, FO, SRA
smooth leather white, perforated | insole microfibre | lining microfibre, breathable, moisture absorbing | heel strap foldable, adjustable | slip-resistant PU outsole



**OB**

Size 36-47

8600**OB**

Size 48-51

8602**OB**

Size 36-47

38600**OB**

Size 48-51

38602

CE, EN ISO 20347:2012 OB, A, FO, SRA
smooth leather white, perforated | insole microfibre | lining microfibre,
breathable, moisture absorbing | heel strap non-foldable, adjustable |
padded instep with elastic band | slip-resistant PU outsole

**OB****8400****OB****38400**

CE, EN ISO 20347:2012 OB, A, FO, SRA
Size 36-47 | smooth leather white | insole microfibre | lining micro-
fibre, breathable, moisture absorbing | heel strap non-foldable,
adjustable | instep strap adjustable | slip-resistant PU outsole



NATURE



NATURE

SANDALS AND CLOGS WITH CORK SOLE

SHOE STYLE

- **_clog**
- **_ESD**
- **_FITTING - normal**



OUTSOLE

- **_SRC slip resistance**
according to EN ISO 20347:2012
- **_Rubber sole abrasion resistant**
- **_Resistant to fuel**

HIGHLIGHTS

- **_Available from size 34 to 48**
(according to the model)
- **_Cork footbed, leather covered**
- **_Wellness**



TECHNOLOGY

- **_Antistatic/ESD dissipative** according to EN 61340
- **_CLIMATE CLASS 1** according to EN 61340-4-3
- **_HEEL STRAP**
fixed with adjustable fastening
- **_PERFORATION**
for good ventilation



CORK FOOTBED

- **_Skin-friendly**
- **_Moisture absorbing**
- **_Toe grip**
- **_Shock absorbing**



OB

8040

OB



4040

CE, EN ISO 20347:2012 OB, A, FO, SRC
Size 34-48 | smooth leather white | heel strap non-foldable, adjustable | instep strap adjustable | buckle fastening | slip-resistant special rubber outsole



OB

8045

OB



4055

CE, EN ISO 20347:2012 OB, A, FO, SRC
Size 34-48 | smooth leather black | heel strap non-foldable, adjustable | instep strap adjustable | buckle fastening | slip-resistant special rubber outsole



OB



4045

CE, EN ISO 20347:2012 OB, A, FO, SRC
Size 34-48 | smooth leather dark blue, perforated | heel strap non-foldable, adjustable | instep strap adjustable | buckle fastening | slip-resistant special rubber outsole



OB



4050

CE, EN ISO 20347:2012 OB, A, FO, SRC
Size 34-48 | smooth leather white, perforated | heel strap non-foldable, adjustable | instep strap adjustable | buckle fastening | slip-resistant special rubber outsole

**OB****4085**

CE, EN ISO 20347:2012 OB, A, FO, SRC
 Size 34-48 | smooth leather black | 2 instep straps, adjustable |
 velcro fastening | slip-resistant special rubber outsole

**OB****4080**

CE, EN ISO 20347:2012 OB, A, FO, SRC
 Size 34-48 | smooth leather white | 2 instep straps, adjustable |
 velcro fastening | slip-resistant special rubber outsole

**OB****4090**

CE, EN ISO 20347:2012 OB, A, FO, SRC
 Size 34-48 | smooth leather white | heel strap non-foldable, adjustable |
 2 instep straps, adjustable | velcro fastening | slip-resistant
 special rubber outsole

**OB****4096**

CE, EN ISO 20347:2012 OB, A, FO, SRC
 Size 34-48 | velour blue | heel strap non-foldable, adjustable |
 2 instep straps, adjustable | buckle fastening | slip-resistant special
 rubber outsole

**OB****4086**

CE, EN ISO 20347:2012 OB, A, FO, SRC
 Size 34-48 | velour blue | 2 instep straps, adjustable | buckle fas-
 tening | slip-resistant special rubber outsole

air
cushion



AIR CUSHION

TRENDY RETRO STYLE ON AN EXTREM LIGHT SOLE

SHOE STYLE

- **_Low shoe**
- **_ESD**
- **_FITTING - narrow-normal**



OUTSOLE

- **_SRA slip resistance**
according to EN ISO 20347:2012
- **_Air cushion PU-sole**
shock absorption
- **_Extrem light sole**



HIGHLIGHTS

- **_Available from size 35 to 47**
- **_Lining microfibre, breathable, moisture absorbing**
- **_Extremely light**

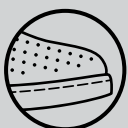
INSOLE

- **_replaceable insole art. 3551**
- More information on page 112



TECHNOLOGY

- **_Antistatic/ESD dissipative** according to EN 61340
- **_CLIMATE CLASS 1** according to EN 61340-4-3
- **_PERFORATION**
for good ventilation





32300

CE, EN ISO 20347:2012 O1, SRA
Size 35-47 | grained leather white, perforated | lining microfibre, breathable, moisture absorbing | replaceable insole (art. 3551) | slip-resistant PU outsole



32310

CE, EN ISO 20347:2012 O1, SRA
Size 39-47 | grained leather black, perforated | lining microfibre, breathable, moisture absorbing | replaceable insole (art. 3551) | slip-resistant PU outsole



2710



32710

CE, EN ISO 20347:2012 O2, SRA
Size 39-47 | grained leather black | lining microfibre, breathable, moisture absorbing | replaceable insole (art. 3551) | slip-resistant PU outsole

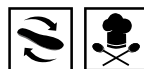


2700



32700

CE, EN ISO 20347:2012 O2, SRA
Size 39-47 | grained leather white | lining microfibre, breathable, moisture absorbing | replaceable insole (art. 3551) | slip-resistant PU outsole





01

A[®]micro

2370

01



A[®]micro

32370

CE, EN ISO 20347:2012 O1, SRA
 Size 35-47 | microfibre white | instep area with elastic band |
 integrated footbed | decontaminable | slip-resistant PU outsole



02

2650

02



32650

CE, EN ISO 20347:2012 O2, SRA
 Size 35-47 | grained leather black | lining with silver ions | replace-
 able insole (art. 3551) | slip-resistant PU outsole



02

2610

02



32610

CE, EN ISO 20347:2012 O2, SRA
 Size 35-47 | grained leather black | lining microfibre, breathable,
 moisture absorbing | replaceable insole (art. 3551) | slip-resistant
 PU outsole



02

2600

02



32600

CE, EN ISO 20347:2012 O2, SRA
 Size 35-47 | grained leather white | lining microfibre, breathable,
 moisture absorbing | replaceable insole (art. 3551) | slip-resistant
 PU outsole



x-light



X-LIGHT

EVOLUTION INSTEAD OF REVOLUTION

SHOE STYLE

- _clog and low shoe
- _ESD
- _FITTING - wide



OUTSOLE

- _SRC slip resistance according to EN ISO 20347:2012
- _PU sole lighter, more stable and abrasion resistant
- _Resistant to fuel
- _cushioning effect optimised



HIGHLIGHTS

- _Available from size 35 to 48
- _Suitable for orthopedic insoles
- _Suitable for heel and foot lift
- _Fitting optimised
- _Responsive cushioning

INSOLE

- _replaceable Active Comfort insole
art. 351610, closed
art. 351710 open

More information on page 112



NEW

TECHNOLOGY

- _Antistatic/ESD dissipative according to EN 61340
- _CLIMATE CLASS 1 according to EN 61340-4-3

- _HEEL STRAP
adjustable, foldable



- _HEEL STRAP
fixed with adjustable fastening



Set of shoelaces

- _Set of 3 colours (red, blue and green),
length 80 cm for low shoes,
suitable for all low lace-up shoes
art. 370118



More information on page 113



OB

711141

OB



7131141

CE, EN ISO 20347:2012 OB, A, E, FO, SRC
Size 35-48 | smooth leather white | lining with silver ions | heel strap foldable, adjustable | instep area with elastic band | replaceable Active Comfort insole (art. 351710) | slip-resistant PU outsole



OB

711142

OB



7131142

CE, EN ISO 20347:2012 OB, A, E, FO, SRC
Size 35-48 | smooth leather black | lining with silver ions | heel strap foldable, adjustable | instep area with elastic band | replaceable Active Comfort insole (art. 351710) | slip-resistant PU outsole



OB

711135

OB



7131135

CE, EN ISO 20347:2012 OB, A, E, FO, SRC
Size 35-48 | smooth leather black | lining with silver ions | heel strap non-foldable, adjustable | instep area with elastic band | replaceable Active Comfort insole (art. 351710) | slip-resistant PU outsole



OB

711130

OB



7131130

CE, EN ISO 20347:2012 OB, A, E, FO, SRC
Size 35-48 | smooth leather white | lining with silver ions | heel strap non-foldable, adjustable | instep area with elastic band | replaceable Active Comfort insole (art. 351710) | slip-resistant PU outsole





01

711131

01



7131131

CE, EN ISO 20347:2012 O1, FO, SRC
 Size 35-48 | smooth leather white **with grey breathable textile inlays** | lining with silver ions | double velcro fastening | replaceable Active Comfort insole (art. 351610) | slip-resistant PU outsole



01

711136

01



7131136

CE, EN ISO 20347:2012 O1, FO, SRC
 Size 35-48 | smooth leather black **with grey breathable textile inlays** | lining with silver ions | double velcro fastening | replaceable Active Comfort insole (art. 351610) | slip-resistant PU outsole



02

A^{micro}

711129

02



A^{micro}

7131129

CE, EN ISO 20347:2012 O2, FO, SRC
 Size 35-48 | microfibre black | lining with silver ions | instep area with elastic band | replaceable Active Comfort insole (art. 351610) | slip-resistant PU outsole



02

A^{micro}

711128

02



A^{micro}

7131128

CE, EN ISO 20347:2012 O2, FO, SRC
 Size 35-48 | microfibre white | lining with silver ions | instep area with elastic band | replaceable Active Comfort insole (art. 351610) | slip-resistant PU outsole





X-LIGHT



02



711124

02



7131124

CE, EN ISO 20347:2012 O2, FO, SRC
Size 35-48 | microfibre-textile white | water-repellent | lining with silver ions | replaceable Active Comfort insole (art. 351610) | slip-resistant PU outsole



DGUV
112-191



02

711137

02



7131137

CE, EN ISO 20347:2012 O2, FO, SRC
Size 35-48 | smooth leather black | lining with silver ions | instep area with elastic band | replaceable Active Comfort insole (art. 351610) | slip-resistant PU outsole



DGUV
112-191



02

711132

02



7131132

CE, EN ISO 20347:2012 O2, FO, SRC
Size 35-48 | smooth leather white | lining with silver ions | instep area with elastic band | replaceable Active Comfort insole (art. 351610) | slip-resistant PU outsole



DGUV
112-191



01



7131158

CE, EN ISO 20347:2012 O1, FO, SRC*
 Size 35-48 | smooth leather white with **breathable textile inlays** | lining with silver ions | replaceable Active Comfort insole (art. 351610) | slip-resistant PU outsole



01



7131156

CE, EN ISO 20347:2012 O1, FO, SRC*
 Size 35-48 | smooth leather black with **breathable textile inlays** | lining with silver ions | replaceable Active Comfort insole (art. 351610) | slip-resistant PU outsole



02



711146

CE, EN ISO 20347:2012 O2, FO, SRC*
 Size 35-48 | microfibre black | lining with silver ions | double velcro fastening | replaceable Active Comfort insole (art. 351610) | scuff resistant overcap | slip-resistant PU outsole



02



711147

CE, EN ISO 20347:2012 O2, FO, SRC*
 Size 35-48 | microfibre white | lining with silver ions | double velcro fastening | replaceable Active Comfort insole (art. 351610) | scuff resistant overcap | slip-resistant PU outsole





01

711150

01



7131150

CE, EN ISO 20347:2012 O1, FO, SRC
Size 35-48 | velours microfibre black/neon orange | replaceable Active Comfort insole (art. 351610) | slip-resistant PU outsole



02

711160

02



7131160

CE, EN ISO 20347:2012 O2, FO, SRC
Size 35-48 | Cordura black/neon yellow | replaceable Active Comfort insole (art. 351610) | slip-resistant PU outsole



02

A^{micro}

711101

02



A^{micro}

7131101

CE, EN ISO 20347:2012 O2, FO, SRC
Size 35-48 | microfibre black | lining microfibre, breathable, moisture absorbing | replaceable Active Comfort insole (art. 351610) | slip-resistant PU outsole



02

A^{micro}

711100

02



A^{micro}

7131100

CE, EN ISO 20347:2012 O2, FO, SRC
Size 35-48 | microfibre/ textile black | lining microfibre, breathable, moisture absorbing | replaceable Active Comfort insole (art. 351610) | slip-resistant PU outsole





02

A[®]micro

711126

02



A[®]micro

7131126

CE, EN ISO 20347:2012 O2, FO, SRC
 Size 35-48 | microfibre white | lining with silver ions | replaceable Active Comfort insole (art. 351610) | slip-resistant PU outsole



02

A[®]micro

711127

02



A[®]micro

7131127

CE, EN ISO 20347:2012 O2, FO, SRC
 Size 35-48 | microfibre black | lining with silver ions | replaceable Active Comfort insole (art. 351610) | slip-resistant PU outsole



02

711138

02



7131138

CE, EN ISO 20347:2012 O2, FO, SRC
 Size 35-48 | smooth leather black | lining with silver ions | reflective stripes | replaceable Active Comfort insole (art. 351610) | slip-resistant PU outsole



02

711133

02



7131133

CE, EN ISO 20347:2012 O2, FO, SRC
 Size 35-48 | smooth leather white | lining with silver ions | reflective stripes | replaceable Active Comfort insole (art. 351610) | slip-resistant PU outsole



uni6



UNI6

EXPERIENCE THE FUTURE

SHOE STYLE

- _ Low shoe
- _ ESD
- _ Fit - normal



OUTSOLE

- _ SRC slip resistance according to EN ISO 20347:2012
- _ TPU sole, abrasion resistant
- _ Resistant to fuel
- _ Flexing zones walking comfort



TECHNOLOGY

- _ Antistatic/ESD dissipative according to EN 61340
- _ CLIMATE CLASS 1 according to EN 61340-4-3

INSOLE

- _ replaceable Active Comfort insole art. 352510

More information on page 112



HIGHLIGHTS

- _ Available from size 35 to 48 (according to the model)
- _ Special lining, breathable, moisture absorbing
- _ Soft PU midsole
- _ Suitable for orthopedic insoles
- _ cool, classic sneaker look

Set of shoelaces

- _ Set in 3 colours (red, blue and green), length 80 cm for low shoes, suitable for all low lace-up shoes art. 370118



More information on page 113



UNIG



02

6774

02



36774

CE, EN ISO 20347:2012 O2, FO, SRC
Size 35-48 | knitted textile orange | protection against splash water | lining with silver ions | replaceable Active Comfort insole (art. 352510) | slip-resistant TPU outsole | **incl. blue laces**



02

6775

02



36775

CE, EN ISO 20347:2012 O2, FO, SRC
Size 35-48 | knitted textile anthracite | protection against splash water | lining with silver ions | replaceable Active Comfort insole (art. 352510) | slip-resistant TPU outsole



02

6773

02



36773

CE, EN ISO 20347:2012 O2, FO, SRC
Size 35-48 | knitted textile blue | protection against splash water | lining with silver ions | replaceable Active Comfort insole (art. 352510) | slip-resistant TPU outsole





02

6772

02



36772

CE, EN ISO 20347:2012 O2, FO, SRC
 Size 35-48 | knitted textile white | protection against splash water |
 lining with silver ions | replaceable Active Comfort insole (art.
 352510) | slip-resistant TPU outsole



02

6776

02



36776

CE, EN ISO 20347:2012 O2, FO, SRC
 Size 35-48 | knitted textile black | protection against splash water |
 lining microfibre, breathable, moisture absorbing | replaceable Active
 Comfort insole (art. 352510) | slip-resistant TPU outsole



02

6729

02



36729

CE, EN ISO 20347:2012 O2, FO, SRC
 Size 35-48 | microfibre-textile white with pattern | water-repellent |
 lining with silver ions | replaceable Active Comfort insole (art.
 352510) | slip-resistant TPU outsole



02

6728

02



36728

CE, EN ISO 20347:2012 O2, FO, SRC
 Size 35-48 | microfibre-textile black with pattern | water-repellent |
 lining with silver ions | replaceable Active Comfort insole (art.
 352510) | slip-resistant TPU outsole





UNIG



01

6724



36724

CE, EN ISO 20347:2012 O1, FO, SRC
Size 35-43 | textile Paisley | water-repellent | lining with silver ions |
replaceable Active Comfort insole (art. 352510) | slip-resistant TPU
outsole



02

micro

6766




micro



36766

CE, EN ISO 20347:2012 O2, FO, SRC
Size 35-43 | microfibre white with coloured lacing | lining with
silver ions | replaceable Active Comfort insole (art. 352510) |
slip-resistant TPU outsole | **incl. white exchange laces**








01  **6795**

01   **36795**

CE, EN ISO 20347:2012 O1, FO, SRC
 Size 35-48 | microfibre white | lining microfibre, breathable, moisture absorbing | instep area with velcro fastening | replaceable Active Comfort insole (art. 352510) | slip-resistant TPU outsole






01  **6796**

01   **36796**

CE, EN ISO 20347:2012 O1, FO, SRC
 Size 35-48 | microfibre black | lining microfibre, breathable, moisture absorbing | instep area with velcro fastening | replaceable Active Comfort insole (art. 352510) | slip-resistant TPU outsole





02  **6741**

02   **36741**

CE, EN ISO 20347:2012 O2, FO, SRC
 Size 35-48 | microfibre black | lining with silver ions | instep area with elastic band | replaceable Active Comfort insole (art. 352510) | slip-resistant TPU outsole



02  **6740**

02   **36740**

CE, EN ISO 20347:2012 O2, FO, SRC
 Size 35-48 | microfibre white | lining with silver ions | instep area with elastic band | replaceable Active Comfort insole (art. 352510) | slip-resistant TPU outsole





01

6760

01



36760

CE, EN ISO 20347:2012 O1, FO, SRC
Size 35-48 | functional leather white with honeycomb pattern | water-repellent | scratch-resistant | lining with silver ions | replaceable Active Comfort insole (art. 352510) | slip-resistant TPU outsole



02

6761

02



36761

CE, EN ISO 20347:2012 O2, FO, SRC
Size 35-48 | functional leather black with honeycomb pattern | water-repellent | scratch-resistant | lining with silver ions | replaceable Active Comfort insole (art. 352510) | slip-resistant TPU outsole





01

6762

01

**36762**

CE, EN ISO 20347:2012 O1, FO, SRC

Size 35-48 | functional leather blue with honeycomb pattern | water-repellent | scratch-resistant | lining with silver ions | replaceable Active Comfort insole (art. 352510) | slip-resistant TPU outsole


DGV
112-191


01

6763

01


**36763**



CE, EN ISO 20347:2012 O1, FO, SRC

Size 35-48 | functional leather navy blue | water-repellent | scratch-resistant | lining with silver ions | replaceable Active Comfort insole (art. 352510) | slip-resistant TPU outsole


DGV
112-191






02  **6780**

02   **36780**

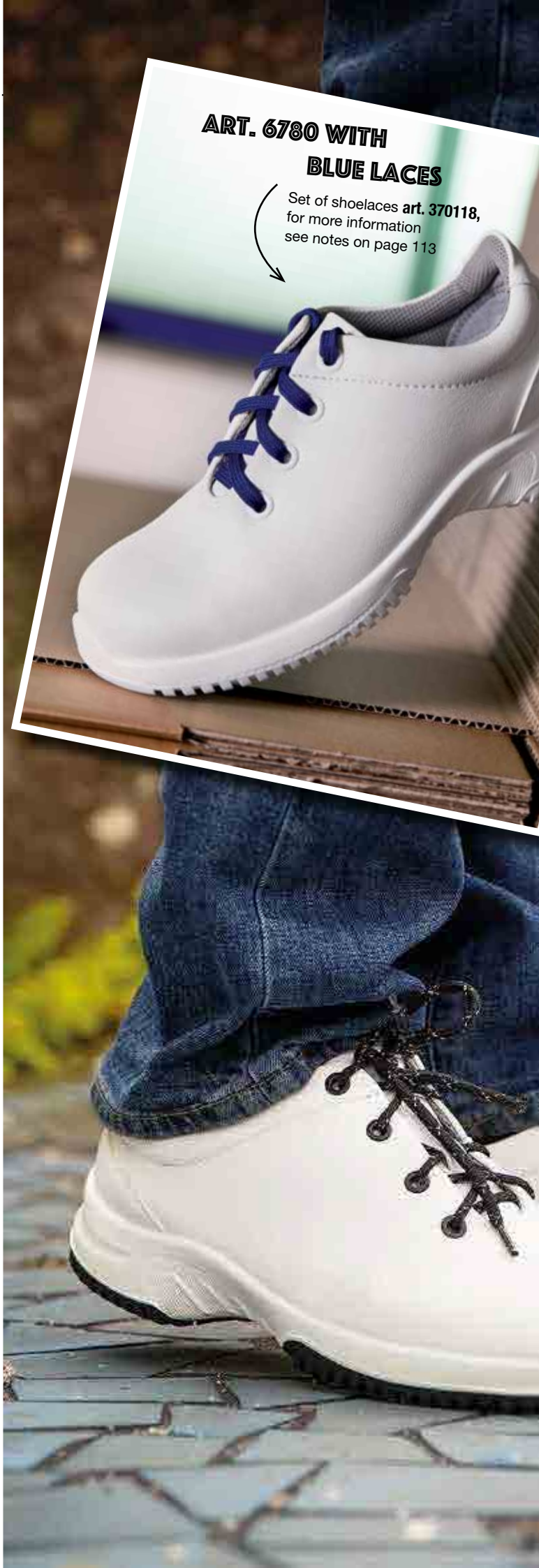
CE, EN ISO 20347:2012 O2, FO, SRC
Size 35-48 | microfibre white | lining with silver ions |
replaceable Active Comfort insole (art. 352510) | slip-resistant TPU
outsole



02  **6781**

02   **36781**

CE, EN ISO 20347:2012 O2, FO, SRC
Size 35-48 | microfibre black | lining with silver ions | replaceable
Active Comfort insole (art. 352510) | slip-resistant TPU outsole



**ART. 6780 WITH
BLUE LACES**

Set of shoelaces art. 370118,
for more information
see notes on page 113



02

 A micro
6786

02


 A micro
36786

CE, EN ISO 20347:2012 O2, FO, SRC
 Size 35-48 | microfibre white/blue | lining with silver ions |
 replaceable Active Comfort insole (art. 352510) | slip-resistant TPU
 outsole



02

 A micro
6787

02


 A micro
36787

CE, EN ISO 20347:2012 O2, FO, SRC
 Size 35-48 | microfibre white/black | lining with silver ions |
 replaceable Active Comfort insole (art. 352510) | slip-resistant
 TPU outsole





01

6721



36721

CE, EN ISO 20347:2012 O1, FO, SRC
 Size 35-48 | velour black with **breathable textile inlays** | lining with silver ions | replaceable Active Comfort insole (art. 352510) | slip-resistant TPU outsole



01

6731



36731

CE, EN ISO 20347:2012 O1, FO, SRC
 Size 35-48 | smooth leather black, **microperforated** | lining with silver ions | replaceable Active Comfort insole (art. 352510) | slip-resistant TPU outsole





02

6771

02



36771

CE, EN ISO 20347:2012 O2, FO, SRC
 Size 35-48 | smooth leather black | lining with silver ions | replaceable Active Comfort insole (art. 352510) | slip-resistant TPU outsole



DGUV
112-191



01

6701

01



36701

CE, EN ISO 20347:2012 O1, FO, SRC
 Size 35-48 | velour black with **breathable textile inlays** | lining microfibre, breathable, moisture absorbing | reflective stripes | replaceable Active Comfort insole (art. 352510) | slip-resistant TPU outsole



DGUV
112-191



02

6750

02



36750

CE, EN ISO 20347:2012 O2, FO, SRC
 Size 35-48 | smooth leather white | lining microfibre, breathable, moisture absorbing | replaceable Active Comfort insole (art. 352510) | slip-resistant TPU outsole



DGUV
112-191



02

6751

02



36751

CE, EN ISO 20347:2012 O2, FO, SRC
 Size 35-48 | smooth leather black | lining microfibre, breathable, moisture absorbing | replaceable Active Comfort insole (art. 352510) | slip-resistant TPU outsole



DGUV
112-191



Reflexor



REFLEXOR®

SHOE STYLE

- _clog and low shoe
- _ESD
- _FITTING - normal



HIGHLIGHTS

- _Available from size 36 to 46 (according to the model)
- _Microfiber lining breathable and moisture absorbing
- _Massage active-footbed
- _Suitable for orthopedic insoles
- _Wellness

OUTSOLE

- _SRB slip resistance according to EN ISO 20347:2012
- _PU sole extremely light

TECHNOLOGY

- _Antistatic/ESD dissipative according to EN 61340
- _CLIMATE CLASS 1 according to EN 61340-4-3
- _HAND-SEWN SEAM for best walking comfort



INSOLE

- _replaceable Reflexor® insoles

for more information see notes on page 112/113

art. 3567
art. 3568

art. 3569
art. 3570

art. 3565 / 3566
art. 3585 / 3586





REFLEXOR® MEN



01

5700

01



35700

CE, EN ISO 20347:2012 O1, SRB
Size 40-46 | smooth leather white | lining microfibre, breathable,
moisture absorbing | 2 replaceable Reflexor® insoles (art.
3586/3569) | slip-resistant PU outsole



DGUV
112-191



01

5710

01



35710

CE, EN ISO 20347:2012 O1, SRB
Size 40-46 | smooth leather black | lining microfibre, breathable,
moisture absorbing | 2 replaceable Reflexor® insoles (art.
3566/3570) | slip-resistant PU outsole



DGUV
112-191



REFLEXOR® LADIES

**OB****6902****OB****36902**

CE, EN ISO 20347:2012 OB, A, E, SRB

Size 36-42 | smooth leather white | lining microfibre, breathable, moisture absorbing | triple velcro fastening | 2 replaceable Reflexor® insoles (art. 3585/3567) | slip-resistant PU outsole

**DGV**
112-191**OB****6912****OB****36912**

CE, EN ISO 20347:2012 OB, A, E, SRB

Size 36-42 | smooth leather black | lining microfibre, breathable, moisture absorbing | triple velcro fastening | 2 replaceable Reflexor® insoles (art. 3565/3568) | slip-resistant PU outsole

**DGV**
112-191



OB

6903

OB



36903

CE, EN ISO 20347:2012 OB, A, E, SRB
Size 36-42 | smooth leather white | lining microfibre, breathable, moisture absorbing | heel strap foldable, adjustable | instep area with elastic band | 2 replaceable Reflexor® insoles (art. 3585/3567) | slip-resistant PU outsole



DGV
112-191



OB

6913

OB



36913

CE, EN ISO 20347:2012 OB, A, E, SRB
Size 36-42 | smooth leather black | lining microfibre, breathable, moisture absorbing | heel strap foldable, adjustable | instep area with elastic band | 2 replaceable Reflexor® insoles (art. 3565/3568) | slip-resistant PU outsole



DGV
112-191



01

6910

01



36910

CE, EN ISO 20347:2012 O1, SRB
Size 36-42 | smooth leather black | lining microfibre, breathable, moisture absorbing | 2 replaceable Reflexor® insoles (art. 3565/3568) | slip-resistant PU outsole



DGV
112-191



01

6900

01



36900

CE, EN ISO 20347:2012 O1, SRB
Size 36-42 | smooth leather white | lining microfibre, breathable, moisture absorbing | 2 replaceable Reflexor® insoles (art. 3585/3567) | slip-resistant PU outsole



DGV
112-191

**1094****31094**

Size 36-42 | smooth leather white | lining microfibre, breathable, moisture absorbing | integrated Reflexor® massage footbed | slip-resistant PU outsole

**1092****31092**

Size 36-42 | smooth leather black | lining microfibre, breathable, moisture absorbing | integrated Reflexor® massage footbed | slip-resistant PU outsole

**1064****31064**

Size 36-42 | smooth leather white/black | lining microfibre, breathable, moisture absorbing | heel strap non-foldable, adjustable | instep area with elastic band | integrated Reflexor® massage footbed | rutschhemmende PU-Lauf-sohle

**6610****36610**

Size 36-42 | smooth leather black | lining microfibre, breathable, moisture absorbing | instep strap adjustable | integrated Reflexor® massage footbed | slip-resistant PU outsole

Reflexor
COMFORT



REFLEXOR® COMFORT

SHOE STYLE

- _clog
- _ESD
- _FITTING - wide



HIGHLIGHTS

- _Available from size 36 to 43
- _Microfibre lining breathable and moisture absorbing
- _Comfort width
- _Wellness

OUTSOLE

- _SRB slip resistance according to EN ISO 20347:2012
- _PU sole extremely light

TECHNOLOGY

- _Antistatic/ESD dissipative according to EN 61340
- _CLIMATE CLASS 1 according to EN 61340-4-3
- _HAND-SEWN SEAM for best walking comfort



INSOLE

- _replaceable Reflexor® massage active-footbed

More information on page 112



art. 3584
art. 3572



OB

6809

OB



36809

CE, EN ISO 20347:2012 OB, A, E, SRB
Size 36-43 | smooth leather white | lining microfibre, breathable, moisture absorbing | double velcro fastening | replaceable Reflexor® insole (art. 3584) | slip-resistant PU outsole



OB

6819

OB



36819

CE, EN ISO 20347:2012 OB, A, E, SRB
Size 36-43 | smooth leather black | lining microfibre, breathable, moisture absorbing | double velcro fastening | replaceable Reflexor® insole (art. 3572) | slip-resistant PU outsole



OB

6813

OB



36813

CE, EN ISO 20347:2012 OB, A, E, SRB
Size 36-43 | smooth leather black | lining microfibre, breathable, moisture absorbing | heel strap foldable, adjustable | instep area with elastic band | replaceable Reflexor® insole (art. 3572) | slip-resistant PU outsole



OB

6803

OB



36803

CE, EN ISO 20347:2012 OB, A, E, SRB
Size 36-43 | smooth leather white | lining microfibre, breathable, moisture absorbing | heel strap foldable, adjustable | instep area with elastic band | replaceable Reflexor® insole (art. 3584) | slip-resistant PU outsole



**OB****6874****OB****36874**

CE, EN ISO 20347:2012 OB, A, E, SRB
 Size 36-43 | smooth leather white | lining microfibre, breathable, moisture absorbing | heel strap non-foldable, adjustable | instep area with elastic band | replaceable Reflexor® insole (art. 3584) | slip-resistant PU outsole

**OB****6872****OB****36872**

CE, EN ISO 20347:2012 OB, A, E, SRB
 Size 36-43 | velours black | lining microfibre, breathable, moisture absorbing | heel strap non-foldable, adjustable | instep area with elastic band | replaceable Reflexor® insole (art. 3572) | slip-resistant PU outsole



SERVICE



300219

CE, EN ISO 20347:2012 O1, FO, SRC
Size 35-43 | microfibre black in leather optic | lining microfibre, breathable, moisture absorbing | instep area with lacing | slip-resistant PU/rubber outsole



300119

CE, EN ISO 20347:2012 O1, FO, SRC
Size 35-43 | microfibre black in leather optic | lining microfibre, breathable, moisture absorbing | instep area with elastic band | slip-resistant PU/rubber outsole





3000

Size 34-42 | smooth leather black | padded ankle support | instep area with lacing | comfort footbed | heel 45 mm | slip-resistant outsole



3081

Size 36-42 | smooth leather black | lining microfibre, breathable, moisture absorbing | heel strap non-foldable, cushioned | instep area with lacing | integrated Reflexor® massage footbed | slip-resistant outsole



01

3030

CE, EN ISO 20347:2012 O1, FO, SRB
Size 36-42 | smooth leather black | lining microfibre, breathable, moisture absorbing | velcro fastening over instep | integrated acc footbed | slip-resistant outsole



7401

Size 36-42 | calf leather black | integrated acc footbed | slip-resistant outsole

NOTE

PAY ATTENTION TO THIS LOGO!



THESE MODELS ARE ALSO SUITABLE
FOR THE SERVICE STAFF.

MANAGER



OUTSOLE

- **_Leather outsole with ESD compliant according to EN 61340**



SHOE STYLE

- **_Low shoe**
- **_ESD**
- **_FITTING - narrow-normal**



HIGHLIGHTS

- **_Available from size 39 to 47**
- **_Microfibre lining breathable and moisture absorbing**
- **_Heel made entirely of leather**
- **_Full grain calf leather**

**3120**

Size 39-47 | calf leather black | lining microfibre, breathable, moisture absorbing | top layer microfibre | ESD dissipative leather outsole

**3110**

Size 39-47 | calf leather black | lining microfibre, breathable, moisture absorbing | top layer microfibre | ESD dissipative leather outsole

**3130**

Size 39-47 | calf leather black | lining microfibre, breathable, moisture absorbing | top layer microfibre | ESD dissipative leather outsole

**3121**

Size 39-47 | calf leather braun | lining microfibre, breathable, moisture absorbing | top layer microfibre | ESD dissipative leather outsole

**BUSINESS
LADY**





3980

Size 36-42 | smooth leather black | lining microfibre, breathable, moisture absorbing | instep area with lacing | heel 60 mm | ESD dissipative outsole



3990

Size 36-42 | smooth leather black | lining microfibre, breathable, moisture absorbing | heel 60 mm | ESD dissipative outsole



3940

Size 36-42 | smooth leather black | lining microfibre, moisture absorbing | heel 60 mm | ESD dissipative outsole



3920

DISCONTINUED
Size 36-42 | smooth leather black | lining microfibre, moisture absorbing | instep area with elastic band | integrated acc footbed | heel 40 mm

**BUSINESS
MEN**





OB



32922

CE, EN ISO 20347:2012 OB, A, SRA
 Size 39-47 | smooth leather black | lining microfibre, breathable,
 moisture absorbing | slip-resistant ESD dissipative rubber outsole



01



32430

CE, EN ISO 20347:2012 O1, SRB
 Size 40-47 | smooth leather black | lining microfibre, breathable,
 moisture absorbing | insole microfibre | slip-resistant ESD
 dissipative rubber outsole



01



32450

CE, EN ISO 20347:2012 O1, SRB
 Size 40-47 | smooth leather black | lining microfibre, breathable,
 moisture absorbing | insole microfibre | slip-resistant ESD
 dissipative rubber outsole



CLEAN ROOM





3900

Size* Gr. 1 - Gr. 5 | white | upper integrity 1750 antibacterial | washable in industrial washing up to 60°C | artificial leather sole | overshoe with elastic instep



3910

Size* Gr. 1 - Gr. 5 | hellblau | upper integrity 1750 antibacterial | washable in industrial washing up to 60°C | artificial leather sole | overshoe with elastic instep

***Size:**

Gr. 1 = 36-37 | Gr. 2 = 38-39 | Gr. 3 = 40-43 | Gr. 4 = 44-46 | Gr. 5 = 47-48



01



3620

CE, EN ISO 20347:2012 01, SRA

Size 35-47 | microfibre white | fixed gaitor, cleanroom textile



individual solutions on request

The special shoe shown above is only an example of an individual solution. Tell us about your requirements and together we will find the solutions which best suits to them within a short time. Please contact us at abebe@abebe.de

**AUTO-
CLAVABLE**



AUTOCLAVABLE

SHOE STYLE

- **_clog**
- **_ESD**
- **_FITTING - normal**



OUTSOLE

- **_SRC slip resistance**
according to EN ISO 20347:2012
- **_Sole abrasion resistant**

HIGHLIGHTS

- **_Available from size 35 to 46**
- **_Autoclavable special material**
- **_Autoclavable at 135°C,
5 min (no additives)**
- **_Washable at 60°C,
(no additives)**

CAUTION

To avoid any damage on the clogs they must not touch each other at any time during the autoclaving process.



TECHNOLOGY

- **_Antistatic/ESD dissipative** according to EN 61340
- **_HEEL STRAP**
adjustable, foldable





AUTOCLAVABLE



OB

9600

OB



39600

CE, EN ISO 20347:2012 OB, A, E, SRC

Double sizes* 35/**36** - 45/**46** | special material white | heel strap foldable, adjustable | autoclavable | slip-resistant outsole



OB

9610

OB



39610

CE, EN ISO 20347:2012 OB, A, E, SRC

Double sizes* 35/**36** - 45/**46** | special material blue | heel strap foldable, adjustable | autoclavable | slip-resistant outsole



CAUTION

To avoid any damage on the clogs they must not touch each other at any time during the autoclaving process.





AUTOCLAVABLE



OB

9620

OB



39620

CE, EN ISO 20347:2012 OB, A, E, SRC

Double sizes* 35/**36** - 45/**46** | special material green | heel strap foldable, adjustable | autoclavable | slip-resistant outsole



OB

9630

OB



39630

CE, EN ISO 20347:2012 OB, A, E, SRC

Double sizes* 35/**36** - 45/**46** | special material orange | heel strap foldable, adjustable | autoclavable | slip-resistant outsole



! INFORMATION

*Double sizes:

Please use size in bold when placing your order.

35/**36**, 37/**38**, 39/**40**,

41/**42**, 43/**44**, 45/**46**

INSOLES



ACTIVE COMFORT

replaceable Active Comfort insole | with anti odour activated carbon | cushioning effect | breathability | moisture absorption | moisture release to the outside | antibacterial | light | antistatic / ESD-compatible according to EN 61340

351710 »x-light«	open	Size 35–48
351610 »x-light«	closed	Size 35–48
352610 »Dynamic«		Size 35–48
352710 »easy«		Size 35–48
352510 »uni6«		Size 35–48



ACTIVE MEDIFIT

replaceable Active MediFit insole | with anti odour activated carbon | stabilization of deep muscles thanks to the Activ Concept | cushioning effect | breathability | moisture absorption | reduced tiredness in standing position due to uniform weight distribution | antibacterial | antistatic / ESD-compatible according to EN 61340

352630 »Dynamic flow«	Size 35–48
-----------------------	------------



AIR CUSHION

for „air cushion“ occupational shoes
replaceable insole for shoes with air cushion sole | antistatic / ESD dissipative according to EN 61340

3551	grey	Size 35–47
------	------	------------



REFLEXOR[®] MASSAGE

for „Reflexor[®]“ occupational shoes
replaceable „Reflexor[®]“ Massage active-footbed | stimulates the blood circulation by massage knobs | orthopaedic footbed | Antistatic / ESD dissipative according to EN 61340

3565	anthracite	Size 36–42
3585	white	Size 36–42
3566	anthracite	Size 40–46
3586	white	Size 40–46
3572 »comfort«	anthracite	Size 36–43
3584 »comfort«	white	Size 36–43



REFLEXOR® LADIES

for „Reflexor®“ occupational shoes ladies
replaceable, microfibre covered „Reflexor®“ footbed | plain surface |
antistatic / ESD dissipative according to EN 61340

3567	white	Size 36–42
3568	anthracite	Size 36–42

REFLEXOR® MEN

for „Reflexor®“ occupational shoes men
replaceable, microfibre covered „Reflexor®“ footbed | plain surface |
antistatic / ESD dissipative according to EN 61340

3569	white	Size 40–46
3570	anthracite	Size 40–46

SET OF SHOELACES



SET OF SHOELACES

Set of 3 colours (red, bleu and green)

370118	(low lace-up shoes)	length 80 cm
370110	(boots)	length 100 cm



TECHNICAL INFORMATION

BASIC REQUIREMENTS | EXTRACT

	EN ISO 20347 OCCUPATIONAL SHOES	EN ISO 20345 SAFETY SHOES
anti-slip property (SRA, SRB or SRC)	OB	SB
impact resistance of the toe cap	–	200 Joule

ADDITIONAL REQUIREMENTS

closed heel area antistatic energy absorption in the heel area	O1	S1
same as O1 plus resistance to penetration and absorption of water	O2	S2
same as O2 plus penetration resistance and profiled sole	O3	S3

REQUIREMENTS | STANDARDS

	OB	O1	O2	O3	SB	S1	S2	S3
--	----	----	----	----	----	----	----	----

BASIC REQUIREMENTS | EXTRACT

toe protection (200 joules)					●	●	●	●
anti-slip property (SRA, SRB or SRC)	●	●	●	●	●	●	●	●

ADDITIONAL REQUIREMENTS | EXTRACT

energy absorption in the heel area	E	○	●	●	●	○	●	●	●
heat insulation of the outsole	HI	○	○	○	○	○	○	○	○
cold insulation of the outsole	CI	○	○	○	○	○	○	○	○
penetration resistance	P	○	○	○	●	○	○	○	●
antistatic property	A	○	●	●	●	○	●	●	●
fuel resistance	F0	○	○	○	○	○	●	●	●

● fulfills requirements

○ requirement may be fulfilled, but is optional

O = Occupational shoes

S = Safety shoes



SLIP RESISTANCE ACCORDING TO EN ISO 20344-20347:2012

In 2004 the standards EN ISO 20344-20347:2004 have been introduced, supplemented in 2007 by appendix A, concerning requests for slip resistance which are now regulated by the latest standards EN ISO 20344-20347:2012.

For testing the slip resistance, the shoe is fixed in different positions in a measuring device and is drawn over various test floorings. The established value is called slip coefficient.

Tests are performed on various flooring materials such as ceramic tiles with SLS and steel floor with glycerol. Depending on the result of the tested shoe on ceramic tiles or steel floor or even on both, the slip resistance is classified into SRA, SRB or SRC. In standard EN ISO 13287:2007, replacing DIN 4843 part 100 earlier used in Germany, the testing processes are described in detail.

For more information please contact any authorised test and certification institute.




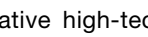
TECHNOLOGY

SLIP RESISTANCE EN ISO 20344-20347:2012

SRA	Slip resistance on floors with ceramic tiles with SLS (sodium lauryl ether sulfate solution)
SRB	Slip resistance on steel floor with glycerol
SRC	Slip resistance on floor with ceramic tiles with SLS and on steel floor with glycerol (SRC=SRA+SRB)

TECHNICAL INFORMATION

A micro

 **A** micro is an innovative high-tech material which is especially water-resistant and breathable. It even surpasses hydrophobic leather. It is washable up to 30°C without shrinking and anti-bacterial, which is making it perfect for the use in hygienic sensitive areas. Additionally it can be equipped with various treatments such as silver ions. Due to its special structure it is light and smooth but in the same time strong and tear resistant.  **A** micro is leather looking without turning yellow with sunlight.

MICROFIBRE LINING

This material is a new breathable high-tech microfibre lining that can absorb 8 times its weight of water. It offers a maximum comfort and a complete dryness for a perfect foot climate.

- ▶ Absorbs moisture and transfer it outside
- ▶ Breathable - antimicrobial - Anti-odours
- ▶ Temperature regulating
- ▶ Anti-allergy
- ▶ CO₂ neutral production
- ▶ Free of pollutants
- ▶ Odourless and tearproof

The microfibre linings that we use in our shoes are certified by OEKO-TEX® STANDARD 100 which is an independent, extensive testing and certification system. Along the certification all components of the tested products are reviewed for different kinds of noxious substances, most of the time even beyond the legal guidelines.

Depending on how sensitive the skin is and how much a product is in contact with skin, OEKO-TEX® will adjust the specifications of its testing to be either strict or more lenient.

According to the certificate our linings could thus be used for babies and small children, too.

LINING COMFORTEMP®

Innovative mPCM-Technology developed by Freudenberg (micro-encapsulated Phase Change Material - micro-capsules equalizing temperature, bedded in non-woven materials).

- ▶ When body-temperature increases the micro-capsules change their physical state and become liquid for a cooling effect. The decrease of body temperature makes them turn back to solid for a warming effect.
- ▶ Excellent breathability and moisture transfer ensures a feeling of comfort and dryness
- ▶ No matter if you are at work, doing sports or in your free time Comfortemp® provides you with your personal climate-balance.



INDEX

Art.-No.	Page	Size	Series	Description	Standard	Marking	Insole
1064	93	36 - 42	Reflexor	clog, fixed heel strap	antistatic		-
1092	93	36 - 42	Reflexor	mule	antistatic		-
1094	93	36 - 42	Reflexor	mule	antistatic		-
2370	67	35 - 47	air cushion	slip-on	CE, EN ISO 20347	O1, SRA	-
2600	67	35 - 47	air cushion	lace-up shoe	CE, EN ISO 20347	O2, SRA	3551
2610	67	35 - 47	air cushion	lace-up shoe	CE, EN ISO 20347	O2, SRA	3551
2650	67	35 - 47	air cushion	lace-up shoe	CE, EN ISO 20347	O2, SRA	3551
2700	66	39 - 47	air cushion	slip-on	CE, EN ISO 20347	O2, SRA	3551
2710	66	39 - 47	air cushion	slip-on	CE, EN ISO 20347	O2, SRA	3551
3000	99	34 - 42	Service	service shoe	CE		-
3030	99	36 - 42	Service	service shoe	CE, EN ISO 20347	O1, FO, SRB	-
3081	99	36 - 42	Service	sandal			-
3110	101	39 - 47	Manager	lace-up shoe	ESD dissipative		-
3120	101	39 - 47	Manager	lace-up shoe	ESD dissipative		-
3121	101	39 - 47	Manager	lace-up shoe	ESD dissipative		-
3130	101	39 - 47	Manager	lace-up shoe	ESD dissipative		-
3620	107	35 - 47	Clean room	boot	CE, EN ISO 20347	O1, SRA	-
3900	107	1 - 5	Clean room	overshoe			-
3910	107	1 - 5	Clean room	overshoe			-
3920	103	36 - 42	Business Lady	trotteur			-
3940	103	36 - 42	Business Lady	pumps	ESD dissipative		-
3980	103	36 - 42	Business Lady	pumps	ESD dissipative		-
3990	103	36 - 42	Business Lady	pumps	ESD dissipative		-
4040	62	34 - 48	Nature	clog, fixed heel strap	CE, EN ISO 20347	OB, A, FO, SRC	-
4045	62	34 - 48	Nature	clog, fixed heel strap	CE, EN ISO 20347	OB, A, FO, SRC	-
4050	62	34 - 48	Nature	clog, fixed heel strap	CE, EN ISO 20347	OB, A, FO, SRC	-
4055	62	34 - 48	Nature	clog, fixed heel strap	CE, EN ISO 20347	OB, A, FO, SRC	-
4080	63	34 - 48	Nature	mule	CE, EN ISO 20347	OB, A, FO, SRC	-
4085	63	34 - 48	Nature	mule	CE, EN ISO 20347	OB, A, FO, SRC	-
4086	63	34 - 48	Nature	mule	CE, EN ISO 20347	OB, A, FO, SRC	-
4090	63	34 - 48	Nature	sandal	CE, EN ISO 20347	OB, A, FO, SRC	-
4096	63	34 - 48	Nature	sandal	CE, EN ISO 20347	OB, A, FO, SRC	-
5001	27	36 - 42	high Original	clog, foldable heel strap	CE, EN ISO 20347	OB, A, E, FO, SRC	-
5004	27	36 - 42	high Original	clog, foldable heel strap	CE, EN ISO 20347	OB, A, E, FO, SRC	-
5007	23	35 - 48	The Original	clog, foldable heel strap	CE, EN ISO 20347	OB, A, FO, SRC	-
5008	27	36 - 42	high Original	clog, foldable heel strap	CE, EN ISO 20347	OB, A, E, FO, SRC	-
5009	27	36 - 42	high Original	clog, foldable heel strap	CE, EN ISO 20347	OB, A, E, FO, SRC	-
5013	22	35 - 48	The Original	clog, foldable heel strap	CE, EN ISO 20347	OB, A, FO, SRC	-
5080	23	35 - 43	The Original	clog, foldable heel strap	CE, EN ISO 20347	OB, A, FO, SRC	-
5081	22	35 - 43	The Original	clog, foldable heel strap	CE, EN ISO 20347	OB, A, FO, SRC	-
5100	52	36 - 47	Rubber	clog, fixed heel strap	CE, EN ISO 20347	OB, A, FO, SRC	-
5150	52	36 - 47	Rubber	clog, fixed heel strap	CE, EN ISO 20347	OB, A, FO, SRC	-
5200	50	36 - 47	Rubber	clog, foldable heel strap	CE, EN ISO 20347	OB, A, FO, SRC	-
5250	50	36 - 47	Rubber	clog, foldable heel strap	CE, EN ISO 20347	OB, A, FO, SRC	-
5300	51	36 - 47	Rubber	clog, foldable heel strap	CE, EN ISO 20347	OB, A, FO, SRC	-
5310	51	36 - 47	Rubber	clog, foldable heel strap	CE, EN ISO 20347	OB, A, FO, SRC	-
5700	90	40 - 46	Reflexor	lace-up shoe	CE, EN ISO 20347	O1, SRB	3586/ 3569
5710	90	40 - 46	Reflexor	lace-up shoe	CE, EN ISO 20347	O1, SRB	3566/ 3570
6610	93	36 - 42	Reflexor	sandal			-
6701	87	35 - 48	uni6	lace-up shoe	CE, EN ISO 20347	O1, FO, SRC	352510



Art.-No.	Page	Size	Series	Description	Standard	Marking	Insole
6721	86	35 - 48	uni6	lace-up shoe	CE, EN ISO 20347	O1, FO, SRC	352510
6724	80	35 - 43	uni6	lace-up shoe	CE, EN ISO 20347	O1, FO, SRC	352510
6728	79	35 - 48	uni6	lace-up shoe	CE, EN ISO 20347	O2, FO, SRC	352510
6729	79	35 - 48	uni6	lace-up shoe	CE, EN ISO 20347	O2, FO, SRC	352510
6731	86	35 - 48	uni6	lace-up shoe	CE, EN ISO 20347	O1, FO, SRC	352510
6740	81	35 - 48	uni6	slip-on	CE, EN ISO 20347	O2, FO, SRC	352510
6741	81	35 - 48	uni6	slip-on	CE, EN ISO 20347	O2, FO, SRC	352510
6750	87	35 - 48	uni6	lace-up shoe	CE, EN ISO 20347	O2, FO, SRC	352510
6751	87	35 - 48	uni6	lace-up shoe	CE, EN ISO 20347	O2, FO, SRC	352510
6760	82	35 - 48	uni6	lace-up shoe	CE, EN ISO 20347	O1, FO, SRC	352510
6761	82	35 - 48	uni6	lace-up shoe	CE, EN ISO 20347	O2, FO, SRC	352510
6762	83	35 - 48	uni6	lace-up shoe	CE, EN ISO 20347	O1, FO, SRC	352510
6763	83	35 - 48	uni6	lace-up shoe	CE, EN ISO 20347	O1, FO, SRC	352510
6766	80	35 - 43	uni6	lace-up shoe	CE, EN ISO 20347	O2, FO, SRC	352510
6771	87	35 - 48	uni6	lace-up shoe	CE, EN ISO 20347	O2, FO, SRC	352510
6772	79	35 - 48	uni6	lace-up shoe	CE, EN ISO 20347	O2, FO, SRC	352510
6773	78	35 - 48	uni6	lace-up shoe	CE, EN ISO 20347	O2, FO, SRC	352510
6774	78	35 - 48	uni6	lace-up shoe	CE, EN ISO 20347	O2, FO, SRC	352510
6775	78	35 - 48	uni6	lace-up shoe	CE, EN ISO 20347	O2, FO, SRC	352510
6776	79	35 - 48	uni6	lace-up shoe	CE, EN ISO 20347	O2, FO, SRC	352510
6780	84	35 - 48	uni6	lace-up shoe	CE, EN ISO 20347	O2, FO, SRC	352510
6781	84	35 - 48	uni6	lace-up shoe	CE, EN ISO 20347	O2, FO, SRC	352510
6786	85	35 - 48	uni6	lace-up shoe	CE, EN ISO 20347	O2, FO, SRC	352510
6787	85	35 - 48	uni6	lace-up shoe	CE, EN ISO 20347	O2, FO, SRC	352510
6795	81	35 - 48	uni6	sandal, velcro	CE, EN ISO 20347	O1, FO, SRC	352510
6796	81	35 - 48	uni6	sandal, velcro	CE, EN ISO 20347	O1, FO, SRC	352510
6803	96	36 - 43	Reflexor Comfort	clog, foldable heel strap	CE, EN ISO 20347	OB, A, E, SRB	3584
6809	96	36 - 43	Reflexor Comfort	mule	CE, EN ISO 20347	OB, A, E, SRB	3584
6813	96	36 - 43	Reflexor Comfort	clog, foldable heel strap	CE, EN ISO 20347	OB, A, E, SRB	3572
6819	96	36 - 43	Reflexor Comfort	mule	CE, EN ISO 20347	OB, A, E, SRB	3572
6872	97	36 - 43	Reflexor Comfort	sandal	CE, EN ISO 20347	OB, A, E, SRB	3572
6874	97	36 - 43	Reflexor Comfort	sandal	CE, EN ISO 20347	OB, A, E, SRB	3584
6900	92	36 - 42	Reflexor	lace-up shoe	CE, EN ISO 20347	O1, SRB	3585/ 3567
6902	91	36 - 42	Reflexor	mule	CE, EN ISO 20347	OB, A, E, SRB	3585/ 3567
6903	92	36 - 42	Reflexor	clog, foldable heel strap	CE, EN ISO 20347	OB, A, E, SRB	3585/ 3567
6910	92	36 - 42	Reflexor	lace-up shoe	CE, EN ISO 20347	O1, SRB	3565/ 3568
6912	91	36 - 42	Reflexor	mule	CE, EN ISO 20347	OB, A, E, SRB	3565/ 3568
6913	92	36 - 42	Reflexor	clog, foldable heel strap	CE, EN ISO 20347	OB, A, E, SRB	3565/ 3568
7001	27	36 - 42	high Original	clog, foldable heel strap	CE, EN ISO 20347	OB, A, E, FO, SRC	-
7002	27	36 - 42	high Original	clog, foldable heel strap	CE, EN ISO 20347	OB, A, E, FO, SRC	-
7008	27	36 - 42	high Original	clog, foldable heel strap	CE, EN ISO 20347	OB, A, E, FO, SRC	-
7009	27	36 - 42	high Original	clog, foldable heel strap	CE, EN ISO 20347	OB, A, E, FO, SRC	-
7020	20	35 - 48	the Original	clog, foldable heel strap	CE, EN ISO 20347	OB, FO, SRC	-
7021	20	35 - 48	the Original	clog, foldable heel strap	CE, EN ISO 20347	OB, FO, SRC	-
7030	20	35 - 48	the Original	clog, foldable heel strap	CE, EN ISO 20347	OB, FO, SRC	-
7031	20	35 - 48	the Original	clog, foldable heel strap	CE, EN ISO 20347	OB, FO, SRC	-
7050	24	35 - 48	the Original	clog	CE, EN ISO 20347	OB, FO, SRC	-
7080	23	35 - 43	the Original	clog, foldable heel strap	CE, EN ISO 20347	OB, FO, SRC	-
7081	22	35 - 43	the Original	clog, foldable heel strap	CE, EN ISO 20347	OB, FO, SRC	-
7090	23	35 - 43	the Original	clog, foldable heel strap	CE, EN ISO 20347	OB, FO, SRC	-



Art.-No.	Page	Size	Series	Description	Standard	Marking	Insole
7091	22	35 - 43	the Original	clog, foldable heel strap	CE, EN ISO 20347	OB, FO, SRC	-
7201	24	35 - 48	the Original	clog, foldable heel strap	CE, EN ISO 20347	OB, A, FO, SRC	-
7208	24	35 - 48	the Original	clog, fixed heel strap	CE, EN ISO 20347	OB, A, FO, SRC	-
7209	24	35 - 48	the Original	clog, fixed heel strap	CE, EN ISO 20347	OB, A, FO, SRC	-
7310	36	35 - 48	Dynamic	clog, foldable heel strap	CE, EN ISO 20347	OB, A, E, FO, SRC	352610
7312	36	35 - 48	Dynamic	clog, foldable heel strap	CE, EN ISO 20347	OB, A, E, FO, SRC	352610
7313	36	35 - 48	Dynamic	clog, foldable heel strap	CE, EN ISO 20347	OB, A, E, FO, SRC	352610
7315	36	35 - 48	Dynamic	clog, foldable heel strap	CE, EN ISO 20347	OB, A, E, FO, SRC	352610
7320	37	35 - 43	Dynamic	clog, fixed heel strap	CE, EN ISO 20347	OB, A, E, FO, SRC	352610
7326	38	35 - 48	Dynamic	clog, fixed heel strap	CE, EN ISO 20347	OB, A, E, FO, SRC	352610
7327	38	35 - 48	Dynamic	clog, fixed heel strap	CE, EN ISO 20347	OB, A, E, FO, SRC	352610
7328	38	35 - 48	Dynamic	clog, fixed heel strap	CE, EN ISO 20347	OB, A, E, FO, SRC	352610
7329	38	35 - 48	Dynamic	clog, fixed heel strap	CE, EN ISO 20347	OB, A, E, FO, SRC	352610
7331	42	35 - 48	Dynamic	clog, fixed heel strap	CE, EN ISO 20347	OB, A, E, FO, SRC	352610
7332	42	35 - 48	Dynamic	clog, fixed heel strap	CE, EN ISO 20347	OB, A, E, FO, SRC	352610
7335	42	35 - 48	Dynamic	clog, fixed heel strap	CE, EN ISO 20347	OB, A, E, FO, SRC	352610
7341	43	35 - 48	Dynamic	clog, fixed heel strap	CE, EN ISO 20347	OB, A, E, FO, SRC	352610
7342	43	35 - 48	Dynamic	clog, fixed heel strap	CE, EN ISO 20347	OB, A, E, FO, SRC	352610
7345	43	35 - 48	Dynamic	clog, fixed heel strap	CE, EN ISO 20347	OB, A, E, FO, SRC	352610
7351	37	35 - 48	Dynamic	clog, foldable heel strap	CE, EN ISO 20347	OB, A, E, FO, SRC	352610
7360	39	35 - 48	Dynamic	clog, fixed heel strap	CE, EN ISO 20347	OB, A, E, FO, SRC	352610
7361	39	35 - 48	Dynamic	clog, fixed heel strap	CE, EN ISO 20347	OB, A, E, FO, SRC	352610
7362	41	35 - 48	Dynamic	clog, fixed heel strap	CE, EN ISO 20347	OB, A, E, FO, SRC	352610
7363	41	35 - 48	Dynamic	clog, fixed heel strap	CE, EN ISO 20347	OB, A, E, FO, SRC	352610
7365	41	35 - 48	Dynamic	clog, fixed heel strap	CE, EN ISO 20347	OB, A, E, FO, SRC	352610
7366	41	35 - 48	Dynamic	clog, fixed heel strap	CE, EN ISO 20347	OB, A, E, FO, SRC	352610
7367	40	35 - 48	Dynamic	clog, fixed heel strap	CE, EN ISO 20347	OB, A, E, FO, SRC	352610
7368	40	35 - 48	Dynamic	clog, fixed heel strap	CE, EN ISO 20347	OB, A, E, FO, SRC	352610
7369	40	35 - 48	Dynamic	clog, fixed heel strap	CE, EN ISO 20347	OB, A, E, FO, SRC	352610
7370	32	35 - 48	Dynamic Flow	lace-up shoe	CE, EN ISO 20347	O1, FO, SRC	352630
7374	32	35 - 48	Dynamic Flow	low shoe, easy put on and off	CE, EN ISO 20347	O1, FO, SRC	352630
7375	33	35 - 48	Dynamic Flow	low shoe, easy put on and off	CE, EN ISO 20347	O1, FO, SRC	352630
7376	33	35 - 48	Dynamic Flow	low shoe, easy put on and off	CE, EN ISO 20347	O1, FO, SRC	352630
7401	99	36 - 42	Service	slip-on			-
7520	29	36 - 42	the Original plus	clog, foldable heel strap	CE, EN ISO 20347	OB, A, E, FO, SRC	-
7521	29	36 - 42	the Original plus	clog, foldable heel strap	CE, EN ISO 20347	OB, A, E, FO, SRC	-
7530	29	36 - 42	the Original plus	clog, foldable heel strap	CE, EN ISO 20347	OB, A, E, FO, SRC	-
7531	29	36 - 42	the Original plus	clog, foldable heel strap	CE, EN ISO 20347	OB, A, E, FO, SRC	-
7620	46	35 - 43	Easy	clog, fixed heel strap	CE, EN ISO 20347	OB, A, E, FO, SRC	352710
7621	46	35 - 43	Easy	clog, fixed heel strap	CE, EN ISO 20347	OB, A, E, FO, SRC	352710
7622	47	35 - 48	Easy	clog, fixed heel strap	CE, EN ISO 20347	OB, A, E, FO, SRC	352710
7623	47	35 - 43	Easy	clog, fixed heel strap	CE, EN ISO 20347	OB, A, E, FO, SRC	352710
7630	47	35 - 48	Easy	clog, foldable heel strap	CE, EN ISO 20347	OB, A, E, FO, SRC	352710
7631	47	35 - 48	Easy	clog, foldable heel strap	CE, EN ISO 20347	OB, A, E, FO, SRC	352710
8040	62	34 - 48	Nature	clog, fixed heel strap	CE, EN ISO 20347	OB, A, FO, SRC	-
8045	62	34 - 48	Nature	clog, fixed heel strap	CE, EN ISO 20347	OB, A, FO, SRC	-
8200	58	36 - 47	Arrow	clog, foldable heel strap	CE, EN ISO 20347	OB, A, FO, SRA	-
8202	58	48 - 51	Arrow	clog, foldable heel strap	CE, EN ISO 20347	OB, A, FO, SRA	-
8210	58	36 - 47	Arrow	clog, foldable heel strap	CE, EN ISO 20347	OB, A, FO, SRA	-
8212	58	48 - 51	Arrow	clog, foldable heel strap	CE, EN ISO 20347	OB, A, FO, SRA	-
8300	57	36 - 47	Arrow	clog, foldable heel strap	CE, EN ISO 20347	OB, A, FO, SRA	-
8302	57	48 - 51	Arrow	clog, foldable heel strap	CE, EN ISO 20347	OB, A, FO, SRA	-
8310	57	36 - 47	Arrow	clog, foldable heel strap	CE, EN ISO 20347	OB, A, FO, SRA	-
8312	57	48 - 51	Arrow	clog, foldable heel strap	CE, EN ISO 20347	OB, A, FO, SRA	-



Art.-No.	Page	Size	Series	Description	Standard	Marking	Insole
8320	56	36 - 47	Arrow	clog, foldable heel strap	CE, EN ISO 20347	OB, A, FO, SRA	-
8322	56	48 - 51	Arrow	clog, foldable heel strap	CE, EN ISO 20347	OB, A, FO, SRA	-
8330	56	36 - 47	Arrow	clog, foldable heel strap	CE, EN ISO 20347	OB, A, FO, SRA	-
8332	56	48 - 51	Arrow	clog, foldable heel strap	CE, EN ISO 20347	OB, A, FO, SRA	-
8400	59	36 - 47	Arrow	clog, fixed heel strap	CE, EN ISO 20347	OB, A, FO, SRA	-
8600	59	36 - 47	Arrow	clog, fixed heel strap	CE, EN ISO 20347	OB, A, FO, SRA	-
8602	59	48 - 51	Arrow	clog, fixed heel strap	CE, EN ISO 20347	OB, A, FO, SRA	-
9100	52	36 - 47	Rubber	clog, fixed heel strap	CE, EN ISO 20347	OB, A, FO, SRC	-
9110	52	36 - 47	Rubber	clog, fixed heel strap	CE, EN ISO 20347	OB, A, FO, SRC	-
9150	52	36 - 47	Rubber	clog, fixed heel strap	CE, EN ISO 20347	OB, A, FO, SRC	-
9200	50	36 - 47	Rubber	clog, foldable heel strap	CE, EN ISO 20347	OB, A, FO, SRC	-
9250	50	36 - 47	Rubber	clog, foldable heel strap	CE, EN ISO 20347	OB, A, FO, SRC	-
9252	50	36 - 47	Rubber	clog, foldable heel strap	CE, EN ISO 20347	OB, A, FO, SRC	-
9300	51	36 - 47	Rubber	clog, foldable heel strap	CE, EN ISO 20347	OB, A, FO, SRC	-
9310	51	36 - 47	Rubber	clog, foldable heel strap	CE, EN ISO 20347	OB, A, FO, SRC	-
9600	110	35 - 46	Autoclavable	clog, foldable heel strap	CE, EN ISO 20347	OB, A, E, SRC	-
9610	110	35 - 46	Autoclavable	clog, foldable heel strap	CE, EN ISO 20347	OB, A, E, SRC	-
9620	111	35 - 46	Autoclavable	clog, foldable heel strap	CE, EN ISO 20347	OB, A, E, SRC	-
9630	111	35 - 46	Autoclavable	clog, foldable heel strap	CE, EN ISO 20347	OB, A, E, SRC	-
31064	93	36 - 42	Reflexor	clog, fixed heel strap	ESD dissipative		-
31092	93	36 - 42	Reflexor	mule	ESD dissipative		-
31094	93	36 - 42	Reflexor	mule	ESD dissipative		-
32300	66	35 - 47	air cushion	slip-on, perforated	CE, EN ISO 20347	O1, SRA	3551
32310	66	39 - 47	air cushion	slip-on, perforated	CE, EN ISO 20347	O1, SRA	3551
32370	67	35 - 47	air cushion	slip-on	CE, EN ISO 20347	O1, SRA	-
32430	105	40 - 47	Business men	lace-up shoe	CE, EN ISO 20347	O1, SRB	-
32450	105	40 - 47	Business men	lace-up shoe	CE, EN ISO 20347	O1, SRB	-
32600	67	35 - 47	air cushion	lace-up shoe	CE, EN ISO 20347	O2, SRA	3551
32610	67	35 - 47	air cushion	lace-up shoe	CE, EN ISO 20347	O2, SRA	3551
32650	67	35 - 47	air cushion	lace-up shoe	CE, EN ISO 20347	O2, SRA	3551
32700	66	39 - 47	air cushion	slip-on	CE, EN ISO 20347	O2, SRA	3551
32710	66	39 - 47	air cushion	slip-on	CE, EN ISO 20347	O2, SRA	3551
32922	105	39 - 47	Business men	lace-up shoe	CE, EN ISO 20347	OB, SRA	-
35600	58	36 - 47	Arrow	clog, foldable heel strap	CE, EN ISO 20347	OB, A, FO, SRA	-
35602	58	48 - 51	Arrow	clog, foldable heel strap	CE, EN ISO 20347	OB, A, FO, SRA	-
35700	90	40 - 46	Reflexor	lace-up shoe	CE, EN ISO 20347	O1, SRB	3586/ 3569
35710	90	40 - 46	Reflexor	lace-up shoe	CE, EN ISO 20347	O1, SRB	3566/ 3570
36610	93	36 - 42	Reflexor	sandal	ESD dissipative		-
36701	87	35 - 48	uni6	lace-up shoe	CE, EN ISO 20347	O1, FO, SRC	352510
36721	86	35 - 48	uni6	lace-up shoe	CE, EN ISO 20347	O1, FO, SRC	352510
36724	80	35 - 43	uni6	lace-up shoe	CE, EN ISO 20347	O1, FO, SRC	352510
36728	79	35 - 48	uni6	lace-up shoe	CE, EN ISO 20347	O2, FO, SRC	352510
36729	79	35 - 48	uni6	lace-up shoe	CE, EN ISO 20347	O2, FO, SRC	352510
36731	86	35 - 48	uni6	lace-up shoe	CE, EN ISO 20347	O1, FO, SRC	352510
36740	81	35 - 48	uni6	slip-on	CE, EN ISO 20347	O2, FO, SRC	352510
36741	81	35 - 48	uni6	slip-on	CE, EN ISO 20347	O2, FO, SRC	352510
36750	87	35 - 48	uni6	lace-up shoe	CE, EN ISO 20347	O2, FO, SRC	352510
36751	87	35 - 48	uni6	lace-up shoe	CE, EN ISO 20347	O2, FO, SRC	352510
36760	82	35 - 48	uni6	lace-up shoe	CE, EN ISO 20347	O1, FO, SRC	352510
36761	82	35 - 48	uni6	lace-up shoe	CE, EN ISO 20347	O2, FO, SRC	352510
36762	83	35 - 48	uni6	lace-up shoe	CE, EN ISO 20347	O1, FO, SRC	352510
36763	83	35 - 48	uni6	lace-up shoe	CE, EN ISO 20347	O1, FO, SRC	352510
36766	80	35 - 43	uni6	lace-up shoe	CE, EN ISO 20347	O2, FO, SRC	352510
36771	87	35 - 48	uni6	lace-up shoe	CE, EN ISO 20347	O2, FO, SRC	352510



Art.-No.	Page	Size	Series	Description	Standard	Marking	Insole
36772	79	35 - 48	uni6	lace-up shoe	CE, EN ISO 20347	O2, FO, SRC	352510
36773	78	35 - 48	uni6	lace-up shoe	CE, EN ISO 20347	O2, FO, SRC	352510
36774	78	35 - 48	uni6	lace-up shoe	CE, EN ISO 20347	O2, FO, SRC	352510
36775	78	35 - 48	uni6	lace-up shoe	CE, EN ISO 20347	O2, FO, SRC	352510
36776	79	35 - 48	uni6	lace-up shoe	CE, EN ISO 20347	O2, FO, SRC	352510
36780	84	35 - 48	uni6	lace-up shoe	CE, EN ISO 20347	O2, FO, SRC	352510
36781	84	35 - 48	uni6	lace-up shoe	CE, EN ISO 20347	O2, FO, SRC	352510
36786	85	35 - 48	uni6	lace-up shoe	CE, EN ISO 20347	O2, FO, SRC	352510
36787	85	35 - 48	uni6	lace-up shoe	CE, EN ISO 20347	O2, FO, SRC	352510
36795	81	35 - 48	uni6	sandal, velcro	CE, EN ISO 20347	O1, FO, SRC	352510
36796	81	35 - 48	uni6	sandal, velcro	CE, EN ISO 20347	O1, FO, SRC	352510
36803	96	36 - 43	Reflexor Comfort	clog, foldable heel strap	CE, EN ISO 20347	OB, A, E, SRB	3584
36809	96	36 - 43	Reflexor Comfort	mule	CE, EN ISO 20347	OB, A, E, SRB	3584
36813	96	36 - 43	Reflexor Comfort	clog, foldable heel strap	CE, EN ISO 20347	OB, A, E, SRB	3572
36819	96	36 - 43	Reflexor Comfort	mule	CE, EN ISO 20347	OB, A, E, SRB	3572
36872	97	36 - 43	Reflexor Comfort	sandal	CE, EN ISO 20347	OB, A, E, SRB	3572
36874	97	36 - 43	Reflexor Comfort	sandal	CE, EN ISO 20347	OB, A, E, SRB	3584
36900	92	36 - 42	Reflexor	lace-up shoe	CE, EN ISO 20347	O1, SRB	3585/ 3567
36902	91	36 - 42	Reflexor	mule	CE, EN ISO 20347	OB, A, E, SRB	3585/ 3567
36903	92	36 - 42	Reflexor	clog, foldable heel strap	CE, EN ISO 20347	OB, A, E, SRB	3585/ 3567
36910	92	36 - 42	Reflexor	lace-up shoe	CE, EN ISO 20347	O1, SRB	3565/3568
36912	91	36 - 42	Reflexor	mule	CE, EN ISO 20347	OB, A, E, SRB	3565/ 3568
36913	92	36 - 42	Reflexor	clog, foldable heel strap	CE, EN ISO 20347	OB, A, E, SRB	3565/ 3568
37310	36	35 - 48	Dynamic	clog, foldable heel strap	CE, EN ISO 20347	OB, A, E, FO, SRC	352610
37312	36	35 - 48	Dynamic	clog, foldable heel strap	CE, EN ISO 20347	OB, A, E, FO, SRC	352610
37313	36	35 - 48	Dynamic	clog, foldable heel strap	CE, EN ISO 20347	OB, A, E, FO, SRC	352610
37315	36	35 - 48	Dynamic	clog, foldable heel strap	CE, EN ISO 20347	OB, A, E, FO, SRC	352610
37320	37	35 - 43	Dynamic	clog, fixed heel strap	CE, EN ISO 20347	OB, A, E, FO, SRC	352610
37326	38	35 - 48	Dynamic	clog, foldable heel strap	CE, EN ISO 20347	OB, A, E, FO, SRC	352610
37327	38	35 - 48	Dynamic	clog, foldable heel strap	CE, EN ISO 20347	OB, A, E, FO, SRC	352610
37328	38	35 - 48	Dynamic	clog, foldable heel strap	CE, EN ISO 20347	OB, A, E, FO, SRC	352610
37329	38	35 - 48	Dynamic	clog, foldable heel strap	CE, EN ISO 20347	OB, A, E, FO, SRC	352610
37331	42	35 - 48	Dynamic	clog, fixed heel strap	CE, EN ISO 20347	OB, A, E, FO, SRC	352610
37332	42	35 - 48	Dynamic	clog, fixed heel strap	CE, EN ISO 20347	OB, A, E, FO, SRC	352610
37333	42	35 - 48	Dynamic	clog, fixed heel strap	CE, EN ISO 20347	OB, A, E, FO, SRC	352610
37335	42	35 - 48	Dynamic	clog, fixed heel strap	CE, EN ISO 20347	OB, A, E, FO, SRC	352610
37341	43	35 - 48	Dynamic	clog, fixed heel strap	CE, EN ISO 20347	OB, A, E, FO, SRC	352610
37342	43	35 - 48	Dynamic	clog, fixed heel strap	CE, EN ISO 20347	OB, A, E, FO, SRC	352610
37343	43	35 - 48	Dynamic	clog, fixed heel strap	CE, EN ISO 20347	OB, A, E, FO, SRC	352610
37345	43	35 - 48	Dynamic	clog, fixed heel strap	CE, EN ISO 20347	OB, A, E, FO, SRC	352610
37351	37	35 - 48	Dynamic	clog, foldable heel strap	CE, EN ISO 20347	OB, A, E, FO, SRC	352610
37360	39	35 - 48	Dynamic	clog, fixed heel strap	CE, EN ISO 20347	OB, A, E, FO, SRC	352610
37361	39	35 - 48	Dynamic	clog, fixed heel strap	CE, EN ISO 20347	OB, A, E, FO, SRC	352610
37362	41	35 - 48	Dynamic	clog, fixed heel strap	CE, EN ISO 20347	OB, A, E, FO, SRC	352610
37363	41	35 - 48	Dynamic	clog, fixed heel strap	CE, EN ISO 20347	OB, A, E, FO, SRC	352610
37365	41	35 - 48	Dynamic	clog, fixed heel strap	CE, EN ISO 20347	OB, A, E, FO, SRC	352610
37366	41	35 - 48	Dynamic	clog, fixed heel strap	CE, EN ISO 20347	OB, A, E, FO, SRC	352610
37367	40	35 - 48	Dynamic	clog, fixed heel strap	CE, EN ISO 20347	OB, A, E, FO, SRC	352610
37368	40	35 - 48	Dynamic	clog, fixed heel strap	CE, EN ISO 20347	OB, A, E, FO, SRC	352610
37369	40	35 - 48	Dynamic	clog, fixed heel strap	CE, EN ISO 20347	OB, A, E, FO, SRC	352610
37370	32	35 - 48	Dynamic Flow	lace-up shoe	CE, EN ISO 20347	O1, FO, SRC	352630
37374	32	35 - 48	Dynamic Flow	low shoe, easy put on and off	CE, EN ISO 20347	O1, FO, SRC	352630
37375	33	35 - 48	Dynamic Flow	low shoe, easy put on and off	CE, EN ISO 20347	O1, FO, SRC	352630
37376	33	35 - 48	Dynamic Flow	low shoe, easy put on and off	CE, EN ISO 20347	O1, FO, SRC	352630



Art.-No.	Page	Size	Series	Description	Standard	Marking	Insole
37520	29	36 - 42	the Original plus	clog, foldable heel strap	CE, EN ISO 20347	OB, A, E, FO, SRC	-
37521	29	36 - 42	the Original plus	clog, foldable heel strap	CE, EN ISO 20347	OB, A, E, FO, SRC	-
37530	29	36 - 42	the Original plus	clog, foldable heel strap	CE, EN ISO 20347	OB, A, E, FO, SRC	-
37531	29	36 - 42	the Original plus	clog, foldable heel strap	CE, EN ISO 20347	OB, A, E, FO, SRC	-
37620	46	35 - 43	Easy	clog, fixed heel strap	CE, EN ISO 20347	OB, A, E, FO, SRC	352710
37621	46	35 - 43	Easy	clog, fixed heel strap	CE, EN ISO 20347	OB, A, E, FO, SRC	352710
37622	47	35 - 48	Easy	clog, fixed heel strap	CE, EN ISO 20347	OB, A, E, FO, SRC	352710
37623	47	35 - 43	Easy	clog, fixed heel strap	CE, EN ISO 20347	OB, A, E, FO, SRC	352710
37630	47	35 - 48	Easy	clog, foldable heel strap	CE, EN ISO 20347	OB, A, E, FO, SRC	352710
37631	47	35 - 48	Easy	clog, foldable heel strap	CE, EN ISO 20347	OB, A, E, FO, SRC	352710
38200	58	36 - 47	Arrow	clog, foldable heel strap	CE, EN ISO 20347	OB, A, FO, SRA	-
38202	58	48 - 51	Arrow	clog, foldable heel strap	CE, EN ISO 20347	OB, A, FO, SRA	-
38210	58	36 - 47	Arrow	clog, foldable heel strap	CE, EN ISO 20347	OB, A, FO, SRA	-
38212	58	48 - 51	Arrow	clog, foldable heel strap	CE, EN ISO 20347	OB, A, FO, SRA	-
38300	57	36 - 47	Arrow	clog, foldable heel strap	CE, EN ISO 20347	OB, A, FO, SRA	-
38302	57	48 - 51	Arrow	clog, foldable heel strap	CE, EN ISO 20347	OB, A, FO, SRA	-
38310	57	36 - 47	Arrow	clog, foldable heel strap	CE, EN ISO 20347	OB, A, FO, SRA	-
38312	57	48 - 51	Arrow	clog, foldable heel strap	CE, EN ISO 20347	OB, A, FO, SRA	-
38320	56	36 - 47	Arrow	clog, foldable heel strap	CE, EN ISO 20347	OB, A, FO, SRA	-
38322	56	48 - 51	Arrow	clog, foldable heel strap	CE, EN ISO 20347	OB, A, FO, SRA	-
38330	56	36 - 47	Arrow	clog, foldable heel strap	CE, EN ISO 20347	OB, A, FO, SRA	-
38332	56	48 - 51	Arrow	clog, foldable heel strap	CE, EN ISO 20347	OB, A, FO, SRA	-
38400	59	36 - 47	Arrow	clog, fixed heel strap	CE, EN ISO 20347	OB, A, FO, SRA	-
38600	59	36 - 47	Arrow	clog, fixed heel strap	CE, EN ISO 20347	OB, A, FO, SRA	-
38602	59	48 - 51	Arrow	clog, fixed heel strap	CE, EN ISO 20347	OB, A, FO, SRA	-
39600	110	35 - 46	Autoclavable	clog	CE, EN ISO 20347	OB, A, E, SRC	-
39610	110	35 - 46	Autoclavable	clog	CE, EN ISO 20347	OB, A, E, SRC	-
39620	111	35 - 46	Autoclavable	clog	CE, EN ISO 20347	OB, A, E, SRC	-
39630	111	35 - 46	Autoclavable	clog	CE, EN ISO 20347	OB, A, E, SRC	-
77020	19	35 - 47	the Original	clog, foldable heel strap	CE, EN ISO 20347	OB, E, FO, SRC	-
77021	18	35 - 47	the Original	clog, foldable heel strap	CE, EN ISO 20347	OB, E, FO, SRC	-
77022	16	35 - 43	the Original	clog, foldable heel strap	CE, EN ISO 20347	OB, E, FO, SRC	-
77023	16	35 - 47	the Original	clog, foldable heel strap	CE, EN ISO 20347	OB, E, FO, SRC	-
77024	16	35 - 43	the Original	clog, foldable heel strap	CE, EN ISO 20347	OB, E, FO, SRC	-
77030	19	35 - 47	the Original	clog, foldable heel strap	CE, EN ISO 20347	OB, E, FO, SRC	-
77031	18	35 - 47	the Original	clog, foldable heel strap	CE, EN ISO 20347	OB, E, FO, SRC	-
77032	16	35 - 43	the Original	clog, foldable heel strap	CE, EN ISO 20347	OB, E, FO, SRC	-
300119	98	35 - 43	Service	slip-on	CE, EN ISO 20347	O1, FO, SRC	-
300219	98	35 - 43	Service	slip-on	CE, EN ISO 20347	O1, FO, SRC	-
370110	113	100 cm		Set of lacets			
370118	113	80 cm		Set of lacets			
377022	16	35 - 43	the Original	clog, foldable heel strap	CE, EN ISO 20347	OB, E, FO, SRC	-
377023	16	35 - 47	the Original	clog, foldable heel strap	CE, EN ISO 20347	OB, E, FO, SRC	-
377024	16	35 - 43	the Original	clog, foldable heel strap	CE, EN ISO 20347	OB, E, FO, SRC	-
377032	16	35 - 43	the Original	clog, foldable heel strap	CE, EN ISO 20347	OB, E, FO, SRC	-
711100	74	35 - 48	x-light	lace-up shoe	CE, EN ISO 20347	O2, FO, SRC	351610
711101	74	35 - 48	x-light	lace-up shoe	CE, EN ISO 20347	O2, FO, SRC	351610
711124	72	35 - 48	x-light	lace-up shoe	CE, EN ISO 20347	O2, FO, SRC	351610
711126	75	35 - 48	x-light	lace-up shoe	CE, EN ISO 20347	O2, FO, SRC	351610
711127	75	35 - 48	x-light	lace-up shoe	CE, EN ISO 20347	O2, FO, SRC	351610
711128	71	35 - 48	x-light	slip-on	CE, EN ISO 20347	O2, FO, SRC	351610
711129	71	35 - 48	x-light	slip-on	CE, EN ISO 20347	O2, FO, SRC	351610
711130	70	35 - 48	x-light	clog, fixed heel strap	CE, EN ISO 20347	OB, FO, SRC	351710



Art.-No.	Page	Size	Series	Description	Standard	Marking	Insole
711131	71	35 - 48	x-light	sandal, velcro	CE, EN ISO 20347	O1, FO, SRC	351610
711132	72	35 - 48	x-light	slip-on	CE, EN ISO 20347	O2, FO, SRC	351610
711133	75	35 - 48	x-light	lace-up shoe	CE, EN ISO 20347	O2, FO, SRC	351610
711135	70	35 - 48	x-light	clog, fixed heel strap	CE, EN ISO 20347	OB, FO, SRC	351710
711136	71	35 - 48	x-light	sandal, velcro	CE, EN ISO 20347	O1, FO, SRC	351610
711137	72	35 - 48	x-light	slip-on	CE, EN ISO 20347	O2, FO, SRC	351610
711138	75	35 - 48	x-light	lace-up shoe	CE, EN ISO 20347	O2, FO, SRC	351610
711141	70	35 - 48	x-light	clog, foldable heel strap	CE, EN ISO 20347	OB, FO, SRC	351710
711142	70	35 - 48	x-light	clog, foldable heel strap	CE, EN ISO 20347	OB, FO, SRC	351710
711146	73	35 - 48	x-light	low shoe, velcro	CE, EN ISO 20347	O2, FO, SRC	351610
711147	73	35 - 48	x-light	low shoe, velcro	CE, EN ISO 20347	O2, FO, SRC	351610
711150	74	35 - 48	x-light	lace-up shoe	CE, EN ISO 20347	O1, FO, SRC	351610
711160	74	35 - 48	x-light	lace-up shoe	CE, EN ISO 20347	O2, FO, SRC	351610
970111	53	36 - 47	Rubber	clog, fixed heel strap	CE, EN ISO 20347	OB, A, FO, SRC	-
970119	53	36 - 47	Rubber	clog, fixed heel strap	CE, EN ISO 20347	OB, A, FO, SRC	-
3970111	53	36 - 47	Rubber	clog, fixed heel strap	CE, EN ISO 20347	OB, A, FO, SRC	-
3970119	53	36 - 47	Rubber	clog, fixed heel strap	CE, EN ISO 20347	OB, A, FO, SRC	-
7131100	74	35 - 48	x-light	lace-up shoe	CE, EN ISO 20347	O2, FO, SRC	351610
7131101	74	35 - 48	x-light	lace-up shoe	CE, EN ISO 20347	O2, FO, SRC	351610
7131124	72	35 - 48	x-light	lace-up shoe	CE, EN ISO 20347	O2, FO, SRC	351610
7131126	75	35 - 48	x-light	lace-up shoe	CE, EN ISO 20347	O2, FO, SRC	351610
7131127	75	35 - 48	x-light	lace-up shoe	CE, EN ISO 20347	O2, FO, SRC	351610
7131128	71	35 - 48	x-light	slip-on	CE, EN ISO 20347	O2, FO, SRC	351610
7131129	71	35 - 48	x-light	slip-on	CE, EN ISO 20347	O2, FO, SRC	351610
7131130	70	35 - 48	x-light	clog, fixed heel strap	CE, EN ISO 20347	OB, FO, SRC	351710
7131131	71	35 - 48	x-light	sandal, velcro	CE, EN ISO 20347	O1, FO, SRC	351610
7131132	72	35 - 48	x-light	slip-on	CE, EN ISO 20347	O2, FO, SRC	351610
7131133	75	35 - 48	x-light	lace-up shoe	CE, EN ISO 20347	O2, FO, SRC	351610
7131135	70	35 - 48	x-light	clog, fixed heel strap	CE, EN ISO 20347	OB, FO, SRC	351710
7131136	71	35 - 48	x-light	sandal, velcro	CE, EN ISO 20347	O1, FO, SRC	351610
7131137	72	35 - 48	x-light	slip-on	CE, EN ISO 20347	O2, FO, SRC	351610
7131138	75	35 - 48	x-light	lace-up shoe	CE, EN ISO 20347	O2, FO, SRC	351610
7131141	70	35 - 48	x-light	clog, foldable heel strap	CE, EN ISO 20347	OB, FO, SRC	351710
7131142	70	35 - 48	x-light	clog, foldable heel strap	CE, EN ISO 20347	OB, FO, SRC	351710
7131146	73	35 - 48	x-light	low shoe, velcro	CE, EN ISO 20347	O2, FO, SRC	351610
7131147	73	35 - 48	x-light	low shoe, velcro	CE, EN ISO 20347	O2, FO, SRC	351610
7131150	74	35 - 48	x-light	lace-up shoe	CE, EN ISO 20347	O1, FO, SRC	351610
7131156	73	35 - 48	x-light	lace-up shoe	CE, EN ISO 20347	O1, FO, SRC	351610
7131158	73	35 - 48	x-light	lace-up shoe	CE, EN ISO 20347	O1, FO, SRC	351610
7131160	74	35 - 48	x-light	lace-up shoe	CE, EN ISO 20347	O2, FO, SRC	351610

NOTE

Insoles complete
information on
page 112 & 113.





ICONS



ESD



METAL FREE



SUITABLE FOR KITCHENS



REPLACEABLE INSOLE



BREATHABLE TEXTILE



HEEL AND FOOT LIFT



WASHABLE AT 30° C



WASHABLE AT 60° C



AUTOCLAVABLE



HACCP-COMPLIANT



IDENTIFICATION ACCORDING TO STANDARD



CUSHIONING EFFECT



ORTHOPEDIC INSOLES



SUITABLE FOR SERVICE STAFF

SIZE COMPARISON TABLE

D Mondo- point RS mm	D/ F paris point	GB english size	USA	
			women	men
210	34	2	3,5	2,5
217	35	2,5	4,0	3,0
225	36	3,5	5,0	4,0
232	37	4	6,0	4,5
240	38	5	6,5	5,5
247	39	6	7,5	6,0
255	40	6,5	8,0	7,0
262	41	7,5	9,0	7,5
270	42	8	9,5	8,5
277	43	9	10,5	9,5
285	44	9,5	11,5	10,0
292	45	10,5	12,0	11,0
300	46	11,5	13,0	11,5
307	47	12	13,5	12,5
315	48	13	14,5	13,0

WWW.ABEBA.COM



NOTES



A series of horizontal dotted lines for writing notes.



Kontaktujte nás

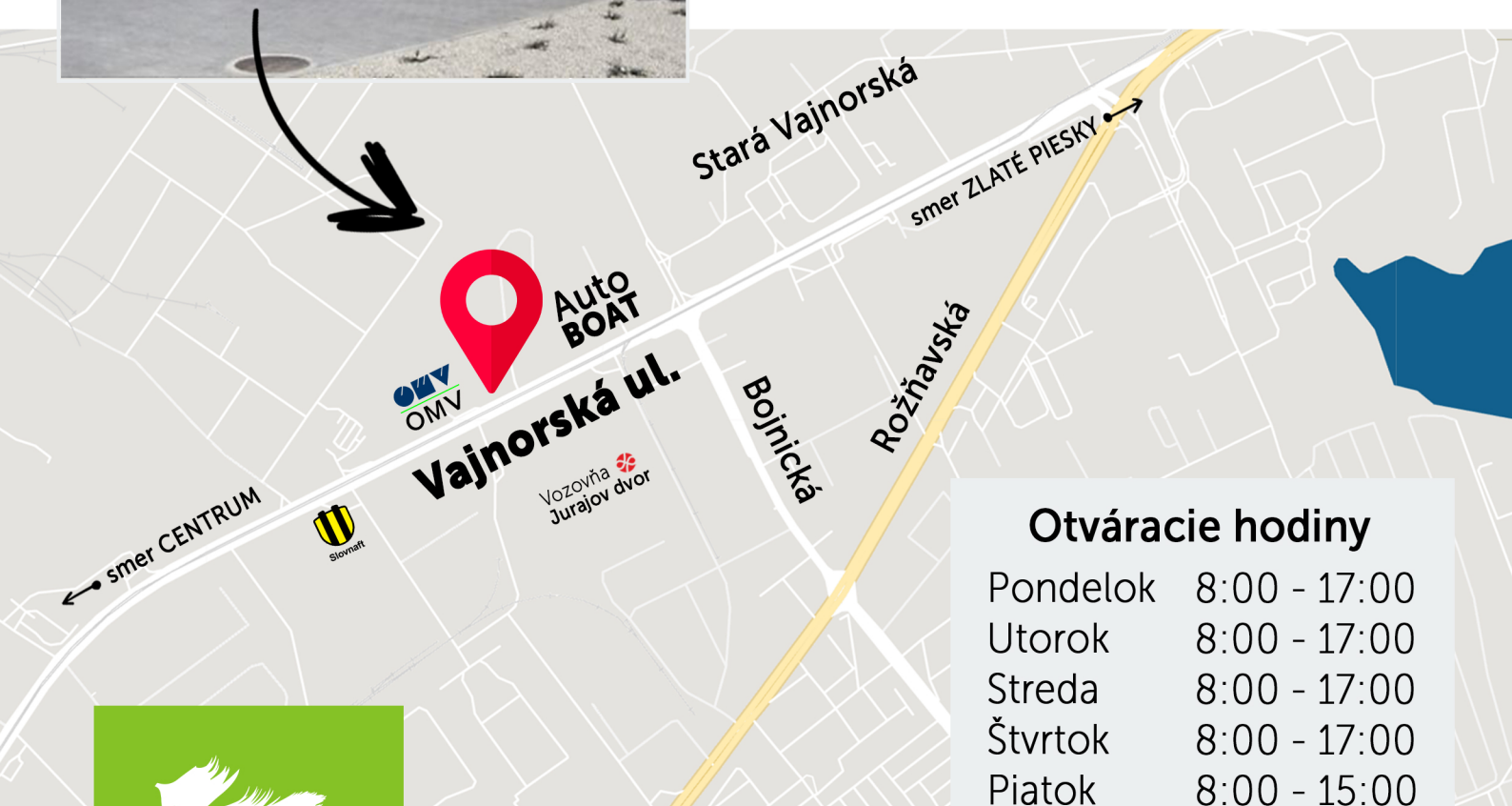
CENTRÁLA

Predajňa / Sklad

Vajnorská 131/A,
Bratislava 831 04



tel.: 02/44458685
tel/fax: 02/44458684
e-mail: lubica@lubica.eu
web: www.lubica.sk



Otváracie hodiny

Pondelok	8:00 - 17:00
Utorok	8:00 - 17:00
Streda	8:00 - 17:00
Štvrtok	8:00 - 17:00
Piatok	8:00 - 15:00
Sobota	Zatvorené
Nedeľa	Zatvorené

lubica

Viac informácií o produktoch **nájdete na www.lubica.sk**