



THE POWER OF PERFORMANCE



**SAFETY SHOES  
& WORKWEAR**

**2025** CATALOGUE / ENG



sparco

THE POWER OF PERFORMANCE

WE ARE

ESG CERTIFIED



SUSTAINABLE  
DEVELOPMENT

GOALS

ENVIRONMENTAL COMMITMENT

/ PIONEERS IN WELFARE



SOCIAL AND GOVERNANCE RESPONSIBILITY

/ PROTAGONISTS IN GREEN PRODUCTION



sparco





THE POWER OF PERFORMANCE

COMFORT  
AND SAFETY  
RUN WITH A NEW  
**IMPULSE**



**IMPULSE** LINE

THE SAFETY SHOE THAT **MAKES YOU FEEL BETTER.**

**ESD - SIPS**  
**SR - FO - HRO**

CE EN ISO 20345:2022

SPARCOTEAMWORK.COM



## SAFETY AND TECHNOLOGY IN MOTORSPORT AND AT WORK



Sparco Teamwork is the collection of shoes and workwear where safety, lightness and design draw inspiration from the motorsport experience, translating into a work key with the same goal: to guarantee maximum performance.

## BEST FORMULA1 TEAMS CHOOSE SPARCO



**McLaren**  
FORMULA 1 TEAM

**sparco**

TECHNICAL SUPPLIER





**WELCOME  
TO THE  
SPARCO  
WORLD.**

## INDEX

### SAFETY SHOES AND WORKWEAR



P. 10 - 59  
**SAFETY AND OCCUPATIONAL SHOES**



P. 60 - 85  
**WORKWEAR**



P. 86 - 89  
**WORK GLOVES**



P. 90 - 93  
**POP TOOLS**



P. 94 - 97  
**OUTLET**



# TECHNOLOGY

SPARCO TEAMWORK shoes are developed using the best technologies in terms of soles and midsoles. The aim is to optimize the exertion produced in walking by the forefoot where the greatest stresses for the user are concentrated, thus returning **70%** of the energy produced. This benefit offers advantages in using SPARCO TEAMWORK footwear, such as:



- less fatigue at the end of the day, thus improving reflexes and attention to the dangers of slipping and tripping injuries;
- less exertion in walking;
- less strain on the back and spine;
- muscles relaxation.

## TWISTTECH

Segmented profiles to facilitate bending as well as the flow of liquids.

Sculpted lugs for greater slip resistance.

Segmented profiles for self-cleaning action and outflow of liquids.

**SR**

IMPULSE S1PS

IMPULSE S3S

IMPULSE COLLECTIONS

The specific Zigzag design of the TWIST TECH tread promotes flexion, guaranteeing maximum grip in every situation.

## NEW W-FLEX

Sculpted profiles to ensure maximum grip in any conditions.

Central studs with heel carving for maximum flexibility and grip.

Specific design of the central W studs to ensure optimal drainage of liquids and greater grip.

**SR**

TRACTION S1PS

TRACTION S3S

The w-shaped design of the w-flex tread benefits flexion, Guaranteeing maximum grip in any situation.

## FLEXGRIP+

Laminar profiles for greater slipping resistance.

Profiles engraved for a better grip on stairs (LG - heel height > 10 mm).

Laminar profile to increase grip for SR test.

**SR**

INDY-R

INDY

INDY-E

Super light sole in dual density polyurethane with special design of the lugs which guarantee maximum grip in all flexion conditions.

## CROSSGRIP

Laminar engraving for greater slipping resistance.

Large side drains for water, mud and debris.

Anti-fatigue lug to increase energy absorption.

Laminar engraving for maximum grip.

**SR**

ALLROAD

ALLROAD-H

Ultralight sole with PHYLON midsole and CROSSGRIP rubber tread with lugs that guarantee a strong grip even on particularly uneven surfaces.

## MULTIGRIP

Self-cleaning profiles for the drainage of liquids.

Sculpted lugs for greater slip resistance.

Self-cleaning profiles for the outflow of liquids.

**SR**

GYMKHANA

GYMKHANA H

GYMKHANA COLLECTIONS

Ultralight sole with shock absorbing effect provided by a thick ultralight EVA midsole and MULTIGRIP RUBBER tread.

## STREETTECH

Self-cleaning lugs.

Profiles engraved for a better grip on stairs.

Anti-fatigue cell to increase energy absorption.

**SR**

HORIZON

HORIZON-H

TARGA

TARGA-H

Ultralight dual-density polyurethane sole designed to facilitate dynamic use and move safely in all situations.

## DYNATECH

Self-cleaning lugs.

Profiles engraved for enhanced grip on stairs.

Anti-fatigue cell to increase energy absorption.

**SR**

ARCTIC

Lightweight dual density polyurethane sole with dynamic drain design to facilitate the outflow of liquids, always guaranteeing maximum grip.

## R-FLEX

Laminar profiles for greater slipping resistance.

Profiles engraved for a better grip on stairs.

Laminar profile to increase grip.

**SR**

PRACTICE

NITRO

Ultralight sole in single-density polyurethane designed for intensive use where the foot bends frequently.

## NEW PRISM FLEX+

Closely spaced tread blocks for maximum grip on oily surfaces.

Engraved crampons for greater grip on stairs.

Sharp-edged dowels for greater grip on oily surfaces.

**SR**

GOODWOOD S7S

GOODWOOD 06

Ultra-resistant PU sole and HRO rubber tread , PRISM-FLE + texture which allows for high grip in all support conditions.

## NEW WAVE TECH

Lamellar engraving for greater slip resistance.

Central studs with heel carving for maximum flexibility and grip.

Self-cleaning profiles for the outflow of liquids.

**SR**

S-PARK

S-PARK MARTINI RCING

Superlight sole with phylon midsole and HRO rubber tread. Suitable for any use, even for outdoor leisure.





# SAFETY SHOES





# LINE IMPULSE S1PS

RUNNING STYLE SAFETY FOOTWEAR. **SEAMLESS UPPER**  
**MADE OF ULTRA-BREATHABLE 3D FABRIC**, ANTI-ABRASION  
TPU REINFORCEMENTS AND 3D HF DETAILS.  
EVA MIDSOLE AND **"FO+HRO" RUBBER TREAD**.  
LIGHTWEIGHT AND SPORTY, TO ENHANCE YOUR DYNAMISM.

*THE SUPER COMFORT EVA MIDSOLE PROVIDES AN UNMATCHED CUSHIONING EFFECT, INCREASING THE ELASTIC ENERGY RETURNED AND REDUCING FATIGUE AT THE END OF THE DAY. IMPULSE: THE WORK SHOE THAT MAKES YOU FEEL BETTER.*



THE SPECIFIC ZIGZAG DESIGN OF THE TWIST TECH TREAD PROMOTES FLEXION, GUARANTEEING MAXIMUM GRIP IN ANY SITUATION.



DGUV 112-191 COMPLIANT  
(Optional and interchangeable  
orthopaedic insoles BY SECOSOL®).

P. 100

- 01 Segmented profiles for self-cleaning action and profiles the outflow of liquids.
- 02 Sculpted lugs for greater slip resistance.
- 03 Segmented profiles to facilitate bending as well as the flow of liquids.

- PS Perforation resistance (min.1100 N & each single value >950 N) non-metal insert: d=3.0mm Conical Nail.
- SR Slip resistance - on ceramic tile floor with glycerine.
- HRO Contact Heat Resistance (300 °C. for 60").

# IMPULSE S1PS LINE

WILLEN **ESD** S1PS SR FO HRO

07545..BMVF



- UPPER:** seamless breathable micro-perforated 3D fabric, anti-abrasion TPU reinforcements and 3D HF details. Additional 2nd color laces included.
- LINING:** breathable micro-perforated 3D fabric.
- REMOVABLE INSOLE:** antistatic PU low density with ergonomic thermoforming.
- ANTI-PERFORATION INSOLE:** zero-perforation ultralight textile fiber (PS).
- TOE CAP:** non magnetic fiberglass, insulating, resistant to 200J.
- ANTI-SLIP ANTI-STATIC SOLE:** super-comfortable EVA midsole, high energy absorption and FO+HRO nitrile rubber tread.
- SIZES:** 36-48 (UK 3½-13).

LUTON **ESD** S1PS SR FO HRO

07545..NRGF



- UPPER:** seamless breathable micro-perforated 3D fabric, anti-abrasion TPU reinforcements and 3D HF details. Additional 2nd color laces included.
- LINING:** breathable micro-perforated 3D fabric.
- REMOVABLE INSOLE:** antistatic PU low density with ergonomic thermoforming.
- ANTI-PERFORATION INSOLE:** zero-perforation ultralight textile fiber (PS).
- TOE CAP:** non magnetic fiberglass, insulating, resistant to 200J.
- ANTI-SLIP ANTI-STATIC SOLE:** super-comfortable EVA midsole, high energy absorption and FO+HRO nitrile rubber tread.
- SIZES:** 36-48 (UK 3½-13).

LINFORD **ESD** S1PS SR FO HRO

07545..NR



NEW



- UPPER:** seamless breathable micro-perforated 3D fabric, anti-abrasion TPU reinforcements and 3D HF details. Additional 2nd color laces included.
- LINING:** breathable micro-perforated 3D fabric.
- REMOVABLE INSOLE:** antistatic PU low density with ergonomic thermoforming.
- ANTI-PERFORATION INSOLE:** zero-perforation ultralight textile fiber (PS).
- TOE CAP:** non magnetic fiberglass, insulating, resistant to 200J.
- ANTI-SLIP ANTI-STATIC SOLE:** super-comfortable EVA midsole, high energy absorption and FO+HRO nitrile rubber tread.
- SIZES:** 36-48 (UK 3½-13).





# IMPULSE S3S

RUNNING-STYLE SAFETY FOOTWEAR.

**SEAMLESS UPPER MADE OF WATER-RESISTANT RIP-STOP FABRIC,**  
**ANTI-ABRASION TPU REINFORCEMENTS AND 3D HF DETAILS.**  
**EVA MIDSOLE AND "FO+HRO" RUBBER TREAD. LIGHTWEIGHT,**  
**VERSATILE AND RESISTANT, THEY ARE READY FOR ANY CHALLENGE.**

*THE SUPER COMFORT EVA MIDSOLE PROVIDES AN UNMATCHED CUSHIONING EFFECT, INCREASING THE ELASTIC ENERGY RETURNED AND REDUCING FATIGUE AT THE END OF THE DAY. IMPULSE: THE WORK SHOE THAT MAKES YOU FEEL BETTER.*



- 01 Segmented profiles for self-cleaning action and profiles the outflow of liquids.
- 02 Sculpted lugs for greater slip resistance.
- 03 Segmented profiles to facilitate bending as well as the flow of liquids.

**THE SPECIFIC ZIGZAG DESIGN OF THE TWIST TECH TREAD PROMOTES FLEXION, GUARANTEEING MAXIMUM GRIP IN ANY SITUATION.**



CE EN ISO 20345:2022

- PS** Perforation resistance (min.1100 N & each single value >950 N) non-metal insert: d=3.0mm Conical Nail.
- SR** Slip resistance - on ceramic tile floor with glycerine.
- HRO** Contact Heat Resistance (300 °C. for 60").

P. 100



## IMPULSE S3S LINE

LUCAS **ESD** S3S SR FO HRO

BTB0013B0E54..



**NEW**



- UPPER:** seamless water-resistant RIP-STOP fabric, anti-abrasion TPU reinforcements and 3D HF details. Additional 2nd color laces included.
- LINING:** breathable micro-perforated 3D fabric..
- REMOVABLE INSOLE:** antistatic PU low density with ergonomic thermoforming.
- ANTI-PERFORATION INSOLE:** zero-perforation ultralight textile fiber (PS).
- TOE CAP:** non magnetic fiberglass, insulating, resistant to 200J.
- ANTI-SLIP ANTI-STATIC SOLE:** super-comfortable EVA midsole, high energy absorption and FO+HRO nitrile rubber tread.
- SIZES:** 36-48 (UK 3½-13).

GEORGE **ESD** S3S SR FO HRO

BTB0013B0N23..



**NEW**



- UPPER:** seamless water-resistant RIP-STOP fabric, anti-abrasion TPU reinforcements and 3D HF details. Additional 2nd color laces included.
- LINING:** breathable micro-perforated 3D fabric..
- REMOVABLE INSOLE:** antistatic PU low density with ergonomic thermoforming.
- ANTI-PERFORATION INSOLE:** zero-perforation ultralight textile fiber (PS).
- TOE CAP:** non magnetic fiberglass, insulating, resistant to 200J.
- ANTI-SLIP ANTI-STATIC SOLE:** super-comfortable EVA midsole, high energy absorption and FO+HRO nitrile rubber tread.
- SIZES:** 36-48 (UK 3½-13).

CHRIS **ESD** S3S SR FO HRO

BTB0013B0K11..



**NEW**



- UPPER:** seamless water-resistant RIP-STOP fabric, anti-abrasion TPU reinforcements and 3D HF details. Additional 2nd color laces included.
- LINING:** breathable micro-perforated 3D fabric..
- REMOVABLE INSOLE:** antistatic PU low density with ergonomic thermoforming.
- ANTI-PERFORATION INSOLE:** zero-perforation ultralight textile fiber (PS).
- TOE CAP:** non magnetic fiberglass, insulating, resistant to 200J.
- ANTI-SLIP ANTI-STATIC SOLE:** super-comfortable EVA midsole, high energy absorption and FO+HRO nitrile rubber tread.
- SIZES:** 36-48 (UK 3½-13).





**NEW** CAPSULE COLLECTIONS

# IMPULSE

CAPSULE LINE OF RUNNING-STYLE **SAFETY FOOTWEAR** WITH OFFICIAL **MARTINI RACING AND ORACLE RED BULL RACING LIVERIES**. SEAMLESS UPPER IN 3D ULTRA-BREATHABLE OR WATER-REPELLENT RIP-STOP FABRIC, ANTI-ABRASION TPU REINFORCEMENTS AND 3D HF DETAILS. EVA MIDSOLE AND “**FO+HRO**” RUBBER TREAD. LIGHTWEIGHT AND EXCLUSIVE, FOR THOSE LOOKING FOR UNIQUE STYLE AND PERFORMANCE.

**THE SUPER COMFORT EVA MIDSOLE PROVIDES AN UNMATCHED CUSHIONING EFFECT, INCREASING THE ELASTIC ENERGY RETURNED AND REDUCING FATIGUE AT THE END OF THE DAY. IMPULSE: THE WORK SHOE THAT MAKES YOU FEEL BETTER.**



THE SPECIFIC ZIGZAG DESIGN OF THE TWIST TECH TREAD PROMOTES FLEXION, GUARANTEEING MAXIMUM GRIP IN ANY SITUATION.



**DGUV 112-191 COMPLIANT**  
(Optional and interchangeable orthopaedic insoles BY SECOSOL®).

**CE EN ISO 20345:2022**

- 01** Segmented profiles for self-cleaning action and profiles the outflow of liquids.
- 02** Sculpted lugs for greater slip resistance.
- 03** Segmented profiles to facilitate bending as well as the flow of liquids.

- PS** Perforation resistance (min.1100 N & each single value >950 N) non-metal insert: d=3.0mm Conical Nail.
- SR** Slip resistance - on ceramic tile floor with glycerine.
- HRO** Contact Heat Resistance (300 °C. for 60’’).

P. 100



# IMPULSE CAPSULE COLLECTIONS

CORSICA **ESD** S1PS SR FO HRO

07545MR..BMRS



**NEW**



- UPPER:** seamless breathable micro-perforated 3D fabric, anti-abrasion TPU reinforcements and 3D HF details. Additional 2nd color laces included.
- LINING:** breathable micro-perforated 3D fabric.
- REMOVABLE INSOLE:** antistatic PU low density with ergonomic thermoforming.
- ANTI-PERFORATION INSOLE:** zero-perforation ultralight textile fiber (PS).
- TOE CAP:** non magnetic fiberglass, insulating, resistant to 200J.
- ANTI-SLIP ANTI-STATIC SOLE:** super-comfortable EVA midsole, high energy absorption and FO+HRO nitrile rubber tread.
- SIZES:** 36-48 (UK 3½-13).

MILTON **ESD** S1PS SR FO HRO

07545RB..BM



- UPPER:** seamless breathable micro-perforated 3D fabric, anti-abrasion TPU reinforcements and 3D HF details. Additional 2nd color laces included.
- LINING:** breathable micro-perforated 3D fabric.
- REMOVABLE INSOLE:** antistatic PU low density with ergonomic thermoforming.
- ANTI-PERFORATION INSOLE:** zero-perforation ultralight textile fiber (PS).
- TOE CAP:** non magnetic fiberglass, insulating, resistant to 200J.
- ANTI-SLIP ANTI-STATIC SOLE:** super-comfortable EVA midsole, high energy absorption and FO+HRO nitrile rubber tread.
- SIZES:** 36-48 (UK 3½-13).

KEYNES **ESD** S3S SR FO HRO

BTB0016RON31..



**NEW**



- UPPER:** seamless water-resistant RIP-STOP fabric, anti-abrasion TPU reinforcements and 3D HF details. Additional 2nd color laces included.
- LINING:** breathable micro-perforated 3D fabric..
- REMOVABLE INSOLE:** antistatic PU low density with ergonomic thermoforming.
- ANTI-PERFORATION INSOLE:** zero-perforation ultralight textile fiber (PS).
- TOE CAP:** non magnetic fiberglass, insulating, resistant to 200J.
- ANTI-SLIP ANTI-STATIC SOLE:** super-comfortable EVA midsole, high energy absorption and FO+HRO nitrile rubber tread.
- SIZES:** 36-48 (UK 3½-13).



# NEW LINE TRACTION

SPORTS-STYLE **SAFETY FOOTWEAR**, COMPLIANT WITH THE NEW **EN ISO 20345:2022+A1:2024**. **REFLECTIVE ANTI-ABRASION FABRIC UPPER**, EVA MIDSOLE AND "FO+HRO" RUBBER TREAD. FLEXIBLE, LIGHTWEIGHT AND SPORTY, FOR THOSE LOOKING FOR SAFETY AND PERFORMANCE.



THE W-SHAPED DESIGN OF THE W-FLEX TREAD BENEFITS FLEXION, GUARANTEEING MAXIMUM GRIP IN ANY SITUATION.



EN ISO 20345:2022+A1:2024

- 01 Sculpted profiles to ensure maximum grip in any conditions.
- 02 Central studs with heel carving for maximum flexibility and grip.
- 03 Specific design of the central W studs to ensure optimal drainage of liquids and greater grip.

- PS Perforation resistance (min.1100 N & each single value >950 N) non-metal insert: d=3.0mm Conical Nail.
- SR Slip resistance - on ceramic tile floor with glycerine.
- HRO Contact Heat Resistance (300 °C. for 60").

P. 100

## SUZUKA ESD S1PS SR FO HRO

BTB0002BOK05..



NEW



- UPPER:** reflective anti-abrasion fabric, TPU reinforcements and 3D HF details.
- LINING:** breathable micro-perforated 3D fabric.
- REMOVABLE INSOLE:** antistatic PU low density with ergonomic thermoforming.
- ANTI-PERFORATION INSOLE:** zero-perforation ultralight textile fiber (PS).
- TOE CAP:** non magnetic fiberglass, insulating, resistant to 200J.
- ANTI-SLIP ANTI-STATIC SOLE:** super-comfortable EVA midsole, high energy absorption and FO+HRO nitrile rubber tread.
- SIZES:** 36-48 (UK 3½-13).

## FUJI ESD S1PS SR FO HRO

BTB0002BOK01..



NEW



- UPPER:** reflective anti-abrasion fabric, TPU reinforcements and 3D HF details.
- LINING:** breathable micro-perforated 3D fabric.
- REMOVABLE INSOLE:** antistatic PU low density with ergonomic thermoforming.
- ANTI-PERFORATION INSOLE:** zero-perforation ultralight textile fiber (PS).
- TOE CAP:** non magnetic fiberglass, insulating, resistant to 200J.
- ANTI-SLIP ANTI-STATIC SOLE:** super-comfortable EVA midsole, high energy absorption and FO+HRO nitrile rubber tread.
- SIZES:** 36-48 (UK 3½-13).

## SANYO ESD S1PS SR FO HRO

BTB0002BOK15..



NEW



- UPPER:** reflective anti-abrasion fabric, TPU reinforcements and 3D HF details.
- LINING:** breathable micro-perforated 3D fabric.
- REMOVABLE INSOLE:** antistatic PU low density with ergonomic thermoforming.
- ANTI-PERFORATION INSOLE:** zero-perforation ultralight textile fiber (PS).
- TOE CAP:** non magnetic fiberglass, insulating, resistant to 200J.
- ANTI-SLIP ANTI-STATIC SOLE:** super-comfortable EVA midsole, high energy absorption and FO+HRO nitrile rubber tread.
- SIZES:** 36-48 (UK 3½-13).

## ASAN ESD S3S SR FO HRO

BTB0018BOK13..



NEW



- UPPER:** reflective and water repellent anti-abrasion fabric.
- LINING:** breathable micro-perforated 3D fabric.
- REMOVABLE INSOLE:** antistatic PU low density with ergonomic thermoforming.
- ANTI-PERFORATION INSOLE:** zero-perforation ultralight textile fiber (PS).
- TOE CAP:** non magnetic fiberglass, insulating, resistant to 200J.
- ANTI-SLIP ANTI-STATIC SOLE:** super-comfortable EVA midsole, high energy absorption and FO+HRO nitrile rubber tread.
- SIZES:** 36-48 (UK 3½-13).



# LINE INDY-R SIPS

**SAFETY FOOTWEAR MADE OF ULTRA-BREATHABLE PERFORATED MESH, SUEDE AND MICROFIBER REINFORCEMENTS. "FLEXGRIP+" BI-DENSITY PU SOLE WITH SPECIAL HEEL COMPLIANT WITH THE REQUIREMENTS FOR LADDER GRIP (LG). COMFORTABLE AND ULTRA-BREATHABLE TO ALWAYS WORK EASILY.**



- 01** Laminar profile to increase grip for SR test.
- 02** Profiles engraved for a better grip on stairs (LG - heelheight > 10 mm).
- 03** Laminar profiles for greater slipping resistance.

**"FLEXGRIP+" BI-DENSITY PU SOLE WITH SPECIAL HEEL COMPLIANT WITH THE REQUIREMENTS FOR LADDER GRIP (LG).**



CE EN ISO 20345:2022

- PS** Perforation resistance (min.1100 N & each single value >950 N) non-metal insert: d=3.0mm Conical Nail.
- SR** Slip resistance - on ceramic tile floor with glycerine.
- LG** Ladder grip.

P. 100



**SONOMA ESD SIPS SR FO LG**

**07539..GSVF**



- UPPER:** ultra-breathable perforated mesh, suede and microfiber reinforcements. Additional 2nd color laces included.
- LINING:** breathable micro-perforated 3D fabric.
- REMOVABLE INSOLE:** antistatic PU with ergonomic thermoforming.
- ANTI-PERFORATION INSOLE:** zero-perforation ultralight textile fiber (PS).
- TOE CAP:** non magnetic fiberglass, insulating, resistant to 200J.
- ANTI-SLIP ANTI-STATIC SOLE:** PU dual density with absorption of energy on the heel + LG.
- SIZES:** 35-48 (UK 2½-13).

**PATO ESD SIPS SR FO LG**

**07539..GRAF**



- UPPER:** ultra-breathable perforated mesh, suede and microfiber reinforcements. Additional 2nd color laces included.
- LINING:** breathable micro-perforated 3D fabric.
- REMOVABLE INSOLE:** antistatic PU with ergonomic thermoforming.
- ANTI-PERFORATION INSOLE:** zero-perforation ultralight textile fiber (PS).
- TOE CAP:** non magnetic fiberglass, insulating, resistant to 200J.
- ANTI-SLIP ANTI-STATIC SOLE:** PU dual density with absorption of energy on the heel + LG.
- SIZES:** 35-48 (UK 2½-13).



# LINE INDY S1PS

**SAFETY FOOTWEAR MADE OF FINE PERFORATED SUEDE LEATHER, "FLEXGRIP+" BI-DENSITY PU SOLE WITH SPECIAL HEEL DESIGN COMPLIANT TO THE REQUIREMENTS FOR LADDER GRIP (LG). COMFORTABLE AND BREATHABLE TO WORK EASILY EVERYDAY.**



**"FLEXGRIP+" BI-DENSITY PU SOLE WITH SPECIAL HEEL COMPLIANT WITH THE REQUIREMENTS FOR LADDER GRIP (LG).**



**DGUV 112-191 COMPLIANT**  
(Optional and interchangeable orthopaedic insoles BY SECOSOL®).

**CE EN ISO 20345:2022**

- 01** Laminar profile to increase grip for SR test.
- 02** Profiles engraved for a better grip on stairs (LG - heelheight > 10 mm).
- 03** Laminar profiles for greater slipping resistance.

**PS** Perforation resistance (min.1100 N & each single value >950 N) non-metal insert: d=3.0mm Conical Nail.

**SR** Slip resistance - on ceramic tile floor with glycerine.

**LG** Ladder grip.

**P. 100**

## FELIX **ESD** S1PS SR FO LG

**07538..GRVF**



**UPPER:**  
perforated suede and microfiber reinforcements.  
Additional 2nd color laces included.

**LINING:**  
breathable micro-perforated 3D fabric.

**REMOVABLE INSOLE:**  
antistatic PU with ergonomic thermoforming.

**ANTI-PERFORATION INSOLE:**  
zero-perforation ultralight textile fiber (PS).

**TOE CAP:**  
non magnetic fiberglass,  
insulating, resistant to 200J.

**ANTI-SLIP ANTI-STATIC SOLE:**  
PU dual density with absorption  
of energy on the heel + LG.

**SIZES:**  
35-48 (UK 2½-13).

## COLTON **ESD** S1PS SR FO LG

**07538..TAGI**



**UPPER:**  
perforated suede and microfiber reinforcements.  
Additional 2nd color laces included.

**LINING:**  
breathable micro-perforated 3D fabric.

**REMOVABLE INSOLE:**  
antistatic PU with ergonomic thermoforming.

**ANTI-PERFORATION INSOLE:**  
zero-perforation ultralight textile fiber (PS).

**TOE CAP:**  
non magnetic fiberglass,  
insulating, resistant to 200J.

**ANTI-SLIP ANTI-STATIC SOLE:**  
PU dual density with absorption  
of energy on the heel + LG.

**SIZES:**  
35-48 (UK 2½-13).

## TEXAS **ESD** S1PS SR FO LG

**07538..GSGF**



**UPPER:**  
perforated suede and microfiber reinforcements.  
Additional 2nd color laces included.

**LINING:**  
breathable micro-perforated 3D fabric.

**REMOVABLE INSOLE:**  
antistatic PU with ergonomic thermoforming.

**ANTI-PERFORATION INSOLE:**  
zero-perforation ultralight textile fiber (PS).

**TOE CAP:**  
non magnetic fiberglass,  
insulating, resistant to 200J.

**ANTI-SLIP ANTI-STATIC SOLE:**  
PU dual density with absorption  
of energy on the heel + LG.

**SIZES:**  
35-48 (UK 2½-13).

## DETROIT **ESD** S1PS SR FO LG

**07538..NRGS**



**UPPER:**  
perforated suede and microfiber reinforcements.  
Additional 2nd color laces included.

**LINING:**  
breathable micro-perforated 3D fabric.

**REMOVABLE INSOLE:**  
antistatic PU with ergonomic thermoforming.

**ANTI-PERFORATION INSOLE:**  
zero-perforation ultralight textile fiber (PS).

**TOE CAP:**  
non magnetic fiberglass,  
insulating, resistant to 200J.

**ANTI-SLIP ANTI-STATIC SOLE:**  
PU dual density with absorption  
of energy on the heel + LG.

**SIZES:**  
35-48 (UK 2½-13).



# LINE

## INDY S3S NUBUCK

**SAFETY FOOTWEAR MADE OF SOFT TUMBLED NUBUCK, "FLEXGRIP+" BI-DENSITY PU SOLE WITH SPECIAL HEEL DESIGN COMPLIANT TO THE REQUIREMENTS FOR LADDER GRIP (LG). ELEGANT, SOFT AND RESISTANT, PERFECT IN ANY CONDITION.**



- 01** Laminar profile to increase grip for SR test.
- 02** Profiles engraved for a better grip on stairs (LG - heelheight > 10 mm).
- 03** Laminar profiles for greater slipping resistance.

**"FLEXGRIP+" BI-DENSITY PU SOLE WITH SPECIAL HEEL COMPLIANT WITH THE REQUIREMENTS FOR LADDER GRIP (LG).**



EN ISO 20345:2022

- PS** Perforation resistance (min.1100 N & each single value >950 N) non-metal insert: d=3.0mm Conical Nail.
- SR** Slip resistance - on ceramic tile floor with glycerine.
- LG** Ladder grip.

P. 100

**CONOR ESD S3S SR FO LG**

**07543..GSGF**



**UPPER:**  
water repellent nubuck and microfiber reinforcements.  
Additional 2nd color laces included.

**LINING:**  
breathable micro-perforated 3D fabric.

**REMOVABLE INSOLE:**  
antistatic PU with ergonomic thermoforming.

**ANTI-PERFORATION INSOLE:**  
zero-perforation ultralight textile fiber (PS).

**TOE CAP:**  
non magnetic fiberglass,  
insulating, resistant to 200J.

**ANTI-SLIP ANTI-STATIC SOLE:**  
PU dual density with absorption  
of energy on the heel + LG.

**SIZES:**  
35-48 (UK 2½-13).

**JURI ESD S3S SR FO LG**

**07544..GSGF**



**UPPER:**  
water repellent nubuck and microfiber reinforcements.  
Specific eyelet for quick release.  
Additional 2nd color laces included.

**LINING:**  
breathable micro-perforated 3D fabric.

**REMOVABLE INSOLE:**  
antistatic PU with ergonomic thermoforming.

**ANTI-PERFORATION INSOLE:**  
zero-perforation ultralight textile fiber (PS).

**TOE CAP:**  
non magnetic fiberglass,  
insulating, resistant to 200J.

**ANTI-SLIP ANTI-STATIC SOLE:**  
PU dual density with absorption  
of energy on the heel + LG.

**SIZES:**  
35-48 (UK 2½-13).

**GREGOR ESD S3S SR FO LG**

**07543..NRNR**



**NEW**



**UPPER:**  
water repellent nubuck and microfiber reinforcements.  
Additional 2nd color laces included.

**LINING:**  
breathable micro-perforated 3D fabric.

**REMOVABLE INSOLE:**  
antistatic PU with ergonomic thermoforming.

**ANTI-PERFORATION INSOLE:**  
zero-perforation ultralight textile fiber (PS).

**TOE CAP:**  
non magnetic fiberglass,  
insulating, resistant to 200J.

**ANTI-SLIP ANTI-STATIC SOLE:**  
PU dual density with absorption  
of energy on the heel + LG.

**SIZES:**  
35-48 (UK 2½-13).

**OSCAR ESD S3S SR FO LG**

**07544..NRNR**



**NEW**



**UPPER:**  
water repellent nubuck and microfiber reinforcements.  
Additional 2nd color laces included.

**LINING:**  
breathable micro-perforated 3D fabric.

**REMOVABLE INSOLE:**  
antistatic PU with ergonomic thermoforming.

**ANTI-PERFORATION INSOLE:**  
zero-perforation ultralight textile fiber (PS).

**TOE CAP:**  
non magnetic fiberglass,  
insulating, resistant to 200J.

**ANTI-SLIP ANTI-STATIC SOLE:**  
PU dual density with absorption  
of energy on the heel + LG.

**SIZES:**  
35-48 (UK 2½-13).



# LINE INDY S3S

**SAFETY FOOTWEAR, MADE OF FINE WATER REPELLENT SUEDE LEATHER OR NUBUCK, "FLEXGRIP+" BI-DENSITY PU SOLE WITH SPECIAL HEEL DESIGN COMPLIANT TO THE REQUIREMENTS FOR LADDER GRIP (LG). LIGHTWEIGHT AND SUITABLE FOR ANY USE.**



- 01** Laminar profile to increase grip for SR test.
- 02** Profiles engraved for a better grip on stairs (LG - heelheight > 10 mm).
- 03** Laminar profiles for greater slipping resistance.

**"FLEXGRIP+" BI-DENSITY PU SOLE WITH SPECIAL HEEL COMPLIANT WITH THE REQUIREMENTS FOR LADDER GRIP (LG).**



**EN ISO 20345:2022**

**DGUV 112-191 COMPLIANT**  
(Optional and interchangeable orthopaedic insoles BY SECOSOL®).

- PS** Perforation resistance (min.1100 N & each single value >950 N) non-metal insert: d=3.0mm Conical Nail.
- SR** Slip resistance - on ceramic tile floor with glycerine.
- LG** Ladder grip.

**P. 100**

## SANREMO **ESD** S3S SR FO LG

**07537MR..BMRS**



**UPPER:**  
water repellent suede and microfiber reinforcements.  
Additional 2nd color laces included.

**LINING:**  
breathable micro-perforated 3D fabric.

**REMOVABLE INSOLE:**  
antistatic PU with ergonomic thermoforming.

**ANTI-PERFORATION INSOLE:**  
zero-perforation ultralight textile fiber (PS).

**TOE CAP:**  
non magnetic fiberglass, insulating, resistant to 200J.

**ANTI-SLIP ANTI-STATIC SOLE:**  
PU dual density with absorption of energy on the heel + LG.

**SIZES:**  
35-48 (UK 2½-13).

## DANICA **ESD** S3S SR FO LG

**07537..GRFU**



**UPPER:**  
water repellent suede and microfiber reinforcements.  
Additional 2nd color laces included.

**LINING:**  
breathable micro-perforated 3D fabric.

**REMOVABLE INSOLE:**  
antistatic PU with ergonomic thermoforming.

**ANTI-PERFORATION INSOLE:**  
zero-perforation ultralight textile fiber (PS).

**TOE CAP:**  
non magnetic fiberglass, insulating, resistant to 200J.

**ANTI-SLIP ANTI-STATIC SOLE:**  
PU dual density with absorption of energy on the heel + LG.

**SIZES:**  
35-48 (UK 2½-13).

## BALTIMORA **ESD** S3S SR FO LG

**07537..BMGF**



**UPPER:**  
water repellent suede and microfiber reinforcements.  
Additional 2nd color laces included.

**LINING:**  
breathable micro-perforated 3D fabric.

**REMOVABLE INSOLE:**  
antistatic PU with ergonomic thermoforming.

**ANTI-PERFORATION INSOLE:**  
zero-perforation ultralight textile fiber (PS).

**TOE CAP:**  
non magnetic fiberglass, insulating, resistant to 200J.

**ANTI-SLIP ANTI-STATIC SOLE:**  
PU dual density with absorption of energy on the heel + LG.

**SIZES:**  
35-48 (UK 2½-13).

## RICHMOND **ESD** S3S SR FO LG

**07541..BMGF**



**UPPER:**  
water repellent nubuck and microfiber reinforcements.  
Specific eyelet for quick release.  
Additional 2nd color laces included.

**LINING:**  
breathable micro-perforated 3D fabric.

**REMOVABLE INSOLE:**  
antistatic PU with ergonomic thermoforming.

**ANTI-PERFORATION INSOLE:**  
zero-perforation ultralight textile fiber (PS).

**TOE CAP:**  
non magnetic fiberglass, insulating, resistant to 200J.

**ANTI-SLIP ANTI-STATIC SOLE:**  
PU dual density with absorption of energy on the heel + LG.

**SIZES:**  
35-48 (UK 2½-13).





LINE  
INDY-e S3S

SAFETY FOOTWEAR MADE OF SPECIAL REGENERATED ANTI-ABRASION MATERIAL SPARCO® FULL EFFICIENCY. HF REINFORCEMENT ON THE TOE, “FLEXGRIP+” BI-DENSITY PU SOLE WITH SPECIAL HEEL COMPLIANT WITH THE REQUIREMENTS FOR LADDER GRIP (LG). LIGHTWEIGHT, ENVIRONMENTALLY FRIENDLY AND RESISTANT FOR ANY WORK ENVIRONMENTS.



- 01 Laminar profile to increase grip for SR test.
- 02 Profiles engraved for a better grip on stairs (LG – heelheight > 10 mm).
- 03 Laminar profiles for greater slipping resistance.

“FLEXGRIP+” BI-DENSITY PU SOLE WITH SPECIAL HEEL COMPLIANT WITH THE REQUIREMENTS FOR LADDER GRIP (LG).



CE EN ISO 20345:2022

- PS Perforation resistance (min.1100 N & each single value >950 N) non-metal insert: d=3.0mm Conical Nail.
- SR Slip resistance - on ceramic tile floor with glycerine.
- LG Ladder grip.

P. 100



Its attention to detail, care devoted to the choice of sustainable materials and its construction of models totally styled, designed and validated in Italy has allowed SPARCO to develop the FULL EFFICIENCY project, whose basic principles are:

- VIRTUOUS CIRCULAR PRODUCTION CYCLE
- CORPORATE SOCIAL RESPONSABILITY
- ZERO WASTE TARGET
- FULLY OWNED TECHNOLOGY



FORESTER ESD S3S SR FO LG

07540..NRVF



- UPPER:** special regenerated anti-abrasion material Sparco® FULL EFFICIENCY with HF reinforcement on the toe. Additional 2nd color laces included.
- LINING:** breathable micro-perforated 3D fabric.
- REMOVABLE INSOLE:** antistatic PU with ergonomic thermoforming.
- ANTI-PERFORATION INSOLE:** zero-perforation ultralight textile fiber (PS).
- TOE CAP:** non magnetic fiberglass, insulating, resistant to 200J.
- ANTI-SLIP ANTI-STATIC SOLE:** PU dual density with absorption of energy on the heel + LG.
- SIZES:** 35-48 (UK 2½-13).

RANGER ESD S3S SR FO LG

07542..NRVF



- UPPER:** special regenerated anti-abrasion material Sparco® FULL EFFICIENCY with HF reinforcement on the toe. Specific eyelet for quick release. Additional 2nd color laces included.
- LINING:** breathable micro-perforated 3D fabric.
- REMOVABLE INSOLE:** antistatic PU with ergonomic thermoforming.
- ANTI-PERFORATION INSOLE:** zero-perforation ultralight textile fiber (PS).
- TOE CAP:** non magnetic fiberglass, insulating, resistant to 200J.
- ANTI-SLIP ANTI-STATIC SOLE:** PU dual density with absorption of energy on the heel + LG.
- SIZES:** 35-48 (UK 2½-13).



# LINE PRACTICE

**RUNNING-STYLE SAFETY FOOTWEAR MADE OF BREATHABLE MICRO-PERFORATED 3D FABRIC AND SCRATCH-RESISTANT MICROFIBRE. LIGHT AND BREATHABLE, PERFECT FOR INDOOR USE OR HOT WEATHER.**



- 01** Laminar profiles to increase grip.
- 02** Profiles engraved for a better grip on the stairs.
- 03** Laminar profiles for greater slipping resistance.

**ULTRA-FLEXIBLE SINGLE-DENSITY PU THAT INCREASES COMFORT AND REDUCES STRESS TO THE LOWER LIMBS AND THE SPINE.**



- PL** Puncture resistance (min.1100 N) non-metal insert: tapered nail d=4,5 mm.
- SR** Slip resistance - on ceramic tile floor with glycerine.

P. 100

CE EN ISO 20345:2022



KEKE **ESD** S1PL SR FO

07517..NRVF



- UPPER:** breathable micro-perforated fabric and scratch-resistant microfibre with high abrasion resistance.
- LINING:** breathable micro-perforated 3D fabric.
- REMOVABLE INSOLE:** antistatic PU with ergonomic thermoforming.
- ANTI-PERFORATION INSOLE:** zero-perforation textile fibre (PL).
- TOE CAP:** non magnetic fiberglass, insulating, resistant to 200J.
- ANTI-SLIP ANTI-STATIC SOLE:** single-density PU with energy absorption on the heel.
- SIZES:** 36-48 (UK 3½-13).

NIGEL **ESD** S1PL SR FO

07517..NRNR



- UPPER:** breathable micro-perforated fabric and scratch-resistant microfibre with high abrasion resistance.
- LINING:** breathable micro-perforated 3D fabric.
- REMOVABLE INSOLE:** antistatic PU with ergonomic thermoforming.
- ANTI-PERFORATION INSOLE:** zero-perforation textile fibre (PL).
- TOE CAP:** non magnetic fiberglass, insulating, resistant to 200J.
- ANTI-SLIP ANTI-STATIC SOLE:** single-density PU with energy absorption on the heel.
- SIZES:** 36-48 (UK 3½-13).



NELSON **ESD** S1PL SR FO

07517..NRAZ



**UPPER:**  
breathable micro-perforated fabric and scratch-resistant microfibre with high abrasion resistance.

**LINING:**  
breathable micro-perforated 3D fabric.

**REMOVABLE INSOLE:**  
antistatic PU with ergonomic thermoforming.

**ANTI-PERFORATION INSOLE:**  
zero-perforation textile fibre (PL).

**TOE CAP:**  
non magnetic fiberglass, insulating, resistant to 200J.

**ANTI-SLIP ANTI-STATIC SOLE:**  
single-density PU with energy absorption on the heel.

**SIZES:**  
36-48 (UK 3½-13).

JOS **ESD** S1PL SR FO

07517..NRGF



**UPPER:**  
breathable micro-perforated fabric and scratch-resistant microfibre with high abrasion resistance.

**LINING:**  
breathable micro-perforated 3D fabric.

**REMOVABLE INSOLE:**  
antistatic PU with ergonomic thermoforming.

**ANTI-PERFORATION INSOLE:**  
zero-perforation textile fibre (PL).

**TOE CAP:**  
non magnetic fiberglass, insulating, resistant to 200J.

**ANTI-SLIP ANTI-STATIC SOLE:**  
single-density PU with energy absorption on the heel.

**SIZES:**  
36-48 (UK 3½-13).

JODY **ESD** S1PL SR FO

07517..NRFU



**UPPER:**  
breathable micro-perforated fabric and scratch-resistant microfibre with high abrasion resistance.

**LINING:**  
breathable micro-perforated 3D fabric.

**REMOVABLE INSOLE:**  
antistatic PU with ergonomic thermoforming.

**ANTI-PERFORATION INSOLE:**  
zero-perforation textile fibre (PL).

**TOE CAP:**  
non magnetic fiberglass, insulating, resistant to 200J.

**ANTI-SLIP ANTI-STATIC SOLE:**  
single-density PU with energy absorption on the heel.

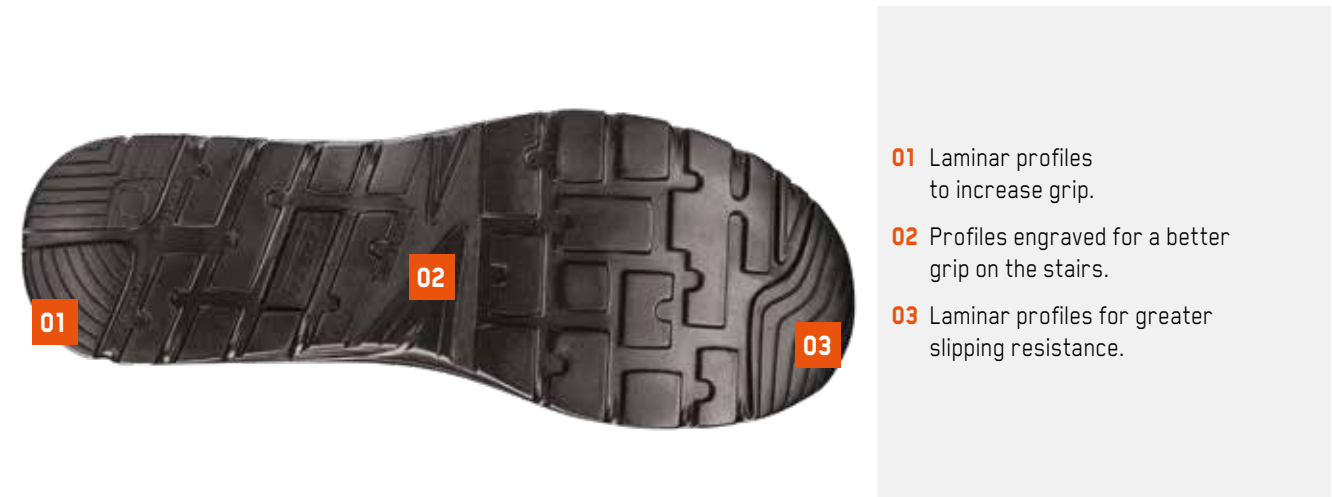
**SIZES:**  
36-43 (UK 3½-9).





# LINE NITRO

**RUNNING-STYLE SAFETY FOOTWEAR**  
MADE OF WATER-REPELLENT MICROFIBRE AND SUEDE,  
IDEAL FOR BOTH INDOOR AND OUTDOOR USE.



**ULTRA-FLEXIBLE SINGLE-DENSITY PU THAT INCREASES COMFORT AND REDUCES STRESS TO THE LOWER LIMBS AND THE SPINE.**



CE EN ISO 20345:2022

- PL** Perforation resistance (min.1100 N) non-metal insert: d=4.5mm Conical Nail.
- SR** Slip resistance - on ceramic tile floor with glycerine.

P. 100



# NITRO LINE

DIDIER **ESD** S3L SR FO

07522..NRGR



- UPPER:** high-quality water-repellent microfibre.
- LINING:** breathable micro-perforated 3D fabric.
- REMOVABLE INSOLE:** antistatic in PU with ergonomic thermoforming.
- ANTI-PERFORATION INSOLE:** zero-perforation textile fibre (PL).
- TOE CAP:** non magnetic fibreglass, insulating, resistant to 200J.
- ANTI-SLIP ANTI-STATIC SOLE:** single-density PU with energy absorption on the heel.
- SIZES:** 36-48 (UK 3½-13).

MARCUS **ESD** S3L SR FO

07522..RSNR



- UPPER:** high-quality water-repellent microfibre and suede.
- LINING:** breathable micro-perforated 3D fabric.
- REMOVABLE INSOLE:** antistatic in PU with ergonomic thermoforming.
- ANTI-PERFORATION INSOLE:** zero-perforation textile fibre (PL).
- TOE CAP:** non magnetic fibreglass, insulating, resistant to 200J.
- ANTI-SLIP ANTI-STATIC SOLE:** single-density PU with energy absorption on the heel.
- SIZES:** 36-48 (UK 3½-13).

PETTER **ESD** S3L SR FO

07522..NRAZ



- UPPER:** high-quality water-repellent microfibre.
- LINING:** breathable micro-perforated 3D fabric.
- REMOVABLE INSOLE:** antistatic in PU with ergonomic thermoforming.
- ANTI-PERFORATION INSOLE:** zero-perforation textile fibre (PL).
- TOE CAP:** non magnetic fibreglass, insulating, resistant to 200J.
- ANTI-SLIP ANTI-STATIC SOLE:** single-density PU with energy absorption on the heel.
- SIZES:** 36-48 (UK 3½-13).



# LINE NITRO

**RUNNING-STYLE SAFETY FOOTWEAR**  
MADE OF WATER-REPELLENT SMOOTH LEATHER  
PERFECT FOR BOTH INDOOR AND OUTDOOR USE.



- 01 Laminar profiles to increase grip.
- 02 Profiles engraved for a better grip on the stairs.
- 03 Laminar profiles for greater slipping resistance.

**ULTRA-FLEXIBLE SINGLE-DENSITY PU THAT INCREASES COMFORT AND REDUCES STRESS TO THE LOWER LIMBS AND THE SPINE.**



CE EN ISO 20345:2022

- PL Perforation resistance (min.1100 N) non-metal insert: d=4.5mm Conical Nail.
- SR Slip resistance - on ceramic tile floor with glycerine.

P. 100



HANNU **ESD** S3L SR FO

07522..BIBI



- UPPER:** high-quality water-repellent smooth leather.
- LINING:** breathable micro-perforated 3D fabric.
- REMOVABLE INSOLE:** antistatic in PU with ergonomic thermoforming.
- ANTI-PERFORATION INSOLE:** zero-perforation textile fibre (PL).
- TOE CAP:** non magnetic fibreglass, insulating, resistant to 200J.
- ANTI-SLIP ANTI-STATIC SOLE:** single-density PU with energy absorption on the heel.
- SIZES:** 36-48 (UK 3½-13).

MIKKO **ESD** S3L SR FO

07522..NRNR



- UPPER:** high-quality water-repellent smooth leather.
- LINING:** breathable micro-perforated 3D fabric.
- REMOVABLE INSOLE:** antistatic in PU with ergonomic thermoforming.
- ANTI-PERFORATION INSOLE:** zero-perforation textile fibre (PL).
- TOE CAP:** non magnetic fibreglass, insulating, resistant to 200J.
- ANTI-SLIP ANTI-STATIC SOLE:** single-density PU with energy absorption on the heel.
- SIZES:** 36-48 (UK 3½-13).





# LINE ALLROAD

**SAFETY FOOTWEAR MADE OF WATER-REPELLENT FINE NUBUCK, SUEDE LEATHER OR MICROFIBRE WITH NYLON COLLAR. PHYLON MIDSOLE WITH CROSSGRIP HRO RUBBER TREAD. LIGHT, PRECIOUS AND DURABLE, THEY ARE SUITABLE FOR BOTH OUTDOOR AND INDOOR USE.**



**ULTRALIGHT SOLE WITH PHYLON\* MIDSOLE AND CROSSGRIP RUBBER TREAD. IT FEATURES AN IDEAL SCULPTURE FOR MAXIMUM GRIP AND STABILISATION ON GRAVELLY, MUDDY AND SNOW-COVERED SURFACES. LIGHT AND COMFORTABLE, IT ABSORBS VIBRATIONS AND PREVENTS DAMAGE TO THE LOWER LIMBS AND THE SPINE.**



CE EN ISO 20345:2022

- 01** Laminar engraving for maximum grip.
- 02** Anti-fatigue lug to increase energy absorption.
- 03** Large side drains for water, mud and debris.
- 04** Laminar engraving for greater slipping resistance.

- PS** Puncture resistance (min. 1100 N & any single value >950 N) Non-metallic insert: tapered nail d=3,0 mm.
- SR** Slip resistance - on ceramic tile floor with glycerine.
- HRO** Contact Heat Resistance (300 °C. for 60").

P. 100

**DGUV 112-191 COMPLIANT**  
(Optional and interchangeable orthopaedic insoles BY SECOSOL®)

\* Phylon is a light and resistant plastic made with EVA foam obtained by injection of compressed air.



SOCHI **ESD** S3S SR FO HRO

07528..BMGF



- UPPER:** nylon and water-repellent microfibre.
- LINING:** breathable micro-perforated 3D fabric.
- REMOVABLE INSOLE:** antistatic PU with ergonomic thermoforming.
- ANTI-PERFORATION INSOLE:** zero-perforation textile fibre (PS).
- TOE CAP:** non magnetic fibreglass, insulating, resistant to 200J.
- ANTI-SLIP ANTI-STATIC SOLE:** phylon midsole and FO+HRO nitrile rubber tread with energy absorption on the heel.
- SIZES:** 38-48 (UK 5-13).

MOTEGI **ESD** S3S SR FO HRO

07529..NRGF



- UPPER:** nylon and water-repellent microfibre.
- LINING:** breathable micro-perforated 3D fabric.
- REMOVABLE INSOLE:** antistatic PU with ergonomic thermoforming.
- ANTI-PERFORATION INSOLE:** zero-perforation textile fibre (PS).
- TOE CAP:** non magnetic fibreglass, insulating, resistant to 200J.
- ANTI-SLIP ANTI-STATIC SOLE:** phylon midsole and FO+HRO nitrile rubber tread with energy absorption on the heel.
- SIZES:** 38-48 (UK 5-13).



STIRIA **ESD** S3S SR FO HRO

07528..NRNR



**UPPER:**  
nylon and water-repellent microfibre.

**LINING:**  
breathable micro-perforated 3D fabric.

**REMOVABLE INSOLE:**  
antistatic PU with ergonomic thermoforming.

**ANTI-PERFORATION INSOLE:**  
zero-perforation textile fibre (PS).

**TOE CAP:**  
non magnetic fibreglass, insulating, resistant to 200J.

**ANTI-SLIP ANTI-STATIC SOLE:**  
phylon midsole and FO+HRO nitrile rubber tread with energy absorption on the heel.

**SIZES:**  
38-48 (UK 5-13).

OKAYAMA **ESD** S3S SR FO HRO

07529..NRNR



**UPPER:**  
nylon and water-repellent microfibre.

**LINING:**  
breathable micro-perforated 3D fabric.

**REMOVABLE INSOLE:**  
antistatic PU with ergonomic thermoforming.

**ANTI-PERFORATION INSOLE:**  
zero-perforation textile fibre (PS).

**TOE CAP:**  
non magnetic fibreglass, insulating, resistant to 200J.

**ANTI-SLIP ANTI-STATIC SOLE:**  
phylon midsole and FO+HRO nitrile rubber tread with energy absorption on the heel.

**SIZES:**  
38-48 (UK 5-13).

BAKU **ESD** S3S SR FO HRO

07528..NRVF



**UPPER:**  
nylon and water-repellent microfibre.

**LINING:**  
breathable micro-perforated 3D fabric.

**REMOVABLE INSOLE:**  
antistatic PU with ergonomic thermoforming.

**ANTI-PERFORATION INSOLE:**  
zero-perforation textile fibre (PS).

**TOE CAP:**  
non magnetic fibreglass, insulating, resistant to 200J.

**ANTI-SLIP ANTI-STATIC SOLE:**  
phylon midsole and FO+HRO nitrile rubber tread with energy absorption on the heel.

**SIZES:**  
38-48 (UK 5-13).

LEAP **ESD** S3S SR FO HRO

07529..GSVF



**UPPER:**  
nubuck and water-repellent suede, nylon collar.

**LINING:**  
breathable micro-perforated 3D fabric.

**REMOVABLE INSOLE:**  
antistatic PU with ergonomic thermoforming.

**ANTI-PERFORATION INSOLE:**  
zero-perforation textile fibre (PS).

**TOE CAP:**  
non magnetic fibreglass, insulating, resistant to 200J.

**ANTI-SLIP ANTI-STATIC SOLE:**  
phylon midsole and FO+HRO nitrile rubber tread with energy absorption on the heel.

**SIZES:**  
38-48 (UK 5-13).

ROC **ESD** S3S SR FO HRO

07528..TAGI



**UPPER:**  
nubuck and water-repellent suede, nylon collar.

**LINING:**  
breathable micro-perforated 3D fabric.

**REMOVABLE INSOLE:**  
antistatic PU with ergonomic thermoforming.

**ANTI-PERFORATION INSOLE:**  
zero-perforation textile fibre (PS).

**TOE CAP:**  
non magnetic fibreglass, insulating, resistant to 200J.

**ANTI-SLIP ANTI-STATIC SOLE:**  
phylon midsole and FO+HRO nitrile rubber tread with energy absorption on the heel.

**SIZES:**  
38-48 (UK 5-13).

STONE **ESD** S3S SR FO HRO

07529..TAGI



**UPPER:**  
nubuck and water-repellent suede, nylon collar.

**LINING:**  
breathable micro-perforated 3D fabric.

**REMOVABLE INSOLE:**  
antistatic PU with ergonomic thermoforming.

**ANTI-PERFORATION INSOLE:**  
zero-perforation textile fibre (PS).

**TOE CAP:**  
non magnetic fibreglass, insulating, resistant to 200J.

**ANTI-SLIP ANTI-STATIC SOLE:**  
phylon midsole and FO+HRO nitrile rubber tread with energy absorption on the heel.

**SIZES:**  
38-48 (UK 5-13).





# LINE GYMKHANA

**SNEAKER-STYLE SAFETY  
FOOTWEAR, MADE OF EVA MIDSOLE  
AND MULTIGRIP RUBBER TREAD,  
VELOUR MICROFIBRE UPPER AND  
BREATHABLE MICRO-PERFORATED  
FABRIC. SUITABLE FOR ANY USE.**



*THE SPECIFIC DESIGN OF THE MULTIGRIP SOLE MAKES IT PARTICULARLY SUITABLE FOR USE  
ON FLAT, INCLINED AND SLIPPERY SURFACES SUCH AS ROOFS (EX STANDARD UNI 11583:2015)*



**SUPERLIGHT EVA MIDSOLE  
AND MULTIGRIP FO+HRO RUBBER TREAD.**



CE EN ISO 20345:2022

- 01 Self-cleaning profiles for the outflow of liquids.
- 02 Sculpted lugs for greater slip resistance.
- 03 Self-cleaning profiles for the drainage of liquids.

- PS Puncture resistance (min. 1100 N & any single value >950 N) Non-metallic insert: tapered nail d=3,0 mm.
- SR Slip resistance - on ceramic tile floor with glycerine.
- HRO Contact Heat Resistance (300 °C. for 60").

P. 100

DANI **ESD** S1PS SR FO HRO

07527..BMGF



**UPPER:**  
velour microfibre and breathable micro-perforated fabric.  
Additional 2nd color laces included.

**LINING:**  
breathable micro-perforated 3D fabric.

**REMOVABLE INSOLE:**  
antistatic PU with ergonomic thermoforming.

**ANTI-PERFORATION INSOLE:**  
zero-perforation textile fibre (PS).

**TOE CAP:**  
non magnetic fibreglass, insulating, resistant to 200J.

**ANTI-SLIP ANTI-STATIC SOLE:**  
EVA midsole and FO+HRO nitrile rubber tread with energy absorption on heel.

**SIZES:**  
36-48 (UK 3½-13).

OLYMPUS **ESD** S3S SR FO HRO

07536..BMRS



**UPPER:**  
fine water-repellent nubuck and suede.  
Additional 2nd color laces included.

**LINING:**  
breathable micro-perforated 3D fabric.

**REMOVABLE INSOLE:**  
antistatic PU with ergonomic thermoforming.

**ANTI-PERFORATION INSOLE:**  
zero-perforation textile fibre (PS).

**TOE CAP:**  
non magnetic fibreglass, insulating, resistant to 200J.

**ANTI-SLIP ANTI-STATIC SOLE:**  
EVA midsole and FO+HRO nitrile rubber tread with energy absorption on heel.

**SIZES:**  
36-48 (UK 3½-13).

SEB **ESD** S1PS SR FO HRO

07527..VSLI



**UPPER:**  
velour microfibre and breathable micro-perforated fabric.  
Additional 2nd color laces included.

**LINING:**  
breathable micro-perforated 3D fabric.

**REMOVABLE INSOLE:**  
antistatic PU with ergonomic thermoforming.

**ANTI-PERFORATION INSOLE:**  
zero-perforation textile fibre (PS).

**TOE CAP:**  
non magnetic fibreglass, insulating, resistant to 200J.

**ANTI-SLIP ANTI-STATIC SOLE:**  
EVA midsole and FO+HRO nitrile rubber tread with energy absorption on heel.

**SIZES:**  
36-48 (UK 3½-13).

ACROPOLIS **ESD** S3S SR FO HRO

07536..GSAF



**UPPER:**  
fine water-repellent nubuck and suede.  
Additional 2nd color laces included.

**LINING:**  
breathable micro-perforated 3D fabric.

**REMOVABLE INSOLE:**  
antistatic PU with ergonomic thermoforming.

**ANTI-PERFORATION INSOLE:**  
zero-perforation textile fibre (PS).

**TOE CAP:**  
non magnetic fibreglass, insulating, resistant to 200J.

**ANTI-SLIP ANTI-STATIC SOLE:**  
EVA midsole and FO+HRO nitrile rubber tread with energy absorption on heel.

**SIZES:**  
36-48 (UK 3½-13).



# CAPSULE COLLECTIONS

## GYMKHANA

SPECIAL LINE OF SAFETY FOOTWEAR IN MARTINI RACING LIVERY. FLEXIBLE, LIGHTWEIGHT SOLES AND PREMIUM MATERIALS SUCH AS **NUBUCK, SUEDE OR VELOUR MICROFIBER**. COMFORTABLE AND WITH A UNIQUE STYLE.

**THE SPECIFIC DESIGN OF THE MULTIGRIP SOLE** MAKES IT PARTICULARLY SUITABLE FOR USE ON FLAT, INCLINED AND SLIPPERY SURFACES SUCH AS ROOFS (EX STANDARD UNI 11583:2015)



**SUPERLIGHT EVA MIDSOLE AND MULTIGRIP FO+HRO RUBBER TREAD.**



**CE EN ISO 20345:2022**

- 01** Self-cleaning profiles for the drainage of liquids.
- 02** Sculpted lugs for greater slip resistance.
- 03** Self-cleaning profiles for the outflow of liquids.

- PS** Puncture resistance (min. 1100 N & any single value >950 N) Non-metallic insert: tapered nail d=3,0 mm.
- SR** Slip resistance - on ceramic tile floor with glycerine.
- HRO** Contact Heat Resistance (300 °C. for 60").

P. 100



# GYMKHANA CAPSULE COLLECTIONS

MARTINI **ESD** S1PS SR FO HRO

**07527MR..BM**



- UPPER:** velour microfibre and breathable micro-perforated fabric. Additional 2nd color laces included.
- LINING:** breathable micro-perforated 3D fabric.
- REMOVABLE INSOLE:** antistatic PU with ergonomic thermoforming.
- ANTI-PERFORATION INSOLE:** zero-perforation textile fibre (PS).
- TOE CAP:** non magnetic fibreglass, insulating, resistant to 200J.
- ANTI-SLIP ANTI-STATIC SOLE:** EVA midsole and FO+HRO nitrile rubber tread with energy absorption on heel.
- SIZES:** 36-48 (UK 3½-13).

MONTECARLO **ESD** S3S SR FO HRO

**07535MR..BM**



- UPPER:** fine water-repellent nubuck and suede. Additional 2nd color laces included.
- LINING:** breathable micro-perforated 3D fabric.
- REMOVABLE INSOLE:** antistatic PU with ergonomic thermoforming.
- ANTI-PERFORATION INSOLE:** zero-perforation textile fibre (PS).
- TOE CAP:** non magnetic fibreglass, insulating, resistant to 200J.
- ANTI-SLIP ANTI-STATIC SOLE:** EVA midsole and FO+HRO nitrile rubber tread with energy absorption on heel.
- SIZES:** 36-48 (UK 3½-13).

RED BULL **ESD** S3S SR FO HRO

**07535RB..BMRS**



- UPPER:** fine water-repellent nubuck and suede. Additional 2nd color laces included.
- LINING:** breathable micro-perforated 3D fabric.
- REMOVABLE INSOLE:** antistatic PU with ergonomic thermoforming.
- ANTI-PERFORATION INSOLE:** zero-perforation textile fibre (PS).
- TOE CAP:** non magnetic fibreglass, insulating, resistant to 200J.
- ANTI-SLIP ANTI-STATIC SOLE:** EVA midsole and FO+HRO nitrile rubber tread with energy absorption on heel.
- SIZES:** 36-48 (UK 3½-13).



# NEW LINE HORIZON

**SAFETY FOOTWEAR MADE OF SUEDE AND NYLON UPPER.**  
**ULTRALIGHT TEXTILE FIBER ANTI-PERFORATION INSOLE.**  
 LIGHT AND DURABLE, THEY ARE SUITABLE FOR ANY WORKING CONDITIONS.



- 01** Anti-fatigue cell to increase SR energy absorption.
- 02** Profiles engraved for a better grip on stairs.
- 03** Self-cleaning lugs.

**ULTRALIGHT DUAL-DENSITY POLYURETHANE SOLE DESIGNED TO FACILITATE DYNAMIC USE AND MOVE SAFELY IN ANY SITUATION.**



CE EN ISO 20345:2022

- PS** Puncture resistance (min. 1100 N & any single value >950 N) Non-metallic insert: tapered nail d=3,0 mm.
- SR** Slip resistance - on ceramic tile floor with glycerine.

P. 100



**MORENO ESD S1PS SR FO**

**07546..NRCE**



**NEW**



- UPPER:** abrasion resistant fine suede.
- LINING:** breathable micro-perforated 3D fabric.
- REMOVABLE INSOLE:** antistatic PU with ergonomic thermoforming.
- ANTI-PERFORATION INSOLE:** zero-perforation textile fibre (PS).
- TOE CAP:** non magnetic fibreglass, insulating, resistant to 200J.
- ANTI-SLIP ANTI-STATIC SOLE:** dual-density polyurethane with energy absorption on the heel.
- SIZES:** 35-49 (UK 2½-14).

**FARGO ESD S3S SR FO**

**07547..NRCE**



**NEW**



- UPPER:** water penetration-resistant nylon and suede.
- LINING:** breathable micro-perforated 3D fabric.
- REMOVABLE INSOLE:** antistatic PU with ergonomic thermoforming.
- ANTI-PERFORATION INSOLE:** zero-perforation textile fibre (PS).
- TOE CAP:** non magnetic fibreglass, insulating, resistant to 200J.
- ANTI-SLIP ANTI-STATIC SOLE:** dual-density polyurethane with energy absorption on the heel.
- SIZES:** 35-49 (UK 2½-14).



# NEW LINE TARGA

SAFETY FOOTWEAR MADE OF FINE SMOOTH LEATHER RESISTANT TO WATER PENETRATION. SOLE IN BI-DENSITY POLYURETHANE "STREET-TECH" COMPLIANT SR+FO. DURABLE AND RESISTANT, THEY ARE PERFECT IN ANY SITUATION.



ULTRALIGHT DUAL-DENSITY POLYURETHANE SOLE DESIGNED TO FACILITATE DYNAMIC USE AND MOVE SAFELY IN ANY SITUATION.



CE EN ISO 20345:2022+A1:2024

- 01** Anti-fatigue cell to increase SR energy absorption.
- 02** Profiles engraved for a better grip on stairs.
- 03** Self-cleaning lugs.

- PS** Puncture resistance (min. 1100 N & any single value >950 N) Non-metallic insert: tapered nail d=3,0 mm.
- SR** Slip resistance - on ceramic tile floor with glycerine.

P. 100

## ARTURO ESD S3S SR FO

BTB0011B0K15..



NEW



**UPPER:**  
high quality water repellent smooth leather.  
Additional 2nd color laces included.

**LINING:**  
breathable micro-perforated 3D fabric.

**REMOVABLE INSOLE:**  
antistatic in PU with ergonomic thermoforming.

**ANTI-PERFORATION INSOLE:**  
zero-perforation ultralight textile fiber (PS).

**TOE CAP:**  
non magnetic fibreglass, insulating, resistant to 200J.

**ANTI-SLIP ANTI-STATIC SOLE:**  
PU dual density with absorption of energy on the heel.

**SIZES:**  
36-48 (UK 3½-13).

## WILLY ESD S3S SR FO

BTB0012B0K15..



NEW



**UPPER:**  
high quality water repellent smooth leather.  
Additional 2nd color laces included.

**LINING:**  
breathable micro-perforated 3D fabric.

**REMOVABLE INSOLE:**  
antistatic in PU with ergonomic thermoforming.

**ANTI-PERFORATION INSOLE:**  
zero-perforation ultralight textile fiber (PS).

**TOE CAP:**  
non magnetic fibreglass, insulating, resistant to 200J.

**ANTI-SLIP ANTI-STATIC SOLE:**  
PU dual density with absorption of energy on the heel.

**SIZES:**  
36-48 (UK 3½-13).

## SANDRO ESD S3S SR FO

BTB0011B0K11..



NEW



**UPPER:**  
high quality water repellent smooth leather.  
Additional 2nd color laces included.

**LINING:**  
breathable micro-perforated 3D fabric.

**REMOVABLE INSOLE:**  
antistatic in PU with ergonomic thermoforming.

**ANTI-PERFORATION INSOLE:**  
zero-perforation ultralight textile fiber (PS).

**TOE CAP:**  
non magnetic fibreglass, insulating, resistant to 200J.

**ANTI-SLIP ANTI-STATIC SOLE:**  
PU dual density with absorption of energy on the heel.

**SIZES:**  
36-48 (UK 3½-13).

## PAUL ESD S3S SR FO

BTB0012B0K11..



NEW



**UPPER:**  
high quality water repellent smooth leather.  
Additional 2nd color laces included.

**LINING:**  
breathable micro-perforated 3D fabric.

**REMOVABLE INSOLE:**  
antistatic in PU with ergonomic thermoforming.

**ANTI-PERFORATION INSOLE:**  
zero-perforation ultralight textile fiber (PS).

**TOE CAP:**  
non magnetic fibreglass, insulating, resistant to 200J.

**ANTI-SLIP ANTI-STATIC SOLE:**  
PU dual density with absorption of energy on the heel.

**SIZES:**  
36-48 (UK 3½-13).





NEW LINE  
TARGA

SAFETY FOOTWEAR MADE OF FINE PULL-UP LEATHER RESISTANT TO WATER PENETRATION. SOLE IN BI-DENSITY POLYURETHANE "STREET-TECH" COMPLIANT SR+FO. DURABLE AND RESISTANT THEY ARE PERFECT IN EVERY SITUATION.



- 01 Anti-fatigue cell to increase SR energy absorption.
- 02 Profiles engraved for a better grip on stairs.
- 03 Self-cleaning lugs.

ULTRALIGHT DUAL-DENSITY POLYURETHANE SOLE DESIGNED TO FACILITATE DYNAMIC USE AND MOVE SAFELY IN ANY SITUATION.



CE EN ISO 20345:2022+A1:2024

- PS Puncture resistance (min. 1100 N & any single value >950 N) Non-metallic insert: tapered nail d=3,0 mm.
- SR Slip resistance - on ceramic tile floor with glycerine.

P. 100



NINO ESD S3S SR FO

BTB0011B0D15..



NEW



- UPPER:** high quality water repellent pull-up leather. Additional 2nd color laces included.
- LINING:** breathable micro-perforated 3D fabric.
- REMOVABLE INSOLE:** antistatic in PU with ergonomic thermoforming.
- ANTI-PERFORATION INSOLE:** zero-perforation ultralight textile fiber (PS).
- TOE CAP:** non magnetic fibreglass, insulating, resistant to 200J.
- ANTI-SLIP ANTI-STATIC SOLE:** PU dual density with absorption of energy on the heel.
- SIZES:** 36-48 (UK 3½-13).

VIC ESD S3S SR FO

BTB0012B0D15..



NEW



- UPPER:** high quality water repellent pull-up leather. Additional 2nd color laces included.
- LINING:** breathable micro-perforated 3D fabric.
- REMOVABLE INSOLE:** antistatic in PU with ergonomic thermoforming.
- ANTI-PERFORATION INSOLE:** zero-perforation ultralight textile fiber (PS).
- TOE CAP:** non magnetic fibreglass, insulating, resistant to 200J.
- ANTI-SLIP ANTI-STATIC SOLE:** PU dual density with absorption of energy on the heel.
- SIZES:** 36-48 (UK 3½-13).



# NEW LINE GOODWOOD

NEW LINE OF ANKLE BOOTS WITH **SPECIAL WATER-RESISTANT MEMBRANE DRS (DRY RESPIRATION SYSTEM)**. FINE WATER REPELLENT NUBUCK UPPER WITH NYLON COLLAR. RESISTANT, DURABLE AND BREATHABLE, THEY DO NOT FEAR ANY WORK ENVIRONMENT.



- 01** Sharp-edged dowels for greater grip on oily surfaces.
- 02** Engraved crampons for greater grip on stairs.
- 03** Closely spaced tread blocks for maximum grip on oily surfaces.

**SOFT PU MIDSOLE AND FO+HRO NITRILE RUBBER TREAD WITH SPECIFIC PRISM-FLEX+ TEXTURE WHICH ALLOWS A HIGH GRIP IN ANY CONDITION.**

CE EN ISO 20345:2022+A1:2024

CE EN ISO 20347:2022+A1:2024



- PS** Puncture resistance (min. 1100 N & any single value >950 N) Non-metallic insert: tapered nail d=3,0 mm.
- SR** Slip resistance - on ceramic tile floor with glycerine.
- HRO** Contact Heat Resistance (300 °C. for 60").

P. 100



# GOODWOOD LINE

DELL **ESD** S7S SR FO HRO CI HI SC

BTB0014BOK01..



**NEW**



- UPPER:** soft nubuck resistant to water penetration, DRS membrane, nylon thermoformed collar.
- LINING:** 3D breathable micro-perforated fabric + DRS membrane.
- REMOVABLE INSOLE:** low density antistatic PU with ergonomic thermoforming.
- ANTI-PERFORATION INSOLE:** ultralight zero-perforation textile fiber (PS).
- TOE CAP:** non-magnetic fiberglass, insulating, resistant to 200J PU over-cap compliant to SC (scuff cap).
- ANTISTATIC ANTI-SLIP SOLE:** PU midsole with over-cap, FO+HRO nitrile rubber tread.
- SIZES:** 38-48 (UK 5-13).

RIVER **ESD** 06 SR FO HRO CI HI

BTB0015BOK01..



**NEW**



- UPPER:** soft nubuck resistant to water penetration, DRS membrane, nylon thermoformed collar.
- LINING:** 3D breathable micro-perforated fabric + DRS membrane.
- REMOVABLE INSOLE:** low density antistatic PU with ergonomic thermoforming.
- ANTISTATIC ANTI-SLIP SOLE:** PU midsole with over-cap, FO+HRO nitrile rubber tread.
- SIZES:** 38-48 (UK 5-13).

VALLEY **ESD** 06 SR FO HRO CI HI

BTB0015BOD15..



**NEW**



- UPPER:** soft nubuck resistant to water penetration, DRS membrane, nylon thermoformed collar.
- LINING:** 3D breathable micro-perforated fabric + DRS membrane.
- REMOVABLE INSOLE:** low density antistatic PU with ergonomic thermoforming.
- ANTISTATIC ANTI-SLIP SOLE:** PU midsole with over-cap, FO+HRO nitrile rubber tread.
- SIZES:** 38-48 (UK 5-13).





# LINE ARCTIC

**SAFETY ANKLE BOOTS** WITH SPECIAL WATER-RESISTANT MEMBRANE **DRS** (DRY RESPIRATION SYSTEM), MADE OF HIGH-QUALITY WATER-REPELLENT SUEDE AND MICRO-INJECTED INSERTS. HARD-WEARING AND BREATHABLE, THEY ARE SUITABLE FOR **PARTICULARLY DAMP OR WET ENVIRONMENTS**.



- 01 Anti-fatigue cell to increase energy absorption.
- 02 Profiles engraved for enhanced grip on stairs.
- 03 Self-cleaning lugs.

**SOLE IN DUAL-DENSITY POLYURETHANE WITH ENERGY ABSORPTION ON THE HEEL.**



CE EN ISO 20345:2022+A1:2024

- PS Puncture resistance (min. 1100 N & any single value >950 N) Non-metallic insert: tapered nail d=3,0 mm.
- SR Slip resistance - on ceramic tile floor with glycerine.

P. 100



# ARCTIC LINE

ARCTIC **S7S** SR FO CI HI SC

BTB0009BOK05..



**NEW**



**UPPER:**  
high-quality water-repellent suede, micro-injected inserts and special DRS WATER-RESISTANT membrane.

**LINING:**  
breathable micro-perforated 3D fabric.

**REMOVABLE INSOLE:**  
antistatic PU.

**ANTI-PERFORATION INSOLE:**  
zero-perforation textile fibre.

**TOE CAP:**  
non magnetic fibreglass, insulating, resistant to 200J.

**ANTI-SLIP ANTI-STATIC SOLE:**  
PU dual density with absorption of energy on the heel.

**SIZES:**  
36-47 (UK 3½-12).

Footwear designed for those who are forced to work in environments characterised by a high presence of water. Waterproof footwear are made with materials and techniques that prevent the entry of water guaranteeing excellent breathability together with a perfect hygrothermal comfort.

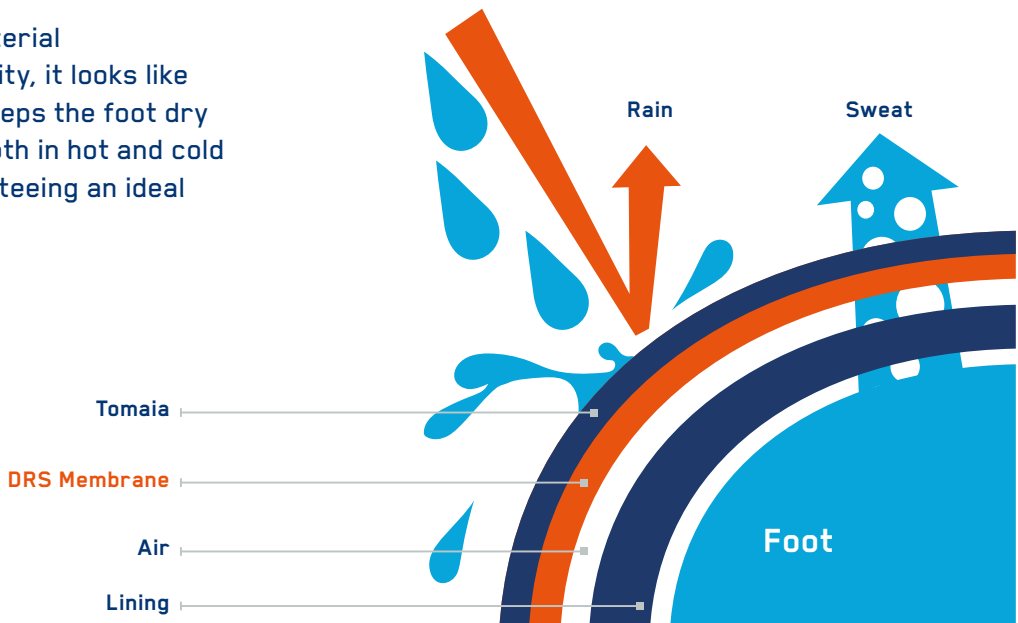
**WALK TEST** (according to EN ISO 20345:2022)  
1,000 steps (about 20 min.) in a tank containing 3 cm of water, the wet internal surface must be **< 3 cm²**.



## DRS MEMBRANE BY SPARCO TEAMWORK

**(DRY RESPIRATION SYSTEM):**  
The special **DRS** membrane by **SPARCO TEAMWORK** ensures maximum breathability and comfort while preventing water from penetrating into the upper, leaving the feet always dry and protected.

Made with a special material with microscopic porosity, it looks like an invisible sock that keeps the foot dry and thermally stable, both in hot and cold conditions, thus guaranteeing an ideal hygrothermal climate.





# NEW LINE S-PARK

RUNNING STYLE OCCUPATIONAL FOOTWEAR COMPLIANT TO THE NEW EN ISO 20347:2022+A1:2024. SEAMLESS SUPERLIGHT MESH UPPER, SOFT PHYLON MIDSOLE AND FO+HRO NITRILE RUBBER TREAD WITH HIGH ENERGY ABSORPTION. LIGHTWEIGHT AND BREATHABLE, THEY ARE SUITABLE FOR WORKING OR OUTDOOR LEISURE.



- 01 Self-cleaning profiles for the outflow of liquids.
- 02 Central studs with heel carving for maximum flexibility and grip.
- 03 Lamellar engraving for greater slip resistance.

SUPERLIGHT SOLE WITH PHYLON MIDSOLE AND HRO RUBBER TREAD. SUITABLE FOR ANY USE, EVEN FOR OUTDOOR LEISURE.



EN ISO 20347:2022+A1:2024

- SR Slip resistance - on ceramic tile floor with glycerine.
- HRO Contact Heat Resistance (300 °C. for 60").

P. 100

## LEON 01 SR FO HRO

BTB0007BON31..



NEW



**UPPER:**  
seamless superlight breathable mesh fabric  
**LINING:**  
breathable micro-perforated 3D fabric.  
**REMOVABLE INSOLE:**  
low-density antistatic PU with ergonomic thermoforming.  
**ANTI-PERFORATION INSOLE:**  
super comfortable PHYLON midsole, FO+HRO nitrile rubber tread with high energy absorption.  
**SIZES:**  
36-48 (UK 3½-13).

## SALOU 01 SR FO HRO

BTB0007BOE43..



NEW



**UPPER:**  
seamless superlight breathable mesh fabric  
**LINING:**  
breathable micro-perforated 3D fabric.  
**REMOVABLE INSOLE:**  
low-density antistatic PU with ergonomic thermoforming.  
**ANTI-PERFORATION INSOLE:**  
super comfortable PHYLON midsole, FO+HRO nitrile rubber tread with high energy absorption.  
**SIZES:**  
36-48 (UK 3½-13).

## GAP 01 SR FO HRO

BTB0007BOK05..



NEW



**UPPER:**  
seamless superlight breathable mesh fabric  
**LINING:**  
breathable micro-perforated 3D fabric.  
**REMOVABLE INSOLE:**  
low-density antistatic PU with ergonomic thermoforming.  
**ANTI-PERFORATION INSOLE:**  
super comfortable PHYLON midsole, FO+HRO nitrile rubber tread with high energy absorption.  
**SIZES:**  
36-48 (UK 3½-13).

## SEPANG 01 SR FO HRO

BTB0007BOK12..



NEW



**UPPER:**  
seamless superlight breathable mesh fabric  
**LINING:**  
breathable micro-perforated 3D fabric.  
**REMOVABLE INSOLE:**  
low-density antistatic PU with ergonomic thermoforming.  
**ANTI-PERFORATION INSOLE:**  
super comfortable PHYLON midsole, FO+HRO nitrile rubber tread with high energy absorption.  
**SIZES:**  
36-48 (UK 3½-13).





# NEW MARTINI RACING S-PARK

RUNNING STYLE OCCUPATIONAL FOOTWEAR WITH OFFICIAL MARTINI RACING LIVERY, COMPLIANT TO THE NEW **EN ISO 20347:2022+A1:2024**. SEAMLESS SUPERLIGHT MESH UPPER, SOFT PHYLON MIDSOLE AND FO+HRO NITRILE RUBBER TREAD WITH HIGH ENERGY ABSORPTION. LIGHTWEIGHT AND BREATHABLE, THEY ARE SUITABLE FOR WORKING OR LEISURE.



- 01** Self-cleaning profiles for the outflow of liquids.
- 02** Central studs with heel carving for maximum flexibility and grip.
- 03** Lamellar engraving for greater slip resistance.

**SUPERLIGHT SOLE WITH PHYLON MIDSOLE AND HRO RUBBER TREAD. SUITABLE FOR ANY USE, EVEN FOR OUTDOOR LEISURE.**



**CE EN ISO 20347:2022+A1:2024**

**SR** Slip resistance - on ceramic tile floor with glycerine.  
**HRO** Contact Heat Resistance (300 °C. for 60").

P. 100



**OFFICIAL LICENSED PRODUCTS**



# S-PARK MARTINI RACING



SARDINIA 01 SR FO HRO

BTB0008DON31..



**NEW**



**UPPER:**  
seamless superlight breathable mesh fabric

**LINING:**  
breathable micro-perforated 3D fabric.

**REMOVABLE INSOLE:**  
low-density antistatic PU with ergonomic thermoforming.

**ANTI-PERFORATION INSOLE:**  
super comfortable PHYLON midsole, FO+HRO nitrile rubber tread with high energy absorption.

**SIZES:**  
36-48 (UK 3½-13).

HOODIE REPLICA **MARTINI RACING**

01279MR..



**SPECIFICATIONS:**  
Hooded sweatshirt made of ultra-soft cotton blend featuring the iconic Martini Racing livery. The logo patches and stripes are fully embroidered.

**MATERIAL:**  
90% cotton, 10% polyester  
300 gr/m<sup>2</sup>  
hood lined in soft jersey

**SIZES:**  
XS-3XL

Visit  
[SPARCO-OFFICIAL.COM](https://www.sparco-official.com)





WORKWEAR





# WORKWEAR TECH SOFT-SHELL YORK

CE EN ISO 13688:2022

CAT.1

## TECH SOFT-SHELL

WEIGHT: 330 gr/m²

COMPOSITION: Outer 93% polyester, 7% spandex  
Inside 100% polyester (polar fleece)

SIZES: XS-3XL

### SPECIFICATIONS:

- Reinforcement inserts on shoulders and sleeves made of anti-abrasion material.
- High visibility reflective strips on the sleeves.
- Removable and foldable hood with double adjustment.
- Elasticated cuffs.
- COMPLIANT TO THE EN ISO 13688:2022 - CAT.1.

## TECH SOFT-SHELL YORK



YORK  
GREY/GREEN

02412GSVF..

NEW

SIZES: XS-3XL



YORK  
BLACK/ORANGE

02412NRAF..

SIZES: XS-3XL



YORK  
GREY/YELLOW

02412GSGF..

SIZES: XS-3XL



YORK  
NAVY/ORANGE

02412BMAF..

SIZES: XS-3XL



YORK  
BLACK/GREY

02412NRGS..

SIZES: XS-3XL



YORK  
NAVY/ROYAL

02412BMAZ..

SIZES: XS-3XL



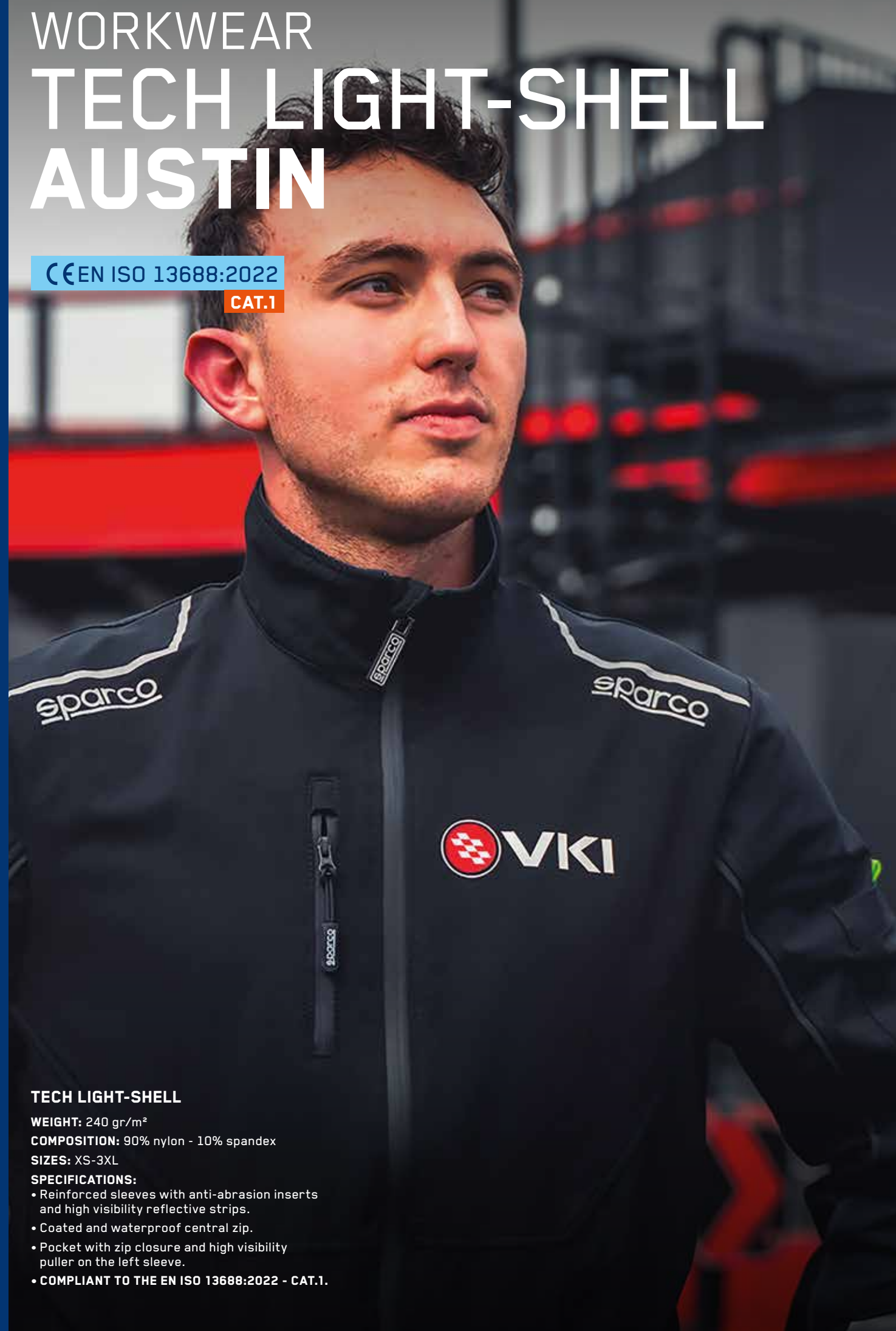




# WORKWEAR TECH LIGHT-SHELL AUSTIN

CE EN ISO 13688:2022

CAT.1



## TECH LIGHT-SHELL

WEIGHT: 240 gr/m<sup>2</sup>

COMPOSITION: 90% nylon - 10% spandex

SIZES: XS-3XL

### SPECIFICATIONS:

- Reinforced sleeves with anti-abrasion inserts and high visibility reflective strips.
- Coated and waterproof central zip.
- Pocket with zip closure and high visibility puller on the left sleeve.

• COMPLIANT TO THE EN ISO 13688:2022 - CAT.1.

## TECH LIGHT-SHELL AUSTIN



AUSTIN  
GREY/GREEN

02413GSVF..

NEW

SIZES: XS-3XL



AUSTIN  
BLACK/ORANGE

02413NRAF..

SIZES: XS-3XL



AUSTIN  
GREY/YELLOW

02413GSGF..

SIZES: XS-3XL



AUSTIN  
NAVY/ORANGE

02413BMAF..

SIZES: XS-3XL



AUSTIN  
BLACK/GREY

02413NRGS..

SIZES: XS-3XL



AUSTIN  
NAVY/ROYAL

02413BMAZ..

SIZES: XS-3XL







# WORKWEAR TECH HOODED FULL ZIP COLORADO

CE EN ISO 13688:2022

CAT.1

## TECH FULL ZIP SWEATSHIRT

WEIGHT: 280 gr/m<sup>2</sup>

COMPOSITION: 80% cotton - 20% polyester

SIZES: XS-3XL

### SPECIFICATIONS:

- Reinforced sleeves with anti-abrasion inserts and high visibility reflective strips.
- Reinforcement inserts on the shoulders.
- Integrated adjustable hood with colored lining.
- COMPLIANT TO THE EN ISO 13688:2022 - CAT.1.

## TECH HOODED FULL ZIP COLORADO



COLORADO  
GREY/GREEN

02414GSVF..

**NEW**

SIZES: XS-3XL



COLORADO  
BLACK/ORANGE

02414NRAF..

SIZES: XS-3XL



COLORADO  
GREY/YELLOW

02414GSGF..

SIZES: XS-3XL



COLORADO  
NAVY/ORANGE

02414BMAF..

SIZES: XS-3XL



COLORADO  
BLACK/GREY

02414NRGS..

SIZES: XS-3XL



COLORADO  
NAVY/ROYAL

02414BMAZ..

SIZES: XS-3XL







# WORKWEAR TECH FULL ZIP ALABAMA

CE EN ISO 13688:2022

CAT.1



## TECH FULL ZIP SWEATSHIRT

WEIGHT: 260 gr/m²

COMPOSITION: 80% cotton - 20% polyester

SIZES: XS-3XL

### SPECIFICATIONS:

- Reinforced sleeves with anti-abrasion inserts and high visibility reflective strips.
- Reinforcement inserts on the shoulders.
- Ultra-smooth central zipper.
- Side and sleeve pockets with reverse zip closure.
- COMPLIANT TO THE EN ISO 13688:2022 - CAT.1.

## TECH FULL ZIP ALABAMA

ALABAMA  
GREY/GREEN

02429GSVF..

NEW

SIZES: XS-3XL



ALABAMA  
BLACK/ORANGE

02429NRAF..

SIZES: XS-3XL



ALABAMA  
GREY/YELLOW

02429GSGF..

SIZES: XS-3XL



ALABAMA  
NAVY/ORANGE

02429BMAF..

SIZES: XS-3XL



ALABAMA  
BLACK/GREY

02429NRGS..

SIZES: XS-3XL



ALABAMA  
NAVY/ROYAL

02429BMAZ..

SIZES: XS-3XL



WORKWEAR





# WORKWEAR TECH LIGHT VEST ILLINOIS

CE EN ISO 13688:2022

CAT.1

## TECH LIGHT VEST

WEIGHT: 240 gr/m²

COMPOSITION: 90% nylon - 10% spandex

SIZES: XS-3XL

### SPECIFICATIONS:

- Reinforcement inserts on the shoulders made of anti-abrasion material.
- Coated and waterproof central zip.
- High visibility reflective strips on the back.
- COMPLIANT TO THE EN ISO 13688:2022 - CAT.1.

## TECH LIGHT VEST ILLINOIS



ILLINOIS  
GREY/GREEN

02419GSVF..

**NEW**



SIZES: XS-3XL

ILLINOIS  
BLACK/ORANGE

02419NRAF..



SIZES: XS-3XL

ILLINOIS  
GREY/YELLOW

02419GSGF..



SIZES: XS-3XL

ILLINOIS  
NAVY/ORANGE

02419BMAF..



SIZES: XS-3XL

ILLINOIS  
BLACK/GREY

02419NRGS..



SIZES: XS-3XL

ILLINOIS  
NAVY/ROYAL

02419BMAZ..



SIZES: XS-3XL





# WORKWEAR TECH POLO TOLEDO

CE EN ISO 13688:2022

CAT.1

## TECH POLO

WEIGHT: 180 gr/m<sup>2</sup>

COMPOSITION: 65% cotton,  
35% polyester with piqué effect

SIZES: XS-3XL

### SPECIFICATIONS:

- High visibility reflective sleeve strips.
- Contrasting inserts under sleeves and collar.
- Reinforced shoulder inserts.
- COMPLIANT TO THE EN ISO 13688:2022 - CAT.1.

## TECH POLO TOLEDO

TOLEDO  
GREY/GREEN

02415GSVF..

**NEW**

SIZES: XS-3XL



TOLEDO  
BLACK/ORANGE

02415NRAF..

SIZES: XS-3XL



TOLEDO  
GREY/YELLOW

02415GSGF..

SIZES: XS-3XL



TOLEDO  
NAVY/ORANGE

02415BMAF..

SIZES: XS-3XL



TOLEDO  
BLACK/GREY

02415NRGS..

SIZES: XS-3XL



TOLEDO  
NAVY/ROYAL

02415BMAZ..

SIZES: XS-3XL

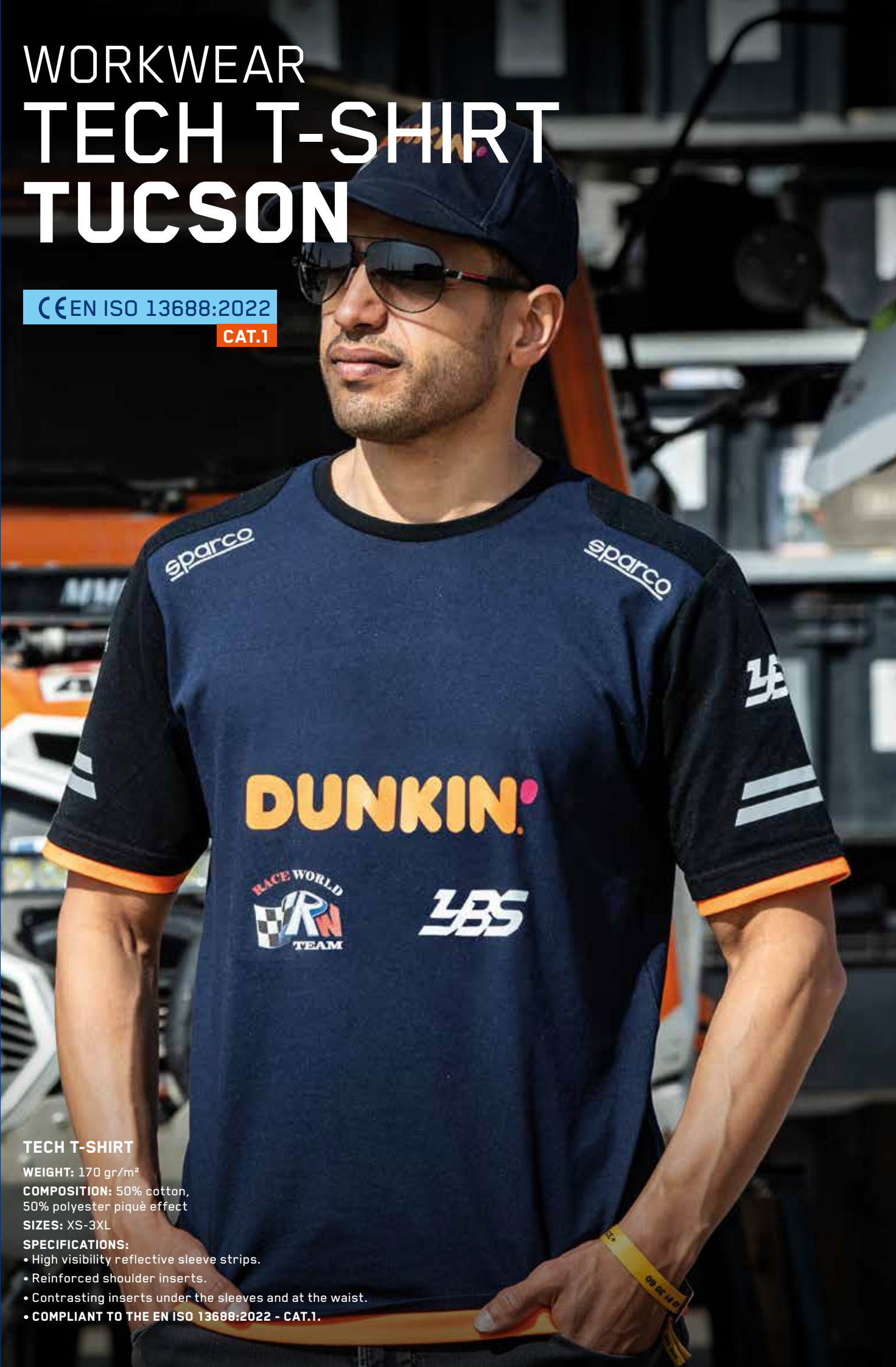






# WORKWEAR TECH T-SHIRT TUCSON

CE EN ISO 13688:2022  
CAT.1



## TECH T-SHIRT

- WEIGHT:** 170 gr/m<sup>2</sup>  
**COMPOSITION:** 50% cotton,  
50% polyester piqué effect  
**SIZES:** XS-3XL  
**SPECIFICATIONS:**
- High visibility reflective sleeve strips.
  - Reinforced shoulder inserts.
  - Contrasting inserts under the sleeves and at the waist.
  - COMPLIANT TO THE EN ISO 13688:2022 - CAT.1.

## TECH T-SHIRT TUCSON

TUCSON  
GREY/GREEN

02416GSVF..

NEW

SIZES: XS-3XL

TUCSON  
BLACK/ORANGE

02416NRAF..

SIZES: XS-3XL

TUCSON  
GREY/YELLOW

02416SGSF..

SIZES: XS-3XL

TUCSON  
NAVY/ORANGE

02416BMAF..

SIZES: XS-3XL

TUCSON  
BLACK/GREY

02416NRGS..

SIZES: XS-3XL

TUCSON  
NAVY/ROYAL

02416BMAZ..

SIZES: XS-3XL





# WORKWEAR TECH TROUSERS OREGON

CE EN ISO 13688:2022

CAT.1

sparco

## TECH TROUSERS

WEIGHT: 240 gr/m²

COMPOSITION: 90% nylon - 10% spandex

SIZES: XS-3XL

### SPECIFICATIONS:

- Anti-abrasion reinforcements on the knees.
- Zip and button closure.
- Hidden side pocket with zip closure.
- COMPLIANT TO THE EN ISO 13688:2022 - CAT.1.

## TECH TROUSERS OREGON

OREGON  
GREY/GREEN

02417GSVF..

NEW



SIZES: XS-3XL

OREGON  
BLACK/ORANGE

02417NRAF..



SIZES: XS-3XL

OREGON  
GREY/YELLOW

02417GSGF..



SIZES: XS-3XL

OREGON  
NAVY/ORANGE

02417BMAF..



SIZES: XS-3XL

OREGON  
BLACK/GREY

02417NRGS..



SIZES: XS-3XL

OREGON  
BLACK/ROYAL

02417NRAZ..



SIZES: XS-3XL







# WORKWEAR TECH LIGHT TROUSERS KANSAS

CE EN ISO 13688:2022  
CAT.1

**TECH LIGHT TROUSERS**  
**WEIGHT:** 170 gr/m²  
**COMPOSITION:** 90% nylon - 10% spandex  
**SIZES:** XS-3XL  
**SPECIFICATIONS:**  
• Anti-abrasion reinforcements on the knees.  
• Zip and button closure.  
• Hidden side pocket with zip closure.  
• COMPLIANT TO THE EN ISO 13688:2022 - CAT.1.

## TECH LIGHT TROUSERS KANSAS

KANSAS  
GREY/GREEN 02425GSVF..



KANSAS  
BLACK/ORANGE 02425NRAF..



KANSAS  
GREY/YELLOW 02425GSGF..



KANSAS  
NAVY/ORANGE 02425BMAF..



KANSAS  
BLACK/GREY 02425NRGS..



KANSAS  
BLACK/ROYAL 02425NRAZ..





# WORKWEAR TECH DENIM DALLAS

CE EN ISO 13688:2022

CAT.1



## TECH DENIM DALLAS

DALLAS

02430BS..

SIZES: XS-3XL



### TECH DENIM JEANS

**WEIGHT:** 240 gr/m<sup>2</sup>

**COMPOSITION:** 98% cotton - 2% spandex

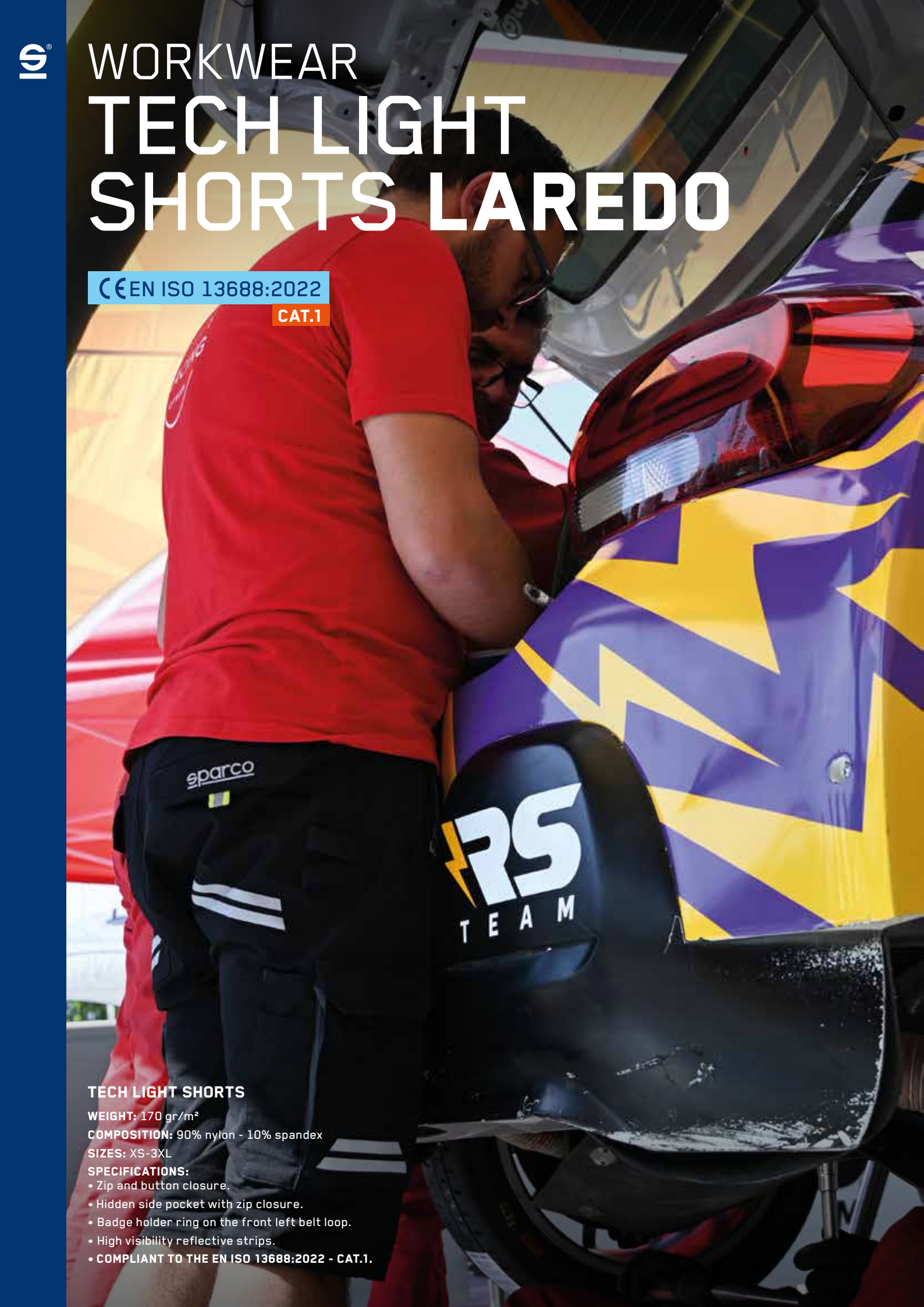
**SIZES:** XS-3XL

#### SPECIFICATIONS:

- Ergonomic construction to facilitate knee movement.
- Tool ring on side pocket.
- Elasticated waist.
- Embroidered details.
- COMPLIANT TO THE EN ISO 13688:2022 - CAT.1.







# WORKWEAR TECH LIGHT SHORTS LAREDO

CE EN ISO 13688:2022  
CAT.1

**TECH LIGHT SHORTS**  
**WEIGHT:** 170 gr/m<sup>2</sup>  
**COMPOSITION:** 90% nylon - 10% spandex  
**SIZES:** XS-3XL  
**SPECIFICATIONS:**  
• Zip and button closure.  
• Hidden side pocket with zip closure.  
• Badge holder ring on the front left belt loop.  
• High visibility reflective strips.  
• COMPLIANT TO THE EN ISO 13688:2022 - CAT.1.

## TECH LIGHT SHORTS LAREDO

LAREDO GREY/GREEN 02428GSVF..



LAREDO BLACK/ORANGE 02428NRAF..



LAREDO GREY/YELLOW 02428GSGF..



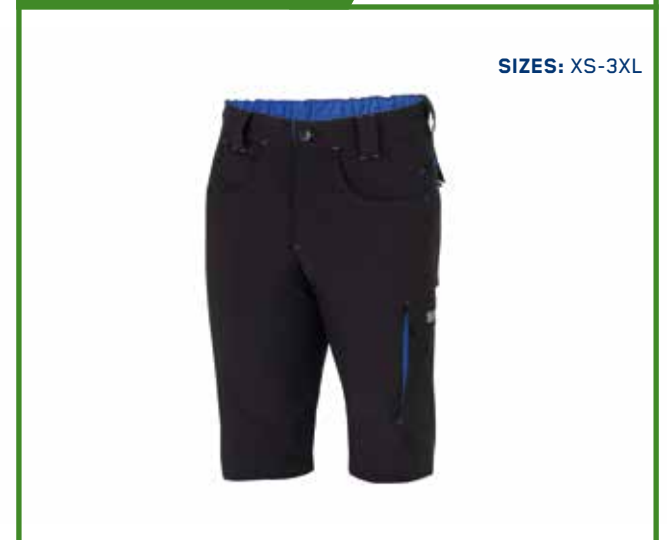
LAREDO NAVY/ORANGE 02428BMAF..



LAREDO BLACK/GREY 02428NRGS..



LAREDO BLACK/ROYAL 02428NRAZ..





VERMONT  
BLACK

BTP0001BOK11..

NEW

SIZES: XS-3XL



**CARGO TROUSERS  
WITH SIDE POCKETS.**

**WEIGHT:** 190 gr/m<sup>2</sup>

**COMPOSITION:** 60% cotton - 40% polyester

**SIZES:** XS-3XL

**SPECIFICATIONS:**

- Zip and button closure.
- Hidden internal side pocket with zip closure.
- **COMPLIANT TO EN ISO 13688:2022 - CAT.1.**

VERMONT  
BLUE NAVY/RED

BTP0001BON31..

NEW

SIZES: XS-3XL



**CARGO TROUSERS  
WITH SIDE POCKETS.**

**WEIGHT:** 190 gr/m<sup>2</sup>

**COMPOSITION:** 60% cotton - 40% polyester

**SIZES:** XS-3XL

**SPECIFICATIONS:**

- Zip and button closure.
- Hidden internal side pocket with zip closure.
- **COMPLIANT TO EN ISO 13688:2022 - CAT.1.**

WILSON  
BLUE ROYAL

02405AZ..

SIZES: S - 3XL



**WINDSTOPPER JACKET**

**WEIGHT:** 100 gr/m<sup>2</sup>

**COMPOSITION:** 100% polyester

**SIZES:** S-3XL

**SPECIFICATIONS:**

- Soft and lightweight water-repellent Polyester fabric.
- Coated zips with rubbered pullers.
- Elastic cuffs and hem.

WILSON  
BLUE NAVY

02405BM..

SIZES: S - 3XL



**WINDSTOPPER JACKET**

**WEIGHT:** 100 gr/m<sup>2</sup>

**COMPOSITION:** 100% polyester

**SIZES:** S-3XL

**SPECIFICATIONS:**

- Soft and lightweight water-repellent Polyester fabric.
- Coated zips with rubbered pullers.
- Elastic cuffs and hem.

HAWAII  
BLACK

BTP0002BOK11..

NEW

SIZES: XS-3XL



**CARGO BERMUDA  
WITH SIDE POCKETS.**

**WEIGHT:** 190 gr/m<sup>2</sup>

**COMPOSITION:** 60% cotton - 40% polyester

**SIZES:** XS-3XL

**SPECIFICATIONS:**

- Zip and button closure.
- Hidden internal side pocket with zip closure.
- **COMPLIANT TO EN ISO 13688:2022 - CAT.1.**

HAWAII  
BLUE NAVY/RED

BTP0002BON31..

NEW

SIZES: XS-3XL



**CARGO BERMUDA  
WITH SIDE POCKETS.**

**WEIGHT:** 190 gr/m<sup>2</sup>

**COMPOSITION:** 60% cotton - 40% polyester

**SIZES:** XS-3XL

**SPECIFICATIONS:**

- Zip and button closure.
- Hidden internal side pocket with zip closure.
- **COMPLIANT TO EN ISO 13688:2022 - CAT.1.**

WILSON  
BLACK

02405NR..

SIZES: S - 3XL



**WINDSTOPPER JACKET**

**WEIGHT:** 100 gr/m<sup>2</sup>

**COMPOSITION:** 100% polyester

**SIZES:** S-3XL

**SPECIFICATIONS:**

- Soft and lightweight water-repellent Polyester fabric.
- Coated zips with rubbered pullers.
- Elastic cuffs and hem.







# WORK GLOVES





# WORK GLOVES

## MECA III



## MECA III

MECA III  
BLUE/ORANGE

002093..BMAF



### WORK GLOVES

#### COMPOSITION:

47% polyester, 35% suede, 18% elastane

#### SIZES:

S-XL

#### SPECIFICATIONS:

abrasion-resistant synthetic leather palm.  
Reinforcements between thumb and index finger.  
Back made of abrasion-resistant printed stretch fabric.  
Fastening strap to adjust fit.

MECA III  
BLUE

002093..AZ



MECA III  
RED

002093..RS



MECA III  
BLACK/YELLOW

002093..NRGF



MECA III  
BLACK

002093..NR





# POP TOOLS

sparco  Teamwork

sparco  
Teamwork

sparco  
Teamwork

UN FUTURO  
CALZADO DE SEC

SPARCOTEA

sparco  
Teamwork

sparco  
Teamwork

sparco  
Teamwork

sparco  
Teamwork

sparco  
Teamwork

sparco  
Teamwork

sparco  
Teamwork

sparco  
Teamwork

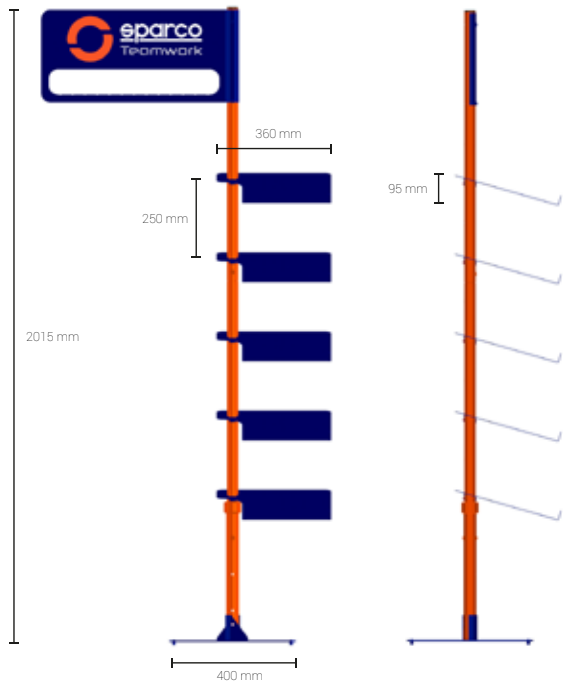
sparco  
Teamwork

SEGURIDAD EN FI  
VEN EL TRABAJO





**FLOOR DISPLAY** BAT0002B0B3000N



**FLOOR DISPLAY**  
FLOOR DISPLAY FOR SHOES AND CLOTHING. COMPLETELY ADJUSTABLE AND ADAPTABLE TO ANY ENVIRONMENT AND HEIGHT, IT IS MADE OF SOLID POWDER-COATED METAL. BASE WITH WELDED REINFORCEMENT AND RUBBER FEET. SUITABLE FOR DISPLAYING 5 PAIRS OF SHOES AND UP TO 13 ITEMS OF CLOTHING. COMES COMPLETE WITH A KIT OF 10 SPARCO® CUSTOM HANGERS (COD. 099108NR10).

**LANYARD** 099104AZAF

099104AZAF10 (KIT OF 10)



**TEAMWORK KEYCHAIN** 099092TEAMWORK



**HANGER** 099108NR10

KIT OF 10 CUSTOMIZED SPARCO® HANGERS



**GYMKHANA KEYCHAIN** 099092GKHANA



**IMPULSE PLEXI DISPLAY**

BAT0003B000000N

**NEW**

H 46 X L 32 X P 30 CM



**IMPULSE PLEXI DISPLAY - 1 PAIR**  
TRANSPARENT PMMA COUNTER DISPLAY.

**SHELF HIGHLIGHTER**

0750011

H 17 X L 30 X P 17,5 CM



LIGHT AND DURABLE MATERIAL, SUITABLE TO SHOW 1 SHOE. 5-PIECE SET.

**COUNTER DISPLAY**

0750010

H 31 X L 38 X P 28 CM



SHAPED LIKE A PEDAL SET, WITH AN UNMISTAKABLE RACING STYLE. LIGHT AND DURABLE MATERIAL, SUITABLE TO SHOW 1 PAIR OF SHOES.

**TEAMWORK FLOOR MAT** BAT0004B000000N

**NEW**

H 100 X L 60 CM







OUTLET

sparco

GYMKHANA

ECO

OUTLET



GYMKHANA

SIZES: 36-48

LANDO  
S1P SRC



07527..AZBM



CHESTER  
ESD S3S SR FO HRO



07535..GSVF



TACOMA  
ESD S3S SR FO HRO



07535..BMRS



INDY

SIZES: 35-48

EDMONTON  
ESD S1PS SR FO LG



07539..TAGI



CHARLOTTE  
ESD S3S SR FO LG



07537..GSAZ



CUP

SIZES: 35-46

NURBURG  
ESD S1P SRC



07526..NRGF



RICARD  
ESD S1P SRC



07526..NRAZ



ALBERT  
ESD S1P SRC



07526..NRRS



CHALLENGE-H

SIZES: 36-48

ZELTWEG  
ESD S3 SRC



07524..NRNR



TORQUE

SIZES: 37-47

PALMA  
01 FO SRA



001289..NRNR



DURANGO  
01 FO SRA



001289..NRAZ



ALGARVE  
01 SRA



001289..NRRS



SOFT-SHELL  
SEATTLE

SIZES: S-3XL



02404BM..

T-SHIRT  
TRENTON

SIZES: XL-3XL



02408AZ..

POLO PORTLAND

SIZES: S-3XL



02407BM..



02407AZ..



02407NR..

TECH SHORTS ATLANTA

SIZES: XS-3XL



02418BMAF..



02418NRAZ..



02418NRAF..



# CERTIFICATIONS AND CE STANDARDS

SPARCO TEAMWORK footwear are manufactured using both synthetic and natural materials that comply with the relevant sections of the EN ISO 20345:2022 / EN ISO 20345:2022+A1:2024 / EN ISO 20347:2022+A1:2024 standards for performance and quality. SPARCO TEAMWORK safety footwear are designed to minimise the risk of injury that could be inflicted on the wearer during use. They must be used in conjunction with a safe working environment and do not completely prevent injury if an incident that exceeds the test limits of the EN ISO 20345:2022 / EN ISO 20345:2022+A1:2024 / EN ISO 20347:2022+A1:2024 standards occurs.

### GUIDE TO STANDARDS:

- EN ISO 20344:2021 Test methodology and general requirements.
- EN ISO 20345:2022 / 20345:2022+A1:2024 Specifications for safety footwear with toe cap resistance to 200 J.
- EN ISO 20347:2022 / 20347:2022+A1:2024 Specifications for “occupational” or “professional” footwear (no specific toe cap resistance).

### SAFETY FOOTWEAR COMPLIANT WITH EN ISO 20345:2022 / 20345:2022+A1:2024

Sparco Teamwork footwear compliant with EN ISO 20345:2022 / EN ISO 20345:2022+A1:2024 protect the wearer’s toes from the risk of injury due to falling objects and crushing when worn in industrial and commercial environments where potential hazards exist.

- The impact protection provided is 200 Joules.
- The compression protection provided is 15,000 Newtons.

Category	Class	Additional requirements
SB	I o II	Safety basic requirements
S1	I	SB + Closed heel area + Antistatic property + Energy absorption of seat region
S2	I	S1+ Upper water penetration and absorption
S3 (metal insert type P) or S3L (non-metal insert type PL) or S3S (non-metal insert type PS)	I	S2 + perforation resistance according to the type + cleated outsole
S4	II	SB + Closed heel area + Antistatic property + Energy absorption of seat region
S5 (metal insert type P) or S5L (non-metal insert type PL) or S5S (non-metal insert type PS)	II	S4 + perforation resistance according to the type cleated outsole
S6	I	S2 + water resistance of the whole footwear
S7 (metal insert type P) or S7L (non-metal insert type PL) or S7S (non-metal insert type PS)	I	S3 + water resistance of the whole footwear
Class I: Footwear made of leather and other materials, excluding all-rubber or all-polymeric footwear		
Class II: All-polymeric (i.e. entirely moulded) including all-rubber (i.e. entirely vulcanized) footwear		

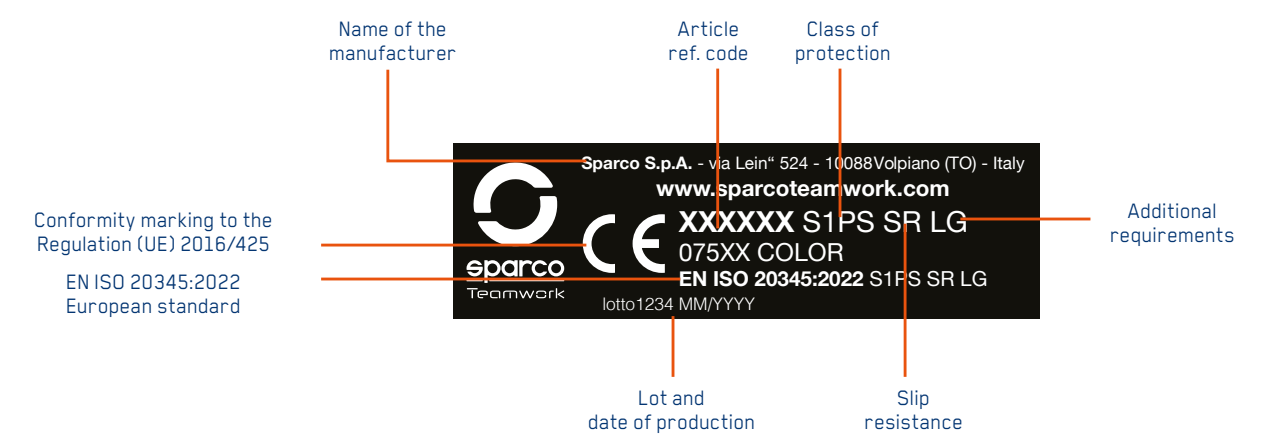
### OCCUPATIONAL FOOTWEAR COMPLIANT WITH EN ISO 20347:2022 / 20347:2022+A1:2024:

Footwear compliant with EN ISO 20347:2022 / 20347:2022+A1:2024 are called “occupational footwear” or “professional footwear” and do not require any specific toe cap resistance.

Category	Class	Additional requirements
O0	I	
O1	I	As O0, plus + Closed heel area + Energy absorption at the heel region + Antistatic
O2	I	As O1 + Penetration and absorption of water in the upper part
O3 (Metal insert type P) or O3L (non-Metal insert type PL) or O3S (non-Metal insert type PS)	I	As O2 + Puncture resistance by type + Studded sole
O4	II	As O0, + Closed heel area + Energy absorption in the heel region + Antistatic
O5 (Inserto Metallico tipo P) o O5L (Inserto non-Metallico tipo PL) o O5S (Inserto non-Metallico tipo PS)	II	As O4 + Puncture resistance by type + Studded solei
O6	I	As O2 + Water penetration into the entire shoe
O7 (Inserto Metallico tipo P) o O5L (Inserto non-Metallico tipo PL) o O5S (Inserto non-Metallico tipo PS)	I	As O3 + Water penetration resistance of the whole shoe
NOTE 1: To facilitate marking, this table classifies work footwear with the most common combinations of basic and additional requirements.		
NOTE 2: If the footwear has not been tested according to the slip resistance requirements, it is marked with the symbol “Ø”.		
ØBH: Hybrid footwear.		

### PRODUCT MARKING

Marking on footwear denotes that the footwear is licensed according to the PPE regulation and is as follows:





# CERTIFICATIONS AND CE STANDARDS

## ADDITIONAL PROTECTIONS: THE ADDITIONAL REQUIREMENTS

Additional protections may be provided, identified on the product by the following markings:

	Marking code
Perforation resistance	
Perforation resistance (min.1100 N) metal insert : d=4.5mm Conical Nail	P
Perforation resistance (min.1100 N) non-metal insert :d=4.5mm Conical Nail	PL
Perforation resistance (min.1100 N & each single value >950 N) non-metal insert: d=3.0mm Conical Nail	PS
Electrical properties	
Partially Conductive (maximum resistance 100 k Ω)	C
Antistatic (resistance range of 100 k Ω to 1000 MΩ)	A
Resistance to inimical environments:	
Heat Insulation of sole complex	HI
Cold Insulation of sole complex	CI
Energy absorption of seat region (20 Joules)	E
Water resistance	WR
Metatarsal protection	M
Ankle protection	AN
Cut resistant	CR
Scuff Cap abrasion	SC
Slip resistance - on ceramic tile floor with glycerine	SR
Upper	
Water penetration and water absorption	WPA
Outsole	
Resistance to hot contact	HRO
Resistance to fuel oil	FO
Ladder grip	LG

## PERFORATION RESISTANCE

In Sparco Teamwork footwear, non-metal perforation-resistance insert is used.

The perforation resistance of this footwear has been measured in the laboratory using standardized nails and forces. Nails of smaller diameter and higher static or dynamic loads will increase the risk of perforation occurring. In such circumstances, additional preventative measures should be considered. Three generic types of perforation resistant inserts are currently available in PPE footwear. These are metal types and those from non-metal materials, which shall be chosen on basis of a job-related risk assessment. All types give protection against perforation risks, but each has different additional advantages or disadvantages including the following:

- Metal (e.g. S1P, S3): Is less affected by the shape of the sharp object/hazard (i.e. diameter, geometry, sharpness) but due to shoemaking techniques may not cover the entire lower area of the foot.
- Non-metal (PS or PL or category e.g. S1PS, S3L): May be lighter, more flexible and provide greater coverage area, but the perforation resistance may vary more depending on the shape of the sharp object/hazard (i.e. diameter, geometry, sharpness). Two types in terms of the protection afforded are available. Type PS may offer more appropriate protection from smaller diameter objects than type PL.

## SLIP RESISTANCE

For footwear successfully tested against EN ISO 20345:2022 slip resistance, the following marking symbol apply:

- Basic requirement of slip resistance: Ceramic tile with sodium lauryl sulphate, no symbol.
  - Additional requirement of slip resistance: Ceramic tile with glycerol, symbol SR.
  - The footwear is not tested against slip resistance requirement, it is marked with symbol "Ø".
- Note: Slippage may still occur in certain environments.

## CE DECLARATION OF CONFORMITY

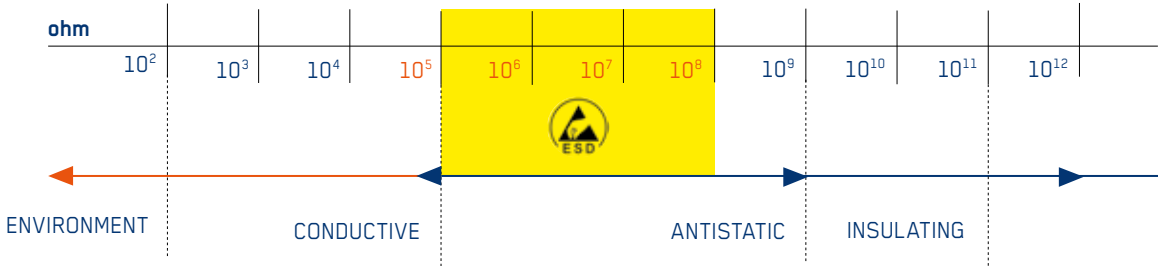
For Declaration of conformity, please refer to website: [www.sparcoteamwork.com](http://www.sparcoteamwork.com).

## ESD CEI EN 61340-5-1 2016 | COR 1:2017 STANDARD

The abbreviation ESD (ElectroStaticDischarge) indicates a discharge of static energy that passes from one body to another. In hazardous workplaces, ESD discharges can be the cause of even serious accidents (starting a fire), and can damage machinery and their sensitive components. ESD shoes are required for:

- Work with microchips
- Production of sensitive electrical parts
- Painting
- Working in contact with flammable liquids and gases

Sparco Teamwork ESD footwear comply with the regulation of the EN IEC 61340-5-1:2024 and have been certified according to EN IEC 61340-4-3:2018.



## COMPLIANCE WITH THE REACH REGULATION

The company complies with the REACH Regulation (EC) no. 1907/2006 in force since 1 June 2007, ensuring that the products used and supplied by SPARCO TEAMWORK:

- do not contain SVHC (Substance of Very High Concern) substances;
- do not contain substances that are on the list in Annex XIV\_ of the REACH Regulation;
- do not contain substances that are on the constantly updated Candidate List;
- do not contain substances subject to restrictions (Annex XVII of REACH) that the relative restrictions of use are observed.

Furthermore, in the event that an article contains an SVHC (Substance of Very High Concern) substance or one on the Candidate List in concentrations higher than 0.1% weight/weight, sufficient information is provided with the name of the substance and instructions helpful for the safe use of the article (see Article 59.1 of REACH).



INDEX

SAFETY SHOES

ACROPOLIS	P. 43	MILTON	P. 17
ARCTIC	P. 55	MONTECARLO	P. 45
ARTURO	P. 48	MORENO	P. 46
ASAN	P. 19	MOTEGI	P. 39
BAKU	P. 40	NELSON	P. 32
BALTIMORA	P. 26	NIGEL	P. 31
CHRIS	P. 15	NINO	P. 50
COLTON	P. 23	OKAYAMA	P. 41
CONOR	P. 24	OLYMPUS	P. 43
CORSICA	P. 17	OSCAR	P. 25
DANI	P. 42	PATO	P. 21
DANICA	P. 27	PAUL	P. 49
DELL	P. 53	PETTER	P. 35
DETROIT	P. 23	RANGER	P. 29
DIDIER	P. 35	RED BULL	P. 45
FARGO	P. 47	RICHMOND	P. 27
FELIX	P. 22	RIVER	P. 53
FORESTER	P. 28	ROC	P. 40
FUJI	P. 19	SALOU	P. 57
GAP	P. 56	SANDRO	P. 48
GEORGE	P. 15	SANREMO	P. 26
GREGOR	P. 24	SANYO	P. 18
HANNU	P. 36	SARDINIA	P. 59
JODY	P. 32	SEB	P. 42
JOS	P. 32	SEPANG	P. 57
JURI	P. 25	SOCHI	P. 38
KEKE	P. 30	SONOMA	P. 20
KEYNES	P. 17	STIRIA	P. 40
LEAP	P. 41	STONE	P. 41
LEON	P. 56	SUZUKA	P. 18
LINFORD	P. 13	TEXAS	P. 22
LUCAS	P. 15	VALLEY	P. 53
LUTON	P. 13	VIC	P. 51
MARCUS	P. 35	WILLEN	P. 13
MARTINI	P. 45	WILLY	P. 49
MIKKO	P. 37		

WORKWEAR

ALABAMA TECH FULL ZIP	P. 69
AUSTIN TECH LIGHT-SHELL	P. 65
COLORADO TECH HOODED FULL ZIP	P. 67
DALLAS TECH DENIM	P. 81
HAWAII CARGO BERMUDA SHORTS	P. 84
ILLINOIS TECH LIGHT VEST	P. 71
KANSAS TECH LIGHT TROUSERS	P. 79
LAREDO TECH LIGHT SHORTS	P. 83
OREGON TECH TROUSERS	P. 77
TOLEDO TECH POLO	P. 73
TUCSON TECH T-SHIRT	P. 75
VERMONT CARGO TROUSERS	P. 84
WILSON WINDSTOPPER	P. 85
YORK TECH SOFT-SHELL	P. 63

WORK GLOVES

MECA III WORK GLOVES	P. 89
----------------------	-------

POP TOOLS

COUNTER DISPLAY	P. 93
DISPLAY	P. 92
DISPLAY PLEXI IMPULSE	P. 92
HANGER	P. 93
LANYARD	P. 93
GYMKHANA KEYCHAIN	P. 93
TEAMWORK KEYCHAIN	P. 93
SHELF HIGHLIGHTER	P. 93
TEAMWORK FLOOR MAT	P. 93

The data and characteristics indicated in this catalogue are subject to changes without prior notice.  
The photographic reproduction of the shades of colour may not be perfectly faithful to reality.

In order to constantly improve the collections, the products contained in this catalogue could be replaced or modified.  
The photos contained are purely illustrative and not binding.





sparco  
Teamwork

THE POWER OF PERFORMANCE



# Kontaktujte nás

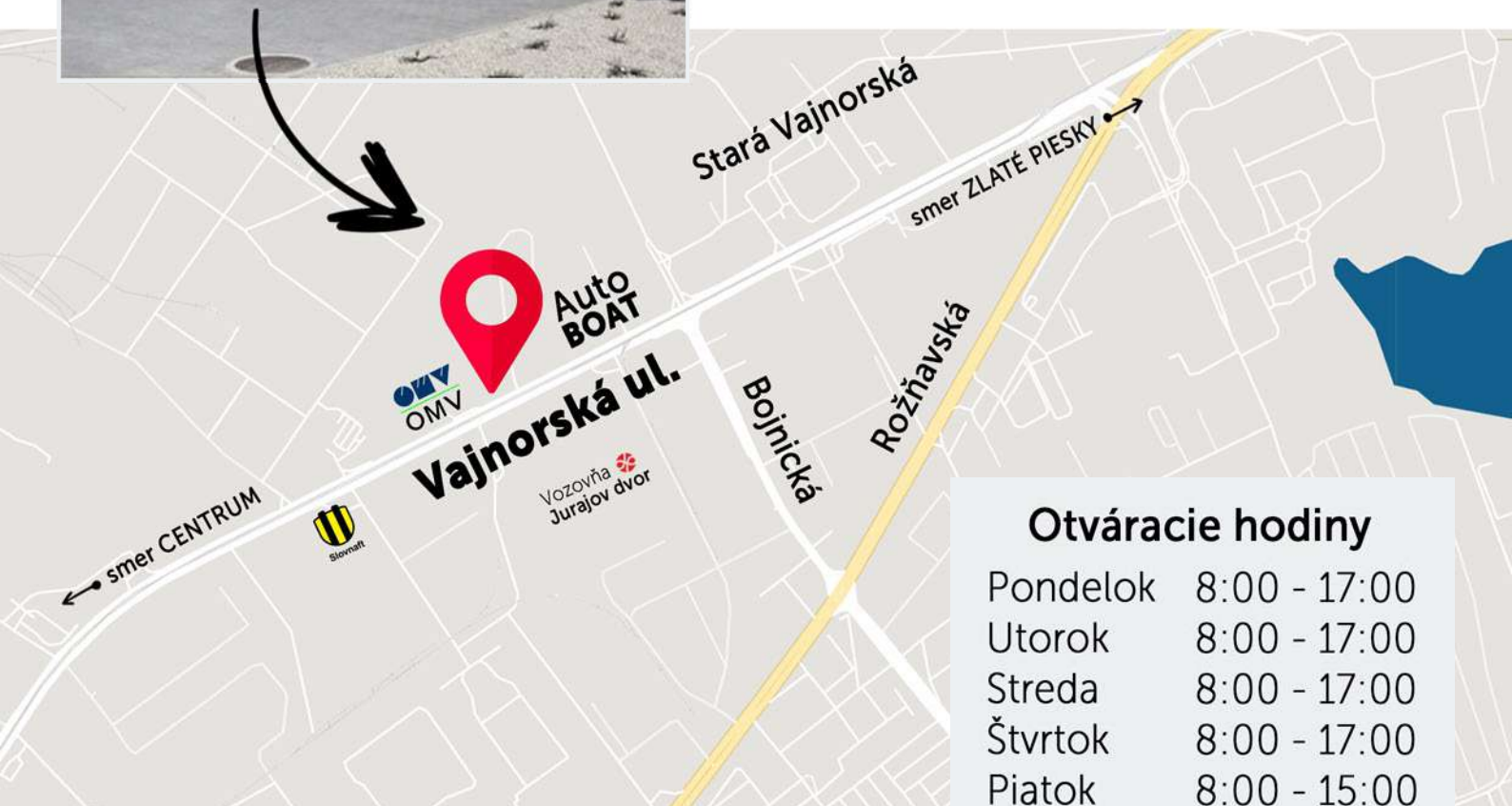
## CENTRÁLA

### Predajňa / Sklad

Vajnorská 131/A,  
Bratislava 831 04



tel.: 02/44458685  
tel/fax: 02/44458684  
e-mail: [lubica@lubica.eu](mailto:lubica@lubica.eu)  
web: [www.lubica.sk](http://www.lubica.sk)



### Otváracie hodiny

Pondelok	8:00 - 17:00
Utorok	8:00 - 17:00
Streda	8:00 - 17:00
Štvrtok	8:00 - 17:00
Piatok	8:00 - 15:00
Sobota	Zatvorené
Nedeľa	Zatvorené



Viac informácií o produktoch **nájdete na** [www.lubica.sk](http://www.lubica.sk)